

ExtremeZ-IP File Server Home Directory Support

Overview

This article describes the process for enabling the ExtremeZ-IP home directory support feature. This feature allows volumes to be designated as home directory volumes, presenting the user with a filtered view of the volume that shows only their assigned home directory folder.

Only ExtremeZ-IP server-side configuration is detailed in this article. If necessary for your environment, support for network home directories will also need to be configured on your Macintosh client computers. This process is detailed in the knowledge base article “Creating Active Directory Integrated Home Directories” available at:

<http://www.grouplogic.com/knowledge/index.cfm?fuseaction=view&docID=167>

Home Directory Support Details

ExtremeZ-IP File Server 4.2 allows volumes to be created that act as filtered user home directories. When a volume is designated as a home directory volume, a user will only be given the option to mount the volume if it contains their individual home directory. When browsing that volume, the user will only see their home directory folder. All other folders on the volume will be hidden.

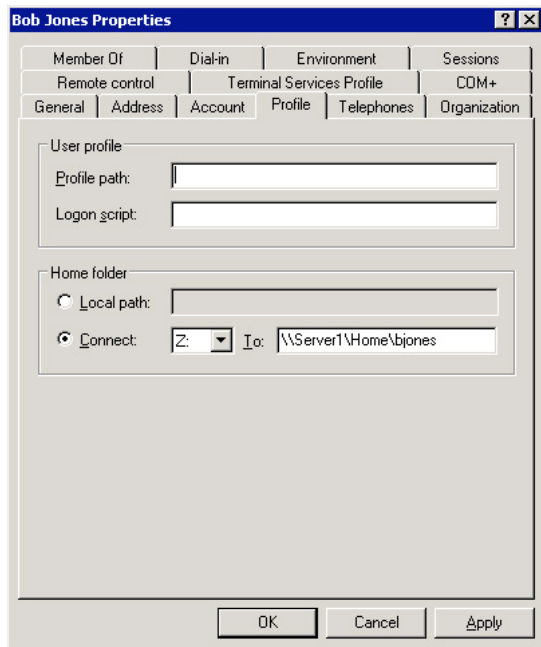
Client Macs that are configured to use an ExtremeZ-IP network based home directory will continue to function properly, regardless of whether the ExtremeZ-IP server’s home directory support is enabled or disabled. If the server’s home directory feature is disabled, the user will simply be presented with the entire contents of the volume rather than a filtered view.

Home Directory Support Setup

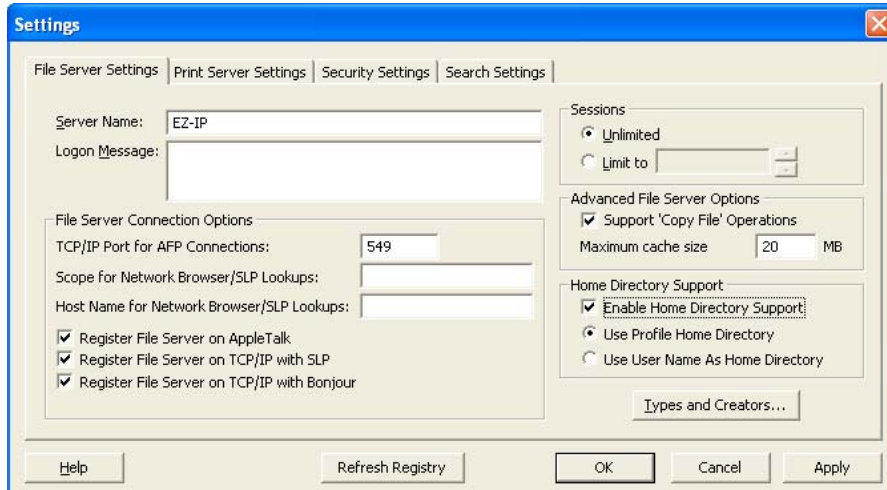
To enable the home directory feature on your ExtremeZ-IP File Server, check the **Enable Home Directory Support** option, found in the **Settings** dialog of the ExtremeZ-IP Administrator. You will configure specific volumes on the server as home directory volumes in the next step.

Additionally, you must choose the type of home directory support you would like:

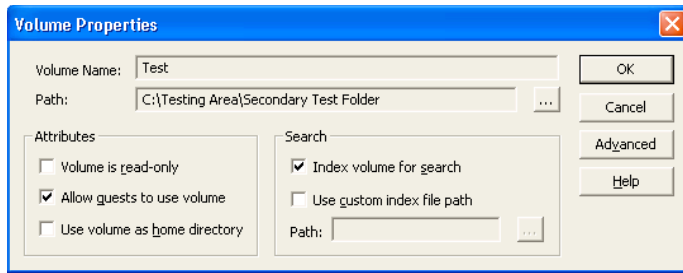
Use Profile Home Directory – This option assigns a user’s home directory based on the **Home folder** path specified in their Active Directory account profile. The profile home directory option will use the path specified in the **Connect** option of the **Home folder** configuration, shown below. The drive letter assigned in the profile does not apply to Mac home directories.



Use User Name as Home Directory – This option assigns a user’s home directory based on their user name. If the volume being mounted is a home directory volume and contains a directory with a name matching the user’s user name, that directory will be assigned as their home directory.



To configure an individual volume as a home directory, simply create a new volume or select an existing volume in the **Volumes** dialog of ExtremeZ-IP Administrator and choose **Modify**. On the **Volume Properties** dialog, check the **Use volume as home directory** option.



After completing these steps, home directory support will be active on your server.