

# MassTransit WMI Support

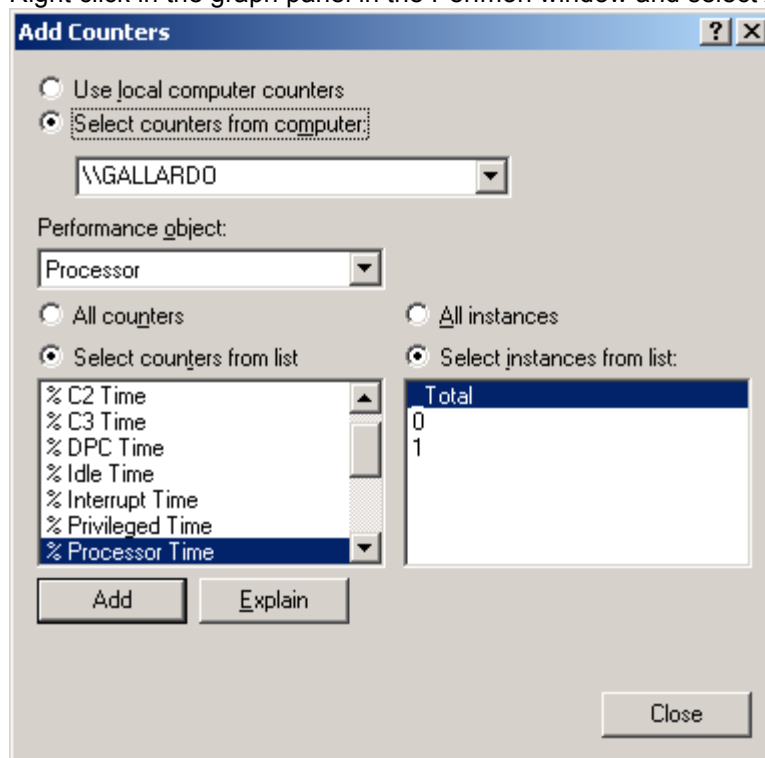
Group Logic, Inc.  
November 7, 2008

MassTransit 6.0 supports the standard Windows Management Instrumentation (WMI) interface that allows system administrators to monitor MassTransit servers in production environments as well as diagnose problems.

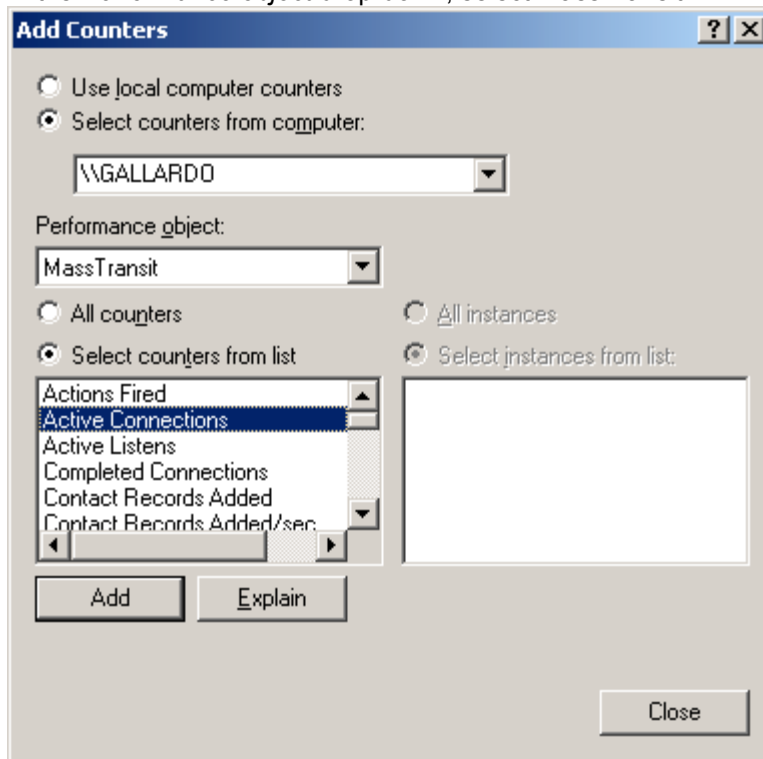
MassTransit 6.0 exposes key data points that reflect its state and performance as performance counters that could be monitored or recorded using standard WMI enabled system management tools, such as the Perfmon utility. This feature is only available on Windows for MassTransit Professional and Enterprise servers.

To add MassTransit performance counters to the set of counters monitored in Perfmon:

1. Right click in the graph panel in the Perfmon window and select *Add Counters...*



2. In the *Performance object* drop-down, select MassTransit



3. Select individual counters on the list (or click on the *All counters* radio button if adding all counters exposed by MassTransit) and click the *Add* button
4. Click the *Close* button when done

No additional configurations steps or procedures are required.

The following counters are currently provided by MassTransit:

- **Active Connections** – a 32-bit counter that includes presently open TCP, TCP/Secure, FTP and Hot Folder connections.
- **Maximum Active Connections** – same as **Active Connections**, but a “maximum” counter (i.e. never decremented)
- **Completed Connections** – accounts for connections as defined in Active Connections that have been completed.
- **Total Listens** – accounts for all currently defined listens as they are displayed in the status window in the UI.
- **Active Listens** – accounts for listens that are currently listening (FTP client and Hot Folder listens remain active when they are polling).
- **Bytes Transmitted** – represents the total size, in bytes, of all files that have been sent or forwarded (i.e. put in the respective status).
- **Bytes Transmitted / sec** – same as **Bytes Transmitted** but over time.
- **Bytes Received** – represents the total size, in bytes, of all files that have been received (i.e. put into the “received” status).
- **Bytes Received / sec** – same as **Bytes Received** but over time.
- **Files Sent** – accounts for files that are being put into the “sent” status (for files sent to groups, this counter is incremented for the group members as well as the group contact itself). The Files Sent counter only updates after the file transfer session disconnects. If a user is using a remote FTP Client to log into MassTransit as an FTP Server, the counter will not update until the user logs off from the FTP Server.

- **Files Received** – accounts for files that are put into the “received” status (this includes files that are being forwarded after they are received). The Files Received counter only updates after the file transfer session disconnects. If a user is using a remote FTP Client to log into MassTransit as an FTP Server, the counter will not update until the user logs off from the FTP Server.
- **SOAP Requests** – how often the MT engine makes a SOAP request.
- **SOAP Requests / sec** – same as **SOAP Requests** but over time.
- **Errors** – number of errors reported by MassTransit.
- **User Logins** – web and application successful logins.
- **Failed User Logins** – accounts for all failed logins (due to the way authentication is currently implemented in MassTransit / MTWeb (multiple authenticators that fall back on each other) this counter might get incremented for what would eventually be a successful login; however, those situations will also result in errors / warnings being logged, etc.; as soon as that original problem is addressed, this counter will reflect failed logins more accurately).
- **Actions Fired** – accounts for executed action tasks (e.g. e-mail being sent, script being executed, etc.).
- **SQL Commands** – number of SQL commands executed by the MassTransit engine. SQL Commands counters will only count SQL commands triggered by the engine, not the MT Administrator or Web Client log viewer.
- **SQL Commands / sec** – same as **SQL Commands** but over time.
- **Log Records Added** – total log records added (includes log records added via scripting interfaces).
- **Log Records Added / sec** – **Log Records Added** but over time.
- **File Records Added** – # of files added to the system. File records added by dragging them to MT Administrator UI will not increment File Records Added counters.
- **File Records Added / sec** – same as **File Records Added** but over time.
- **Contact Records Added** – # of contact records added to the system. Note: Contact Records Added counters will not increment for contacts added through MT Administrator UI, only through a script interface.
- **Contact Records Added / sec** – same as **Contact Records Added** but over time.

Note: Perfmon's fastest refresh time is 1 second, therefore some counters will not increment if an event occurs in less than 1 second. Example, Connect and Disconnect with no file transfer may occur fast enough to not register on Active Connections counter (but will be counted under Completed Connections counter).