

ExtremeZ-IP File Quick Start Guide

This guide provides the essential steps for installing ExtremeZ-IP®. For detailed File and Print configuration instructions, see the ExtremeZ-IP Users Manual PDF included with the ExtremeZ-IP download installer or CD. After installation, find this file in your ExtremeZ-IP program folder: `C:\Program Files\Group Logic\ExtremeZ-IP\ExtremeZ-IP Manual.pdf`. The combined installer for ExtremeZ-IP allows you to install any components you have purchased—ExtremeZ-IP File Server, Print Server, and Print Accounting Add-on—using the one setup wizard

Before installing, read these notes.

- **Installing ExtremeZ-IP for a cluster** This guide includes instructions on installing the standard version of ExtremeZ-IP. If you are performing a cluster installation please refer to: <http://www.grouplogic.com/knowledge/index.cfm/fuseaction/view/docID/146>
- **Installing when you have a preexisting ExtremeZ-IP File Server** If you install the Print Server or Print Accounting Add-on on a server that has a preexisting File Server installation, your File Server license is reset to the stand-alone Print Server limit of three (3) simultaneous users. To prevent this, reinstall the File Server at the same time you install any Print installations. Then, during the installation process, you are prompted for all relevant serial numbers and the appropriate user limits are set. Any previous file server volumes and settings are preserved.
- **Stopping the ExtremeZ-IP Service while reinstalling** For reinstallations and upgrade installations, the ExtremeZ-IP installer can stop the ExtremeZ-IP Service to perform the new install. However, in some cases the installation could fail because the ExtremeZ-IP Service cannot be stopped; these include infrequent but possible service errors, conflicts with other running processes, or conflicts caused by installing while the Services Control Panel is open. If you experience installation failures, stop the ExtremeZ-IP Service manually.
- * **ExtremeZ-IP and SFM** If you are installing a trial version of ExtremeZ-IP on a server also running Services for Macintosh®, the ExtremeZ-IP service will run on port 549 instead of the default AFP port 548. Services for Macintosh will remain running on port 548 allowing you to attach using both services. To connect to the ExtremeZ-IP service from a client, add ":549" after the server IP address or DNS name (ex. 192.168.1.1:549)
- * **Required Windows® file permissions for shared volumes** ExtremeZ-IP relies on the SYSTEM account on its Windows server to perform many of its core functions. For this reason, any folder hierarchy that is shared as a volume with ExtremeZ-IP requires that the SYSTEM account has "Full Control" access to the entire folder hierarchy. This is a default permission for the Windows OS partition but any additional disks or partitions containing ExtremeZ-IP volumes must have SYSTEM = "Full Control" set to allow ExtremeZ-IP to function properly. Please verify that all the volumes you share have this permission set.
- * **A note on sharing the root of a drive** Since Windows treats permissions at the root of the file system differently than other folders, we recommend that you do not share out drive letters directly, but create a sub-folder for your shared volume instead.

INSTALLING EXTREMEZ-IP

You must be logged into Windows with Administrator privileges to install ExtremeZ-IP. To install one or more ExtremeZ-IP components, follow the steps in "The Installation Procedure" below. However, if you are upgrading a previous ExtremeZ-IP installation, first follow steps 1-3 below to stop the ExtremeZ-IP Service.

1. If you have another version of ExtremeZ-IP installed, from the Start menu, go to All Programs > Administrative Tools > Services.
2. Select ExtremeZ-IP File Server for Macintosh and click the stop symbol to stop the service.
3. Install ExtremeZ-IP by following the steps in "The Installation Procedure" below.
The installer restarts the ExtremeZ-IP Service when the installation is complete.

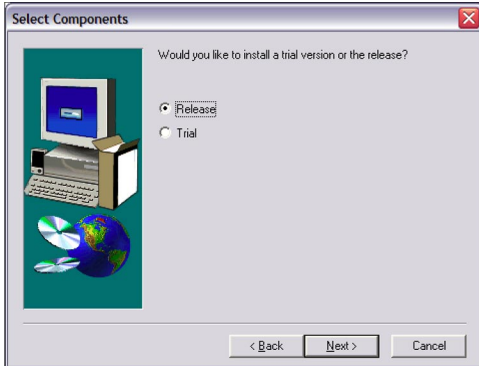
The Installation Procedure

1. Run the installer program you downloaded from the Internet or located on the ExtremeZ-IP CD.
If you have other programs running, shut them down.



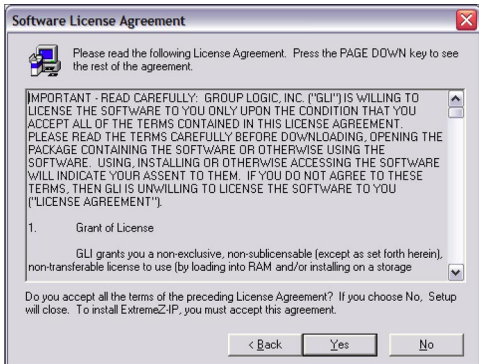
Click Next to begin.

The Select components dialog box appears.



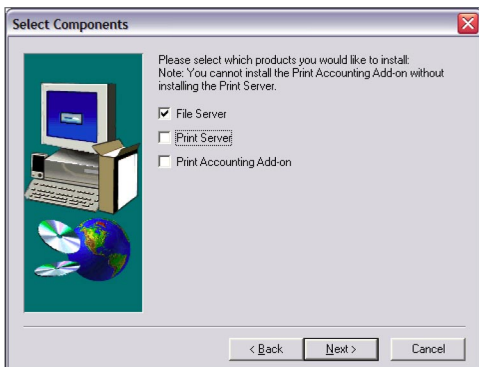
2. Click Release or Trial to choose to install the trial version (21 day expiration) or the purchases release. Click Next.

The Software License Agreement dialog box appears.

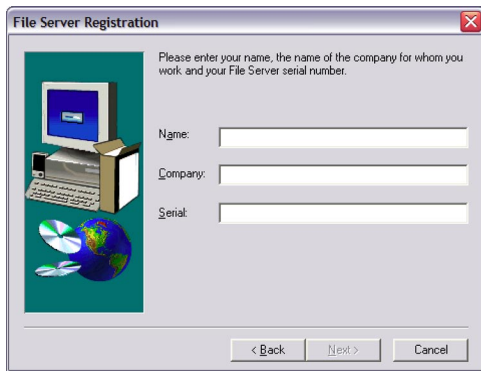


3. Click Yes to indicate you accept the software license agreement.

The Select Components dialog box appears.



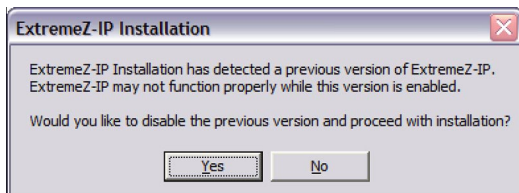
4. Choose the components you want to install: File Server, Print Server, and/or Print Accounting Add-On, then, click Next. The File Server Registration dialog box appears.



5. If you are installing a purchased release, enter your Name, Company and Serial Number, then, click Next. The Choose Destination Location dialog box appears.

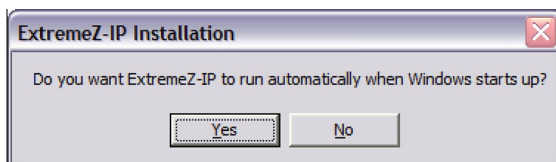


6. Choose a destination for the ExtremeZ-IP files, then, click Next. It is recommended that you choose the defaults. If you are running a previous trial or release version of ExtremeZ-IP, a dialog box appears asking if you would like to disable the old version.

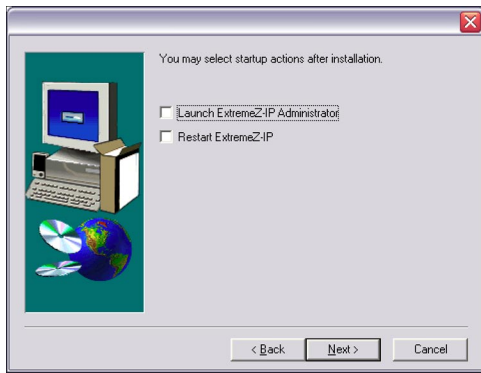


Choose Yes when asked if you want to disable this older version.

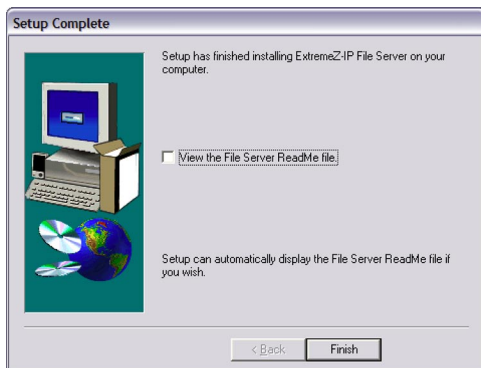
Your settings migrate to the new installation automatically. A dialog box appears asking if you would like ExtremeZ-IP to start automatically when Windows starts up.



7. Click yes if you want ExtremeZ-IP to start automatically when Windows starts up, then, click Next. It is recommended that you do start ExtremeZ-IP automatically. ExtremeZ-IP installs and gives you the option of launching ExtremeZ-IP Administrator program immediately after the Setup Wizard completes its job.



8. Check the Launch ExtremeZ-IP Administrator checkbox, then, click Next. ExtremeZ-IP gives you the option of reading the ReadMe file.

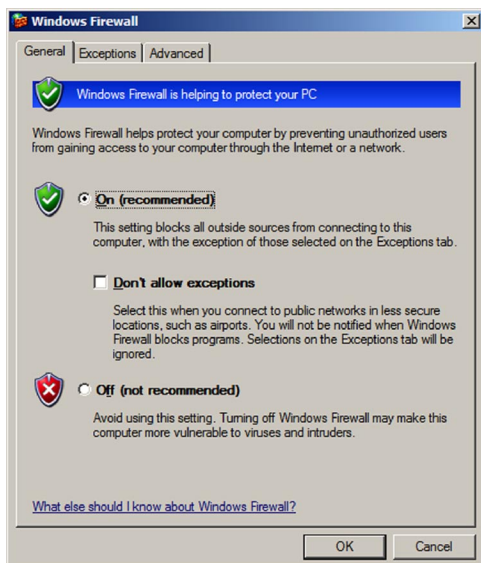


9. Select the View the File Server ReadMe file checkbox, then click Finish to close the installer and open the ReadMe file. The ReadMe file may contain information more current than this Guide or the User Manual.

FIREWALL CONSIDERATIONS ON WINDOWS XP AND 2003

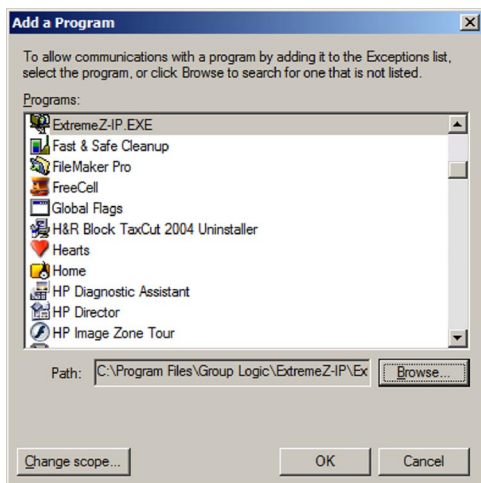
You must create a firewall exception for the application ExtremeZ-IP.exe. Even if your firewall is turned off, we recommend that you create this exception in the event someone accidentally turns the firewall on (some Windows updates will turn your firewall on automatically). To create the firewall exception, follow these steps.

1. From the Control Panel open the firewall (Security Center in XP). The Windows Firewall dialog appears with the General tab selected.



2. On the General Tab, make sure "Don't Allow Exceptions" is **not** selected.

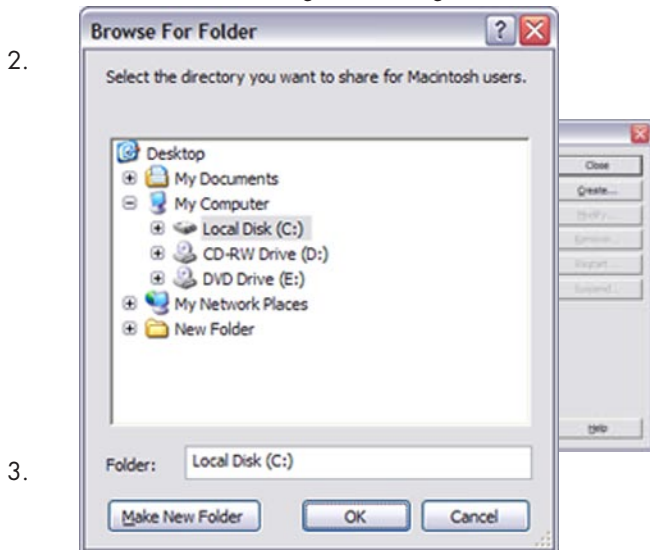
3. Click the Exceptions Tab, then, click the Add Program button.



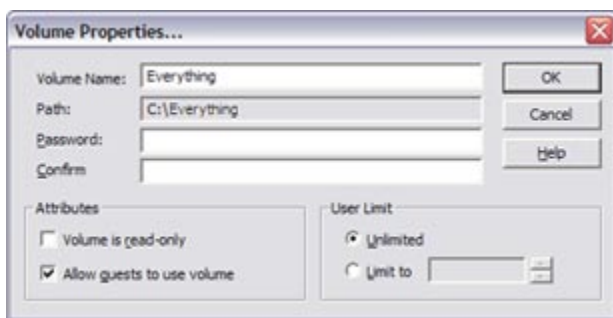
4. Select ExtremeZ-IP.exe.
You may have to browse to C: \Program Files \Group Logic \ExtremeZ-IP.
5. Select OK and close the Firewall configuration window.

CONFIGURING YOUR FIRST SHARED VOLUME

1. From the Start menu, go to All Programs > ExtremeZ-IP to open the ExtremeZ-IP Administrator.



4. Browse for and select the folder you want to share, then, click OK.
The Volume Properties dialog box appears.



5. In the Volume Properties dialog box, change the volume name, if you wish. In addition, you may set a volume password, limit the number of users having access at one time to the volume, make the volume read-only, and allow guest access.

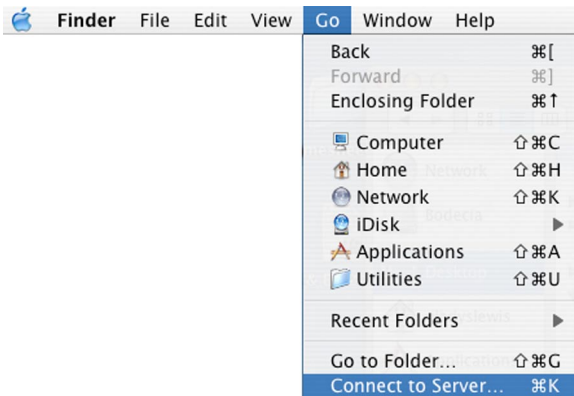
6. Click OK.
Your volume is added to the list of Volumes to be shared online.

Please note: ExtremeZ-IP relies on the SYSTEM account on its Windows server to perform many of its core functions. For this reason, any folder hierarchy that is shared as a volume with ExtremeZ-IP requires that the SYSTEM account has "Full Control" access to the entire folder hierarchy. This is a default permission for the Windows OS partition but any additional disks or partitions containing ExtremeZ-IP volumes must have SYSTEM = "Full Control" set to allow ExtremeZ-IP to function properly. Please verify that all the volumes you share have this permission set.

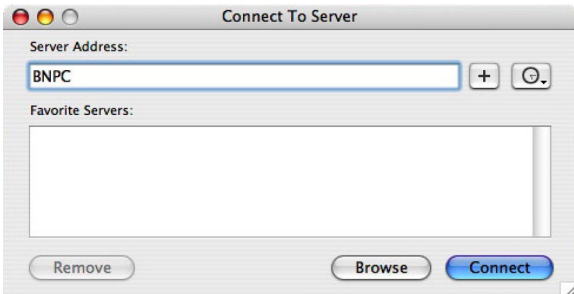
ACCESSING A VOLUME FROM A MAC OS X COMPUTER

Follow the steps below for access the volume you shared.

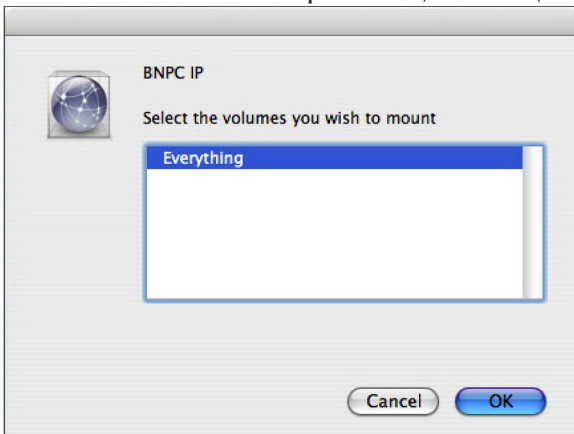
1. From the Macintosh Finder Go menu, select Connect to Server...



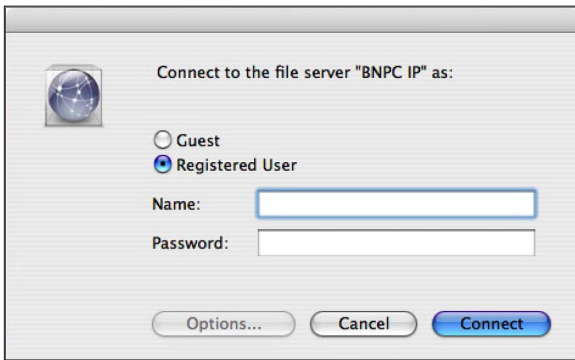
The Connect to Server dialog box appears.



2. Type the name of the ExtremeZ-IP Server as the Server Address, then, click Connect.
You can use the Windows computer name, DNS name, or IP address. The volumes on the Server are displayed.



3. Select the volume you want to connect to and click OK.

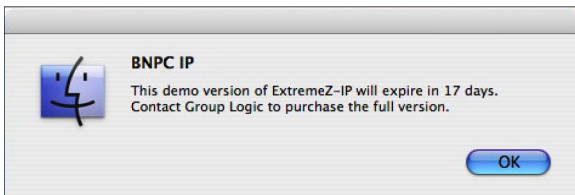


4. Enter the Windows username and password you want to use to access the volume.
You may be required to use "domain\username" if your server and account are on a Windows domain.

Your volume is mounted and available in the Macintosh Finder.

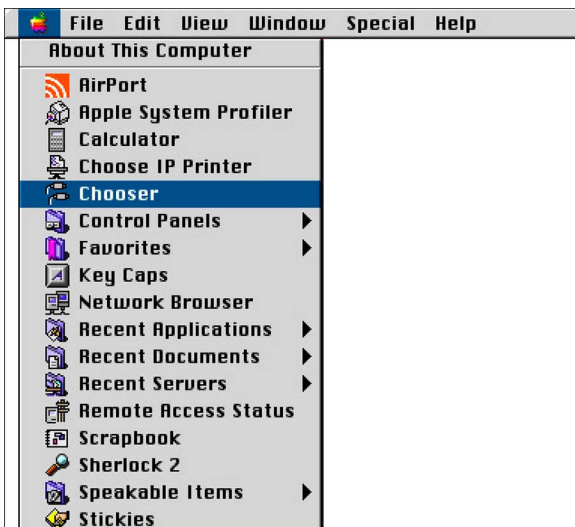


If the ExtremeZ-IP Server is running a trial version of ExtremeZ-IP, before mounting the volume, a dialog box appears indicating the number of days left in your trial. Click OK.

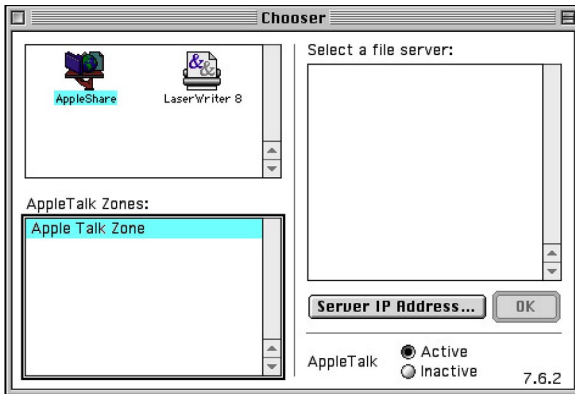


ACCESSING A VOLUME FROM A MAC OS 9 COMPUTER

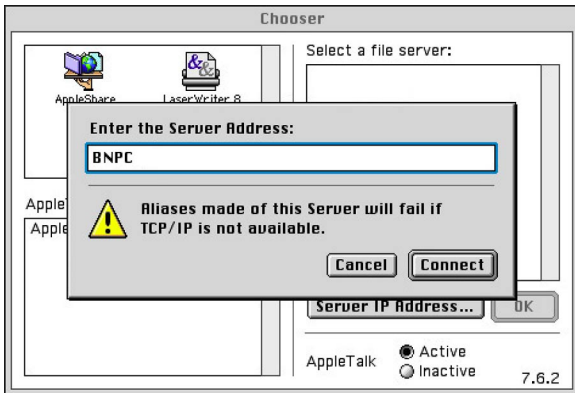
1. Open the Apple menu and select the Chooser.



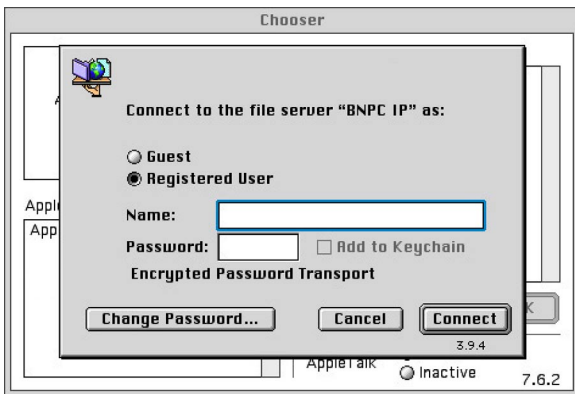
The Chooser appears.



2. Select the Server IP Address.. button.
The Enter the Server Address dialog box appears.



3. Type the IP address, full DNS name, or Windows computer name of the ExtremeZ-IP Server you would like to connect to.
The following dialog box appears.



4. Enter the Windows username and password you want to use to access the volume.
You may be required to use "domain\username" if your server and account are on a Windows domain. The list of volumes shared using ExtremeZ-IP appears.



5. Select the volume you want to connect to.
The volume is mounted and available on your desktop.