

MassTransit Installation Guide for Enterprise and Professional Servers on Macintosh

GroupLogic

February 4, 2008

Group Logic, Inc.
1110 North Glebe Road, Suite 450
Arlington, VA 22201
Phone: 703-528-1555 Fax: 703-528-3296
E-mail: info@grouplogic.com
Internet: <http://www.grouplogic.com>

<u>Document Version History</u>	3
<u>Using This Document</u>	4
BEFORE YOU BEGIN	4
SYSTEM REQUIREMENTS	4
<u>MySQL</u>	5
INSTALLING MYSQL	5
<u>MassTransit</u>	6
INSTALLING MASSTRANSIT	6
TROUBLESHOOTING	8
LAUNCHING THE MASSTRANSIT ENGINE	8
SHUTTING DOWN THE MASSTRANSIT ENGINE	8
LAUNCHING THE MASSTRANSIT ADMINISTRATOR	8
SHUTTING DOWN THE MASSTRANSIT ADMINISTRATOR	10
TROUBLESHOOTING	10
<u>Optional MySQL GUI Tools</u>	11
INSTALLING THE MYSQL GUI TOOLS	11
LAUNCHING THE MYSQL ADMINISTRATOR	11
LAUNCHING THE MYSQL QUERY BROWSER	11
INSTALLING THE MYSQL.PREFPANE	12
<u>Configuring Remote Administration When MassTransit Is Already Installed</u>	13
CONFIGURING REMOTE ADMINISTRATION IN MASSTRANSIT	13
CONFIGURING REMOTE ADMINISTRATION IN MYSQL	13
TROUBLESHOOTING	15
<u>Web Configuration for Enterprise Servers Only</u>	16
<u>Auto-starting MassTransit</u>	16
<u>Other MassTransit 5.1 Resources</u>	16

Document Version History

Version	Date	Updater	Details
1.0	2006/03/13	CLM	Created.
1.1	2006/11/10	CLM	Added information for Mac OS X 10.4.8 and Intel Mac support.
1.2	2007/01/08	CLM	Updated link to Web Configuration Instructions.
1.3	2007/04/18	JLB	Updated Group Logic Support contact information.
2.0	2007/08/21	CLB	Updated for 5.1.
2.1	2008/02/04	CLB	Updated copyright.

Using This Document

Before You Begin

To install MassTransit 5.1 on Mac OS X 10.4 client or later, or Mac OS X 10.4 Server or later, you will need to have a USB hardware key (dongle) and a version 5 serial number. ADB dongles are no longer supported. This new serial number is provided with your MassTransit 5.1 CD or with your download package. Please contact Group Logic Support at 703-527-7979 or support@grouplogic.com if you need to obtain either the hardware key or the serial number.

System Requirements

For a complete listing of all system requirements, please see the MassTransit ReadMe. We strongly recommend that you contact the Group Logic MassTransit team to consult with them prior to purchasing or upgrading a system to run MassTransit. Using their expertise in this area, the team can evaluate with you your specific needs and determine the optimal system configuration for use with MassTransit under those conditions. Group Logic no longer supports Mac OS 9.

Note on Intel Mac support: MassTransit can be installed and run on Macs that use Intel CPUs. MassTransit is a PowerPC-based application that runs using Rosetta emulation. MassTransit 5.0.1x29 or later is needed to install MassTransit Pro and Enterprise on Intel Macs. Earlier versions of the MassTransit 5.0 Satellite Server and Application Client also work on Intel Macs. The MassTransit 5.1 web client plug-in runs natively on Intel Macs.

MySQL

MassTransit utilizes MySQL for its database. MassTransit is dependent upon MySQL, so if it is not running, then MassTransit cannot be installed. Prior to installing MassTransit, you will need to install MySQL 5.0.42; this is also provided on your MassTransit 5.1 CD or with your download package. If you are installing MassTransit on Mac OS X 10.4.8, please read the Knowledge Base article for the recommended version of MySQL:

<http://www.grouplogic.com/knowledge/index.cfm/fuseaction/view/docID/245> .

Note: If you have an earlier version of MySQL already installed, you must restart MySQL after you have successfully upgraded to MySQL 5.0.42 to complete the installation. For additional information, go to <http://dev.mysql.com/doc/refman/5.0/en/upgrade.html> .

Installing MySQL

MySQL is a relational database used by MassTransit to store and retrieve data. Follow the below instructions to install and launch MySQL.

1. Unzip the MySQL installation files by double-clicking the appropriate mysql .dmg file located on your CD or with your download package. A directory opens containing the required installers.
2. To install the MySQL engine, double click the appropriate mysql .pkg file.
3. An "Introduction" window appears. Select the **Continue** button to proceed.
4. The "ReadMe" window appears. Select **Continue** to proceed.
5. The "License" window appears. Read the License and select **Continue** to proceed.
6. A dialog then appears asking you to accept the terms of the agreement. Select the **Agree** button to continue or select the **Disagree** button to cancel the installation.
7. The "Select Destination" window appears next and the default destination is highlighted; you may select a different destination. Once you make your selection select **Continue**.
8. The "Installation Type" window appears; select **Install** for the basic installation.
9. Once the installation is complete a window appears stating the software was successfully installed. Select the **Close** button.

MySQL has now been successfully installed; if you installed to the default location, it is located in the /usr/local/ folder.

To configure MySQL to launch when your machine starts up, follow the below instructions.

10. Double click MySQLStartupItem.pkg.
11. An "Introduction" window appears. Select the **Continue** button to proceed.
12. The "Select Destination" window appears next and the default destination is highlighted. Make your selection and select the **Continue** button.
13. The "Installation Type" window appears; select **Install** or **Upgrade** for the basic installation.
14. Once the installation is complete a window appears stating the software was successfully installed. Select **Close**.

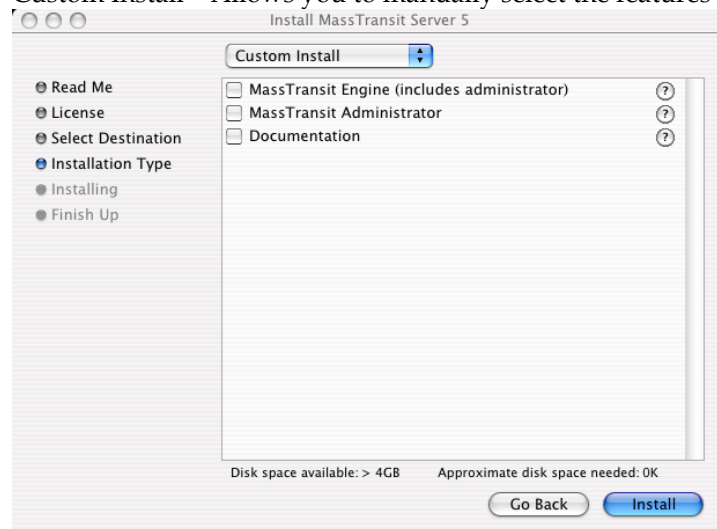
Additional MySQL tools can be found in the Optional MySQL GUI Tools section.

MassTransit

Note on Intel Mac support: MassTransit can be installed and run on Macs that use Intel CPUs. MassTransit is a PowerPC-based application that runs using Rosetta emulation. MassTransit 5.0.1x29 or later is needed to install MassTransit Pro and Enterprise on Intel Macs. Earlier versions of the MassTransit 5.0 Satellite Server and Application Client also work on Intel Macs. The MassTransit 5.1 web client plug-in runs natively on Intel Macs.

Installing MassTransit

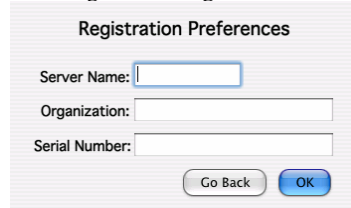
1. Verify MySQL is running. You can determine this via either the MySQL Preference Pane in System Preferences or look at the Activity Monitor.
2. Double click **Install MassTransit Server 5** located on your CD or with your download package to launch the InstallShield Wizard.
NOTE: If you are installing on Intel Macs, before running the installer you will need to right-click on the MassTransit installer and select **Get Info**. On the dialog that appears, click the checkbox labeled "Open Using Rosetta". Close the dialog, double click the installer, and proceed. You may quit the installation at any time; the **Go Back** button is enabled until the **Install** button is selected.
3. The "ReadMe" window appears first. Read it and select the **Continue** button to proceed.
4. The "License Agreement" window appears next. Once you have read and agreed with the license agreement, select **Continue** to proceed.
5. A dialog then appears asking you to accept the terms of the agreement; select **Agree** to continue or **Disagree** to cancel the installation.
6. The "Select Destination" window appears next. The default is the Applications folder; you may select a different destination. Once you make your selection select the **Continue** button.
7. The "Installation Type" window appears next. You have two choices available via the spin box: Easy Install or Custom Install.
 - a. Easy Install (default) - Installs the MassTransit Engine, MassTransit Administrator, and Documentation.
 - b. Custom Install - Allows you to manually select the features you want.



- i. Checking the MassTransit Server Engine will install both the Engine and the MassTransit Administrator; this is necessary so you can configure the Engine.
- ii. Checking just the MassTransit Administrator will install just the Administrator. Starting in MassTransit 5.0, the file transfer engine runs as a headless application and can be accessed for viewing and administration by a separate application, the MassTransit Administrator. MassTransit Enterprise allows local and remote Administrators to connect. When remote administration is enabled, the

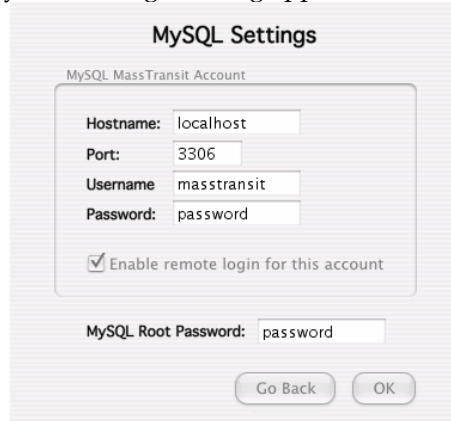
MassTransit server can be administered from both Macintosh and Windows machines. MassTransit Professional only allows an Administrator to connect from the local computer. Additional details can be found below in the Configuring Remote Administration section.

- iii. Checking the MassTransit Manuals will install manuals and documentation.
 - c. Once you have made your selection, select **Install** to continue.
8. While installing, the “Registration Preferences” dialog appears. All fields are mandatory.



The "Registration Preferences" dialog box contains three text input fields: "Server Name:", "Organization:", and "Serial Number:". Below the fields are two buttons: "Go Back" and "OK".

- a. Enter your **Server Name**; this is the name of the computer where you are installing MassTransit.
 - b. Enter the name of your **Organization**.
 - c. Enter the **Serial Number** provided to you by Group Logic.
 - d. Select **OK** to continue.
9. The “MySQL Settings” dialog appears next.



The "MySQL Settings" dialog box has a title "MySQL Settings" and a subtitle "MySQL MassTransit Account". It contains a group box with four fields: "Hostname:" (localhost), "Port:" (3306), "Username:" (masstransit), and "Password:" (password). Below the group box is a checked checkbox labeled "Enable remote login for this account". At the bottom, there is a "MySQL Root Password:" field (password) and two buttons: "Go Back" and "OK".

- a. In the MySQL MassTransit Account section, the following information is required:
 - i. Hostname: [default: localhost] Leave this setting configured as “localhost” so MassTransit can access the local database. *Do not use your local IP address.*
 - ii. Port: [default: 3306] Leave this setting configured to “3306” unless you have changed the TCP port used by the MySQL database server (this is rare).
 - iii. Username: [default: masstransit] This will be the name of the user account created in MySQL that MassTransit will use to access the database. You may change it to any username you wish.
 - iv. Password: This will be the password for the user account created in MySQL that MassTransit will use to access the database. You may change it to any password you wish.
 - v. “Enable remote login for this account”: [default: not selected] If you wish to allow administration of the MassTransit server using the MassTransit Administrator from other machines, you will need to check this option. If it is not checked, your MassTransit server will not allow remote administration, although you will be able to administer the server locally. If you wish to allow remote administration, it is recommended that you enable it at this time; if you do not enable it now, you will later have to manually configure the proper permissions for both MassTransit and MySQL. Instructions on how to manually configure this can be found below in the Configuring Remote Administration

- section of this document. MassTransit Professional does not allow remote administration, so this box does not need to be checked.
- b. Enter your “MySQL Root Password” if you set one when installing MySQL. If you did not, leave this field blank. The root password is required so that the MassTransit installer can create the new user account in MySQL.
 - c. Select **OK** to continue.
10. Once the installer validates the entered information, a dialog appears stating, “MySQL account configured successfully!” Select **OK** to continue.
 11. Two additional dialogs will appear while MassTransit is being installed:
 - a. The first will ask, “Do you want to automatically optimize your network settings for broadband?” Select **Yes** to optimize the TCP/IP stack for MassTransit protocol connections; select **Yes** or **No** to continue.
 - b. The second will ask, “MassTransit stores files received from and files being sent to other contacts in the User Mailboxes folder. Do you wish to share this folder with File Sharing?” Sharing your user mailboxes folder will allow users to connect from other machines and access files in the standard user mailboxes for MassTransit. If you do not share this folder now, you will need to manually share the folder after MassTransit is installed if you want to allow remote access to these folders. Select **Yes** or **No** to continue.
 12. The “Finish Up” window appears when the installation is complete. You have two options:
 - a. Select **Quit** to exit the installer.
 - b. Select **Continue** and the “Installation Type” window will reappear; you can install additional MassTransit features. Repeat steps 8 – 13.

Troubleshooting

Problem: I did not get a dialog stating “MySQL account configured successfully!” while installing MassTransit.

Solution:

1. Is MySQL running? You can determine this via either the MySQL Preference Pane in System Preferences or look at the Activity Monitor.
2. Did you enter the correct password?
3. Did you incorrectly leave the MySQL Root password field blank?

Launching the MassTransit Engine

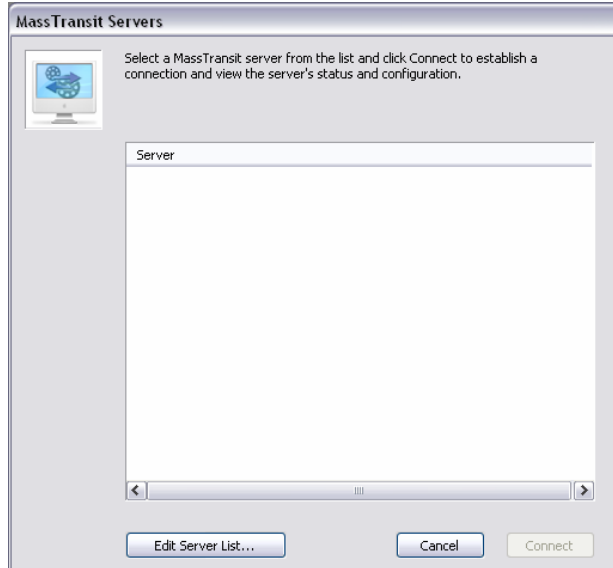
Double click the MassTransit Engine file located in the root MassTransit folder; the default location is /Applications/MassTransit Server 5 Folder/. The MassTransit Engine icon appears on the dock and remains there while running.

Shutting Down the MassTransit Engine

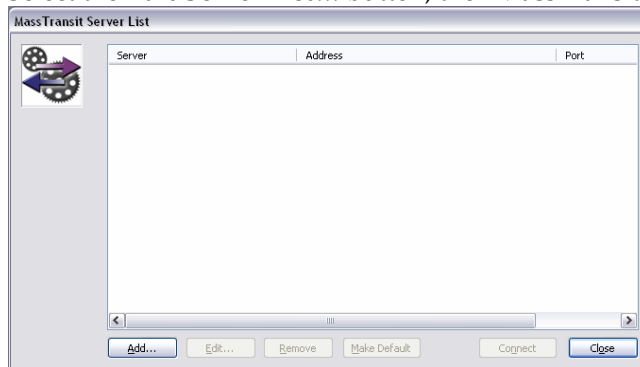
To shut down the MassTransit Engine, select the MassTransit Engine from the dock, go the **MassTransit Engine** menu and select **Quit MassTransit Engine**.

Launching the MassTransit Administrator

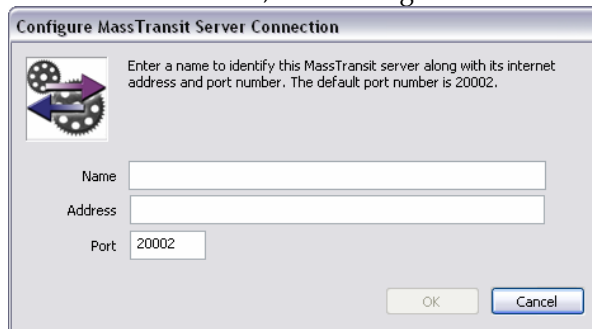
1. Double click the MassTransit Administrator file located in the root MassTransit folder; the default location is /Applications/MassTransit Server 5 Folder/. The splash screen appears for a moment and then the MassTransit Administrator icon appears on the dock and remains there while running.
2. To connect to your MassTransit server, go to the **File** Menu and select **Connect to Server**; the “MassTransit Servers” window appears.



3. Add the server you wish to connect to:
 - a. Select the **Edit Server List...** button; the “MassTransit Server List” appears.



- b. Select the **Add** button; the “Configure MassTransit Server Connection” dialog appears.



- c. Add the name and address of the server you are connecting to; all fields are required. If Remote Administration is enabled and you are connecting to a remote server, enter that machine’s information; see the Remote Administration section of this document for additional information.
 - i. Enter the server **Name** (or localhost if you are connecting locally); this is just a name to identify the server you’re connecting to.
 - ii. Enter the server IP **Address** (or localhost if you are connecting locally).
 - iii. Enter the **Port**. Use 20002 (the default) unless the MassTransit server has been configured to use a different port.
 - d. Select **OK** to continue.

4. After selecting **OK** you return to the “MassTransit Server List” window and see the server you just created.
5. To connect, highlight the server entry and select **Connect**. Note: You will be able to connect to the server only when the Engine is running, otherwise a dialog will appear stating that a connection cannot be made to the server.
6. On connection, the “MassTransit” toolbar appears with the following buttons: **Contacts, Status, Files, Log, and Setup**. Click any button to go to the corresponding window.

Shutting Down the MassTransit Administrator

To disconnect from the server only, go to the **File** menu and select **Disconnect From Server**. This will not shut down the Administrator. To exit the MassTransit Administrator go the **MassTransit Administrator** menu and select **Quit MassTransit Administrator**. If you are currently connected to a server, you will be disconnected before the Administrator quits.

Troubleshooting

Problem: The MassTransit Engine shut down immediately upon launch.

Solution:

1. Open the Console located at: /Applications/Utilities/. Look at the console.log file.
2. Open the log in the root MassTransit folder: /Applications/MassTransit Server 5 Folder/Logs/. The file names are timestamp folders, so open the most current log file, i.e. log-3.20.06.11.36.AM.txt.
3. Open the logs located at: ~/Library/Logs/Crash Reporter/. Look for a file with the following name: MassTransit Engine.crash.log.

Problem: The MassTransit Administrator shut down immediately upon launch.

Solution:

1. Verify the Engine is running. When the engine is not running, a MassTransit dialog appears stating, “An error occurred with MassTransit: Unable to connect to the MassTransit server.”
2. Open the Console located at: /Applications/Utilities/. Look at the console.log file.
3. Open the log in the root MassTransit folder: /Applications/MassTransit Server 5 Folder/Logs/. The file names are timestamps, so open the most current log file, i.e. UI-log-3.20.06.11.36.AM.txt.
4. Open the logs located at: ~/Library/Logs/Crash Reporter/. Look for a file with the following name: MassTransit Administrator.crash.log.

Optional MySQL GUI Tools

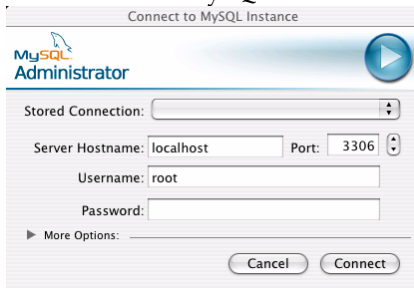
Below are instructions for installing the MySQL GUI tools containing the MySQL Administrator and the MySQL Query Browser. Install the MySQL Administrator and Query Browser to administer and troubleshoot your MassTransit server. Install the MySQL.prefPane to start and stop the MySQL server from your System Preferences.

Installing the MySQL GUI Tools

1. Double-click “mysql-gui-tools-5.0-r12-osx10.4-universal.dmg”. A directory opens containing the MySQL Tools icon.
2. Install the tools by dragging the MySQL Tools icon to your applications folder.

Launching the MySQL Administrator

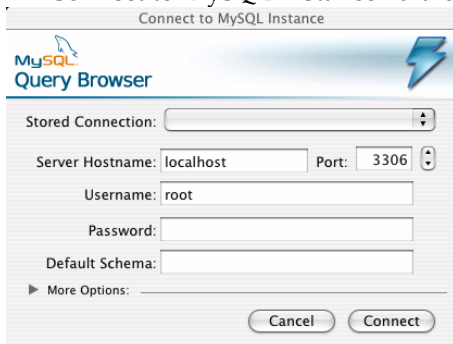
1. Launch the Administrator by double-clicking MySQL Administrator from the Applications folder.
2. A “Connect to MySQL Instance” dialog appears.



- a. **Stored Connection** can be left blank; it will auto-populate on the next launch.
 - b. **Server Hostname:** [default: localhost] Leave this setting configured as “localhost” so MassTransit can access the local database. *Do not use your local IP address.*
 - c. **Port:** Leave this setting configured to “3306” unless you have changed the TCP port used by the MySQL database server (this is rare).
 - d. **Username:** This will be the name of the user account created in MySQL that MassTransit will use to access the database. You may change it to any username you wish.
 - e. Enter your **Password**.
 - f. Select **Connect**.
3. The MySQL Administrator opens to the Information page and you can now administer MySQL as needed. For additional information, go to <http://www.MySQL.com/products/tools/administrator> .

Launching the MySQL Query Browser

1. Launch the Query Browser by double-clicking MySQL Query Browser from the Applications folder.
2. A “Connect to MySQL Instance” dialog appears.

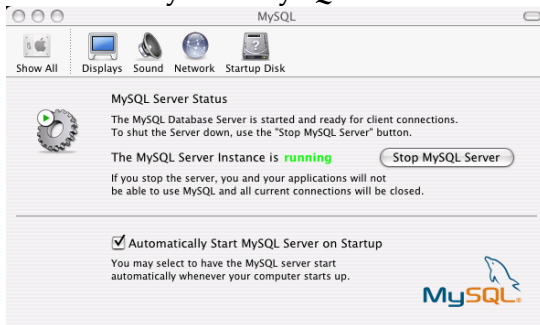


- a. **Stored Connection** can be left blank; it will auto-populate on the next launch.
 - b. **Server Hostname:** [default: localhost] Leave this setting configured as “localhost” so MassTransit can access the local database. *Do not use your local IP address.*
 - c. **Port:** Leave this setting configured to “3306” unless you have changed the TCP port used by the MySQL database server (this is rare).
 - d. **Username:** This will be the name of the user account created in MySQL that MassTransit will use to access the database. You may change it to any username you wish.
 - e. Enter your **Password**.
 - f. **Default Schema** can be left blank. MassTransit does generate a schema on launch called mtdatabase.
 - g. Select **Connect**.
3. The MySQL Query Browser opens to the Information page and you can now query your MySQL database as needed. For additional information, go to <http://www.MySQL.com/products/tools/query-browser> .

Installing the MySQL.prefPane

To start and stop the MySQL server from your System Preferences, you will need to install the MySQL Preference Pane.

1. Double-click MySQL.prefPane. This is located in the same directory that opened after you double-clicked the appropriate mysql .dmg file on your CD or with your download package.
2. A dialog appears asking if you want to install the preference pane for just you or all users. Select your option and select the **Install** button.
3. The MySQL preference pane opens and shows you MySQL is running and that the checkbox **Automatically Start MySQL Server on Startup** is selected.



Configuring Remote Administration When MassTransit Is Already Installed

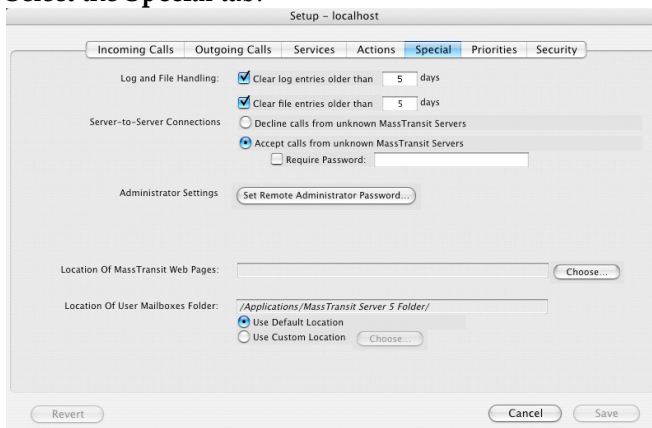
Starting in MassTransit 5.0, the file transfer engine runs in a headless mode and can be accessed for viewing and administration by a separate application, the MassTransit Administrator. MassTransit Enterprise allows local and remote Administrators to connect. When remote administration is enabled, the MassTransit server can be administered from both Macintosh and Windows machines. MassTransit Professional only allows an Administrator to connect from the local computer, so this section is not relevant.

The easiest way to configure remote administration is to check the checkbox when you install MassTransit 5.1. If you already have MassTransit installed and want to enable Remote Administration, use the following instructions. Both MassTransit and MySQL will need to be configured before remote connections will be accepted.

Configuring Remote Administration in MassTransit

Note: This is unnecessary if you selected the **Enable Remote login for this account** checkbox during installation.

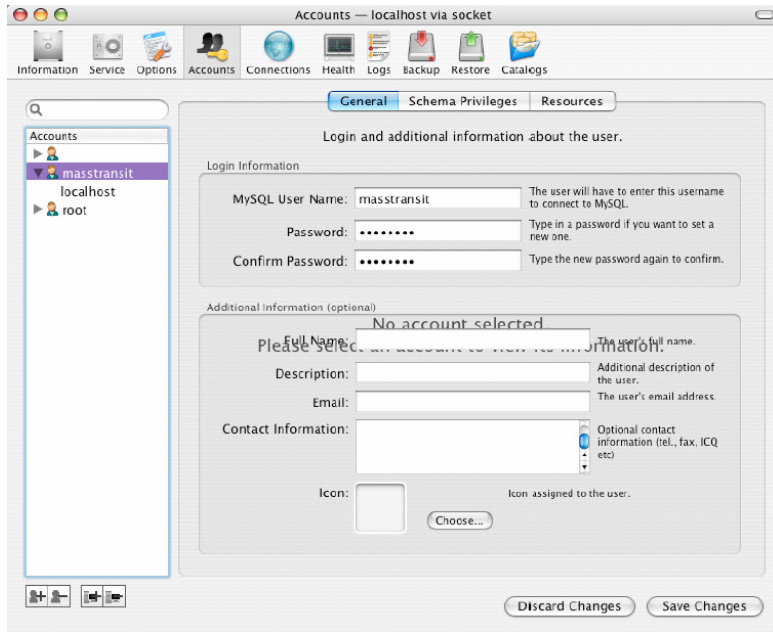
1. Via the MassTransit Administrator connect to the local server.
2. Select the **Setup** button on the toolbar.
3. Select the **Special** tab.



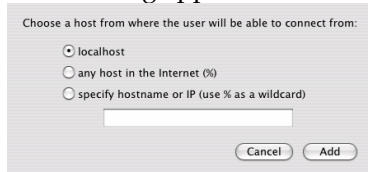
4. Click the **Set Remote Administrator Password...** button.
5. The “Enter Password” dialog appears; enter your password. This password will have to be entered by a Remote Administrator when it attempts to connect to your server.
6. Select the **OK** button and now any Remote Administrators with the password can connect to your server.

Configuring Remote Administration in MySQL

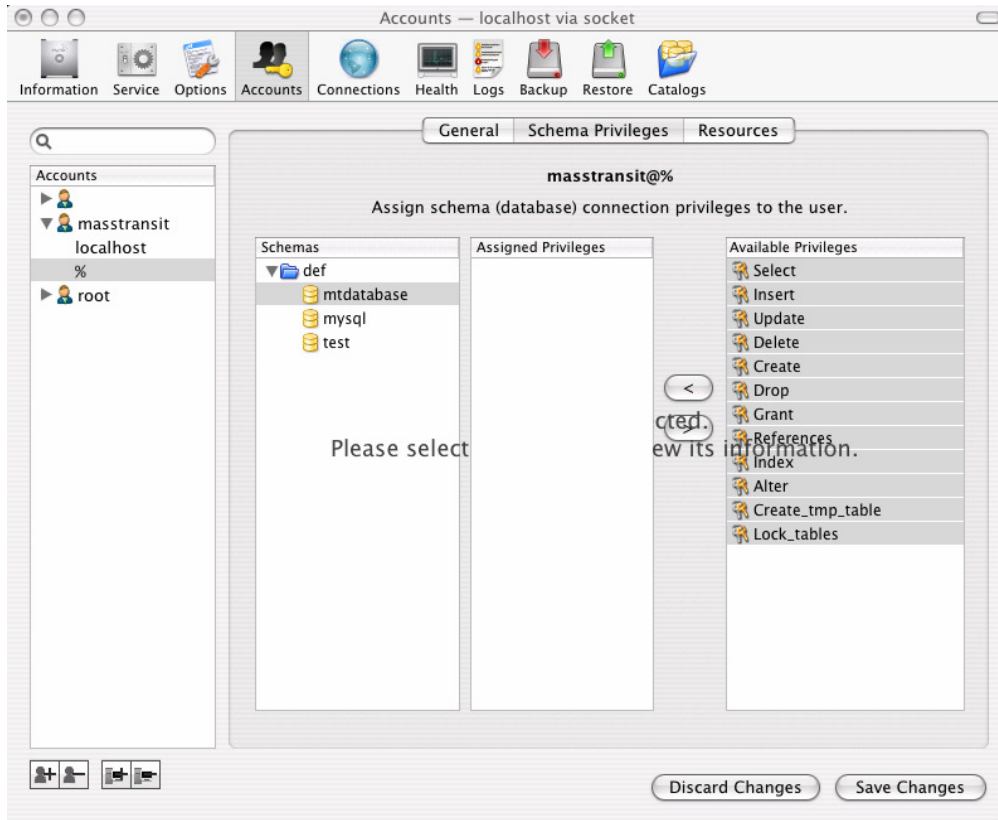
7. Launch the MySQL Administrator.
8. Go to the Accounts tab.
9. To the left of General tab, expand and highlight the “masstransit” account. This account may have a different name depending on the username you entered on the “MySQL Settings” dialog during the installation of MassTransit.



- a. Select the Add a host...button to add a host to the masstransit account. This is the third button from the left below the Accounts listing.
- b. A dialog appears with three options:



- i. **localhost** – only the local machine (this won't help you for remote administration).
 - ii. **any host in the Internet (%)** - this will allow any machine to connect to the database.
 - iii. **specify hostname or IP (use % as a wildcard)** – this allows you to specify a specific hostname or IP address from which remote administration will be allowed. This is more secure than “any host”, but you will need to add a host for every machine from which you wish to administer the MassTransit server.
 - iv. Select **Add** to continue.
 - c. The password on the General tab auto-populates the MySQLpassword used when you installed MassTransit. Remote administrators will not need to know this password to connect.
 - d. Select the **Save Changes** button.
10. Verify the host you just created in the Accounts section is highlighted and select the Schema Privileges Tab.
- a. In the Schemas section, highlight mtdatabase.
 - b. Go to the Available Privileges Section and highlight all of the items listed.



- c. Click the < button so all of the Available Privileges become Assigned Privileges.
 - d. Select the **Save Changes** button.
11. Go to the Resources tab.
 - a. In the Max. Questions: field enter the number of queries the user can execute within one hour. "Unlimited" is the default when the MassTransit installer creates this account.
 - b. Select the **Save Changes** button.

Now that you have configured both MySQL and MassTransit, Remote Administration is enabled.

Troubleshooting

Problem: A dialog appears stating, "An error occurred with MassTransit: Remote Administration is disabled because the required password has not been configured."

Solution: Remote Administration is not enabled in MassTransit; follow steps 1-6 to configure it.

Problem: A dialog appears stating, "An error occurred with MassTransit: Failed to connect to server due to problems initializing - most likely a database issue."

Solution: Remote Administration is not enabled in MySQL; follow steps 7-11 to configure it.

Web Configuration for Enterprise Servers Only

For information about configuring MassTransit for use with web servers, see the Web Configuration Instructions document located on the MassTransit Latest Releases web page in the MassTransit 5.0 Documentation section: <http://www.grouplogic.com/files/glidownload/mtreleases.cfm> .

Auto-starting MassTransit

For information about configuring MassTransit to launch automatically when your machine starts up, see the following Knowledge Base article located at:

http://www.grouplogic.com/knowledge/index.cfm/fuseaction/view_Bug/docID/223 .

Other MassTransit 5.1 Resources

Go to <http://www.grouplogic.com/files/mt/51/OtherMassTransit51Resources.html> for additional articles to help you set up, configure, and use MassTransit 5.1 and its new features. The [Group Logic Knowledge Base](#) contains many articles that provide detailed information on MassTransit 5.1 and its features and components. The HTML version of this file, "OtherMassTransit51Resources.html", is provided with your MassTransit 5.1 CD or with your download package.

© 1995-2008 Group Logic Incorporated. All Rights Reserved.