

# MassTransit Upgrade Process

MassTransit 5.1 for Mac OS X

MassTransit 5.1 for Windows

**GroupLogic**

February 4, 2008

Group Logic, Inc.  
1110 North Glebe Road, Suite 450  
Arlington, VA 22201  
Phone: 703-528-1555 Fax: 703-528-3296  
E-mail: [info@grouplogic.com](mailto:info@grouplogic.com)  
Internet: <http://www.grouplogic.com>

<b><u>Using this Document</u></b>	<b>4</b>
<b><u>Making a Backup Before Upgrading</u></b>	<b>5</b>
<b><u>Upgrading on Mac OS X</u></b>	<b>6</b>
MASSTRANSIT VERSIONS PRIOR TO 4.5	6
<b><u>MassTransit 4.5 to 5.1</u></b>	<b>6</b>
ENTERPRISE AND PROFESSIONAL SERVERS	6
SATELLITE SERVERS	8
APPLICATION CLIENTS	10
MIGRATING CONFIGURATIONS	10
WEB CONFIGURATION FOR ENTERPRISE SERVERS ONLY	12
OTHER MASSTRANSIT 5.1 RESOURCES	12
<b><u>MassTransit 5.0 to 5.1</u></b>	<b>13</b>
ENTERPRISE AND PROFESSIONAL SERVERS	13
SATELLITE SERVERS	13
APPLICATION CLIENTS	13
MIGRATING CONFIGURATIONS	14
WEB CONFIGURATION FOR ENTERPRISE SERVERS ONLY	14
OTHER MASSTRANSIT 5.1 RESOURCES	15
<b><u>Upgrading on Windows</u></b>	<b>16</b>
MASSTRANSIT VERSIONS PRIOR TO 4.5	16
<b><u>MassTransit 4.5 to 5.1</u></b>	<b>16</b>
ENTERPRISE AND PROFESSIONAL SERVERS	16
SATELLITE SERVERS	18
APPLICATION CLIENTS	20
MIGRATING CONFIGURATIONS	20
WEB CONFIGURATION FOR ENTERPRISE SERVERS ONLY	22
OTHER MASSTRANSIT 5.1 RESOURCES	22
<b><u>MassTransit 5.0 to 5.1</u></b>	<b>23</b>
ENTERPRISE AND PROFESSIONAL SERVERS	23
SATELLITE SERVERS	23
APPLICATION CLIENTS	23
MIGRATING CONFIGURATIONS	23
WEB CONFIGURATION FOR ENTERPRISE SERVERS ONLY	25
OTHER MASSTRANSIT 5.1 RESOURCES	25
<b><u>Verifying the Upgrade</u></b>	<b>26</b>
MAC OS X	26
WINDOWS	28
<b><u>Verifying Connectivity</u></b>	<b>30</b>
<b><u>Verifying the Web Configuration for Enterprise Servers only</u></b>	<b>30</b>

<b><u>Other MassTransit 5.1 Resources</u></b>	<b><u>30</u></b>
<b><u>Appendix A: Configuring Xinetd when not running as Root</u></b>	<b><u>31</u></b>

## Using this Document

### Before You Begin

This document details how to upgrade an existing MassTransit installation to MassTransit 5.1. Please follow the steps carefully to ensure that all of your settings are maintained with the new installation.

Before starting the upgrade process, please verify that you have the following:

- Version number of MassTransit you are currently running.
- MassTransit CD for the latest release, or installers downloaded electronically (see <http://www.grouplogic.com/files/glidownload/mtreleases.cfm>).
- The Installation Guide for Macintosh or Windows; this should be included on the CD.

MassTransit Enterprise and Professional users will also need:

- MassTransit serial number for version 5. To locate your current version 5 serial number, launch the MassTransit Administrator, go to the **File** menu, and select **Server Information**. Your serial number is the last item listed in the **Licensed To:** section. Users upgrading from 4.5.x must obtain a version 5 serial number from Group Logic; see contact information below.
- MassTransit hardware key also known as a “dongle” -- note that if you are running on Mac OS X or Mac OS X Server, a USB dongle is required.

Please contact Group Logic Technical Support if you need to obtain these. Email [support@grouplogic.com](mailto:support@grouplogic.com) or call 703-527-7979. For a complete listing of the latest official release versions and documentation, go to <http://www.grouplogic.com/files/glidownload/mtreleases.cfm>.

### Upgrading Process

This document includes details on how to install MySQL and MassTransit 5.1. You should not launch MassTransit until you have completed all of the processes outlined in this document.

The upgrading process is a series of major steps:

1. Backing up your existing installation
2. Upgrading your databases to the latest version of MassTransit (4.5 upgrades only)
3. Migrating your configurations to the new MassTransit installation
4. Verifying the success of the new installation

If you encounter problems during this process, please contact Group Logic Technical Support at [support@grouplogic.com](mailto:support@grouplogic.com) or 703-527-7979. It is highly recommended that you back up your original MassTransit application folder so that if you encounter problems, you can still run from the backup until support can resolve the issue.

## **Making a Backup Before Upgrading**

Before upgrading your existing MassTransit installation to a new version it is advisable to make a backup. You will need to select a backup location for MassTransit, e.g. a different folder on the same volume, a network volume, a CD, etc. It is highly recommended that you make backups immediately before you upgrade and do not run the older version of MassTransit again to ensure that the transition between the two servers is seamless.

Perform the following steps to make a backup copy of the MassTransit application folder:

1. If MassTransit is currently running, quit the application.
2. Locate the folder that contains the old MassTransit application.
3. Copy the entire MassTransit application folder to your backup location.
4. If you are upgrading from 4.5, you may also wish to save your current log to text by launching MassTransit, opening the log window, and selecting "Save to text" from the **File** menu.

If you encounter a problem running with the new version of MassTransit, you can revert to this saved application folder until the issue can be resolved.

## Upgrading on Mac OS X

### MassTransit Versions Prior to 4.5

Prior to upgrading to MassTransit 5.1, you will need to upgrade your current version of MassTransit to MassTransit 4.5. To download MassTransit 4.5, go to the MassTransit 4.5 Releases section located at: <http://www.grouplogic.com/files/glidownload/mtreleases.cfm> . This Web site also includes upgrading instructions in the MassTransit 4.5 Documentation section. Once you have successfully upgraded to MassTransit 4.5, you can then upgrade to 5.1; follow the instructions below. If you need assistance upgrading, please contact Group Logic Support at [support@grouplogic.com](mailto:support@grouplogic.com) or call 703-527-7979.

### MassTransit 4.5 to 5.1

To install MassTransit 5.1 on Mac OS X 10.4 client or later, or Mac OS X 10.4 Server or later, you will need to have a USB dongle and a version 5 serial number. ADB dongles are no longer supported. Please contact Group Logic Technical Support if you need to obtain these. Email [support@grouplogic.com](mailto:support@grouplogic.com) or call 703-527-7979.

MassTransit uses a new database format starting in 5.0 and installs to a different installation folder. You should not install to the same directory as your previous MassTransit installation because of this new database format.

### Enterprise and Professional Servers

1. Log into Mac OS X as the user you will be running MassTransit under.
2. Be sure that you have sent all queued files.
3. If MassTransit is currently running, quit the application.
4. Back up your MassTransit application folder; see the "Making a Backup Before Upgrading" section.
5. Verify MySQL is installed and running; see the Installation Guide for Macintosh included on the CD for assistance. Follow the "Installing MySQL" section.
6. Install MassTransit 5.1; see the Installation Guide for Macintosh included on the CD for assistance. Follow the "Installing MassTransit" section.

### Running the Database (DB) Converter

The DB Converter is a tool installed with MassTransit to convert your databases. It will convert all contacts and their associated data, as well as all configuration settings, including listens, actions, services, and priorities. Files and log tables will not be converted. The tool consists of two components: "MT 4.5 DB Export" and "Import 4.5 Data". The former exports your 4.5 databases; the latter imports the converted databases to 5.1. If you're installing MassTransit on a different server, skip to the next section, "Running the DB Converter when 4.5 and 5.1 are on Different Servers".

7. Mount any volumes that MassTransit references because paths to mounted volumes may not be imported properly if the path is not valid when the DB Converter runs. Any volumes that host MassTransit User Mailboxes, MassTransit Hot Folders, or MassTransit Drop Folders should be mounted.
8. Double-click MT 4.5 DB Export located in the following default path: [/Applications/MassTransit Server 5 Folder/DB Converter/45Export](#).
  - a. An introductory window appears; select the **Continue** button to proceed.

- b. The “About The Conversion Process” window appears explaining the conversion that is about to occur. Once you have read the explanation, select **Continue** to proceed.
  - c. The “Choose a Folder” window appears asking for the location of your MassTransit 4.5 application folder. The default installation path is: [/Applications/MassTransit 4.5 Folder](#). Locate the folder and select **Choose** to continue.
  - d. The “Choose a Folder” window appears again asking for the location of your MassTransit 5.1 application folder. The default installation path is: [/Applications/MassTransit Server 5 Folder](#). Locate the folder and select **Choose** to continue.
  - e. An “Export Complete” dialog appears when the export is complete. Select **OK** to continue. The DB Converter Log.txt populates to the DB Converter folder; this log lists everything exported.
9. Double-click the Import 4.5 Data script located in the following default path: [/Applications/MassTransit Server 5 Folder/DB Converter/51Import](#).
- a. The “Choose a Folder” window appears asking for the location of your MassTransit 5.1 application folder. The default installation path is: [/Applications/MassTransit Server 5 Folder](#). Locate the folder and select **Choose** to continue.
  - b. A series of dialogs appear asking for MySQL information:
    - i. Enter the address of your MySQL server: Enter localhost (default). Select **OK** to continue.
    - ii. Enter your MySQL server user name: Use either root (default) or the username you created when you installed MassTransit, i.e. “masstransit”. We recommend using your username; it is more restrictive and safer to use. Select **OK** to continue.
    - iii. Enter your MySQL password and select **OK** to close the dialog.
  - c. A dialog appears informing you that the import of MassTransit 4.5 data is complete. The DB Importer Log.txt populates to the DB Converter folder; this log lists everything imported.
10. Follow the rest of the upgrading instructions in the “Migrating Configurations” section.

### Running the DB Converter when 4.5 and 5.1 are on Different Machines

If you’re installing MassTransit on a different machine, follow these instructions to convert your databases. Note: The DB Converter only converts Mac -> Mac or Win -> Win; the DB Converter does not support cross-platform conversions.

When you run MT 4.5 DB Export on your MassTransit 4.5 server, a file called MassTransit Data.xml is generated when the conversion completes. You will have to manually move the MassTransit Data.xml file to your MassTransit 5.1 server, run the importer, Import 4.5 Data, and your database conversion will be complete.

1. Follow steps 1-7 as listed above.
2. Put MT 4.5 DB Export anywhere on the MassTransit 4.5 server. MT 4.5 DB Export is installed by MassTransit and is located in the following default path: [/Applications/MassTransit Server 5 Folder/DB Converter/45Export](#). It is also included on the CD.
3. Double-click MT 4.5 DB Export.
  - a. An introductory window appears; select the **Continue** button to proceed.
  - b. The “About The Conversion Process” window appears explaining the conversion that is about to occur. Once you have read the explanation, select **Continue** to proceed.
  - c. The “Choose a Folder” window appears asking for the location of your MassTransit 4.5 application folder. The default installation path is: [/Applications/MassTransit 4.5 Folder](#). Locate the folder and select **Choose** to continue.

- d. The “Choose a Folder” window appears again asking for the location of your MassTransit 5.1 application folder. Instead of using the MassTransit 5.1 application folder, you can use any folder. When MT 4.5 DB Export runs, the MassTransit Data.xml file is generated and placed in that folder. This is the file you will manually move to the MassTransit 5.1 server. Locate the folder of your choice and select **Choose** to continue.
- e. An “Export Complete” dialog appears when the export is complete. Select **OK** to continue. The DB Converter Log.txt populates to the DB Converter folder; this log lists everything exported.
4. When the conversion is complete, go to the folder you selected as your MassTransit 5.1 application folder in step 3d and locate the MassTransit Data.xml file.
5. Place the MassTransit Data.xml file in the root MassTransit 5.1 folder. The default path is: [/Applications/MassTransit Server 5 Folder/](#).
6. From the MassTransit 5.1 server, double-click the Import 4.5 Data script located in the following default path: [/Applications/MassTransit Server 5 Folder/DB Converter/51Import](#).
  - a. The “Choose a Folder” window appears asking for the location of your MassTransit 5.1 application folder. The default installation path is: [/Applications/MassTransit Server 5 Folder](#). Locate the folder and select **Choose** to continue.
  - b. A series of dialogs appear asking for MySQL information:
    - i. Enter the address of your MySQL server: Enter localhost (default). Select **OK** to continue.
    - ii. Enter your MySQL server user name: Use either root (default) or the username you created when you installed MassTransit, i.e. “masstransit”. We recommend using your username; it is more restrictive and safer to use. Select **OK** to continue.
    - iii. Enter your MySQL password and select **OK** to close the dialog.
  - c. A dialog appears informing you that the import of MassTransit 4.5 data is complete. The DB Importer Log.txt populates to the 51Import folder; this log lists everything imported.
7. Follow the rest of the upgrading instructions in the “Migrating Configurations” section.

## Satellite Servers

1. Log into Mac OS X as the user you will be running MassTransit under.
2. Be sure that you have sent all queued files.
3. If MassTransit is currently running, quit the application.
4. Back up your MassTransit application folder; see the “Making a Backup Before Upgrading” section.
5. Install MassTransit Satellite 5 included on the MassTransit 5.1 CD. You must use an administrative account when installing MassTransit.
6. Copy your MTClient.CFG file and place it in your MassTransit 5.1 folder.

## Running the DB Converter

The DB Converter is a tool installed with MassTransit to convert your databases. It will convert all contacts and their associated data, as well as all configuration settings, including listens, actions, services, and priorities. Files and log tables will not be converted. The tool consists of two components: “MT 4.5 DB Export” and “Import 4.5 Data Embedded”. The former exports your 4.5 databases; the latter imports the converted databases to 5.1. If you’re installing MassTransit on a different server, skip to the next section, “Running the DB Converter when 4.5 and 5.1 Satellites are on Different Servers”.

7. Mount any volumes that MassTransit references because paths to mounted volumes may not be imported properly if the path is not valid when the DB Converter runs. Any volumes that host

MassTransit User Mailboxes, MassTransit Hot Folders, or MassTransit Drop Folders should be mounted.

8. Double-click MT 4.5 DB Export located in the following default path: [/Applications/MassTransit Satellite 5 Folder/DB Converter/45Export](#).
  - a. An introductory window appears; select the **Continue** button to proceed.
  - b. The “About The Conversion Process” window appears explaining the conversion that is about to occur. Once you have read the explanation, select **Continue** to proceed.
  - c. The “Choose a Folder” window appears asking for the location of your MassTransit 4.5 application folder. The default installation path is: [/Applications/MassTransit 4.5 Folder](#). Locate the folder and select **Choose** to continue.
  - d. The “Choose a Folder” window appears again asking for the location of your MassTransit 5.1 application folder. The default installation path is: [/Applications/MassTransit Satellite 5 Folder](#). Locate the folder and select **Choose** to continue.
  - e. An “Export Complete” dialog appears when the export is complete. Select **OK** to continue. The DB Converter Log.txt populates to the DB Converter folder; this log lists everything exported.
9. Double-click the Import 4.5 Data Embedded script located in the following default path: [/Applications/MassTransit Satellite 5 Folder/DB Converter/51Import](#).
  - a. The “Choose a Folder” window appears asking for the location of your MassTransit 5.1 application folder. The default installation path is: [/Applications/MassTransit Satellite 5 Folder](#). Locate the folder and select **Choose** to continue.
  - b. A dialog appears informing you that the import of MassTransit 4.5 data is complete. The DB Importer Log.txt populates to the DB Converter folder; this log lists everything imported.
10. Follow the rest of the upgrading instructions in the “Migrating Configurations” section.

### Running the DB Converter when 4.5 and 5.1 Satellites are on Different Machines

If you’re installing MassTransit on a different machine, follow these instructions to convert your databases. Note: The DB Converter only converts Mac -> Mac or Win -> Win; the DB Converter does not support cross-platform conversions.

When you run MT 4.5 DB Export on your MassTransit 4.5 Satellite server, a file called MassTransit Data.xml is generated when the conversion completes. You will have to manually move the MassTransit Data.xml file to your MassTransit 5.1 Satellite server, run the importer, Import 4.5 Data Embedded, and your database conversion will be complete.

1. Follow steps 1-7 as listed above.
2. Put MT 4.5 DB Export anywhere on the MassTransit 4.5 Satellite server. MT 4.5 DB Export is installed by MassTransit and is located in the following default path: [/Applications/MassTransit Satellite 5 Folder/DB Converter/45Export](#). It is also included on the CD.
3. Double-click MT 4.5 DB Export.
  - a. An introductory window appears; select the **Continue** button to proceed.
  - b. The “About The Conversion Process” window appears explaining the conversion that is about to occur. Once you have read the explanation, select **Continue** to proceed.
  - c. The “Choose a Folder” window appears asking for the location of your MassTransit 4.5 application folder. The default installation path is: [/Applications/MassTransit 4.5 Folder](#). Locate the folder and select **Choose** to continue.
  - d. The “Choose a Folder” window appears again asking for the location of your MassTransit 5.1 application folder. Instead of using the MassTransit 5.1 application folder, you can use any folder. When MT 4.5 DB Export runs, the MassTransit Data.xml

- file is generated and placed in that folder. This is the file you will manually move to the MassTransit 5.1 Satellite server. Locate the folder of your choice and select **Choose** to continue.
- e. An “Export Complete” dialog appears when the export is complete. Select **OK** to continue. The DB Converter Log.txt populates to the DB Converter folder; this log lists everything exported.
4. When the conversion is complete, go to the folder you selected as your MassTransit 5.1 application folder in step 3d and locate the MassTransit Data.xml file.
  5. Place the MassTransit Data.xml file in the root MassTransit 5.1 folder. The default path is: [/Applications/MassTransit Satellite 5 Folder/](#).
  6. From the MassTransit 5.1 Satellite server, double-click the Import 4.5 Data Embedded script located in the following default path: [/Applications/MassTransit Satellite 5 Folder/DB Converter/51Import](#).
    - a. The “Choose a Folder” window appears asking for the location of your MassTransit 5.1 application folder. The default installation path is: [/Applications/MassTransit Satellite 5 Folder](#). Locate the folder and select **Choose** to continue.
    - b. A dialog appears informing you that the import of MassTransit 4.5 data is complete. The DB Importer Log.txt populates to the 51Import folder; this log lists everything imported.
  7. Follow the rest of the upgrading instructions in the “Migrating Configurations” section.

## Application Clients

The DB Converter does not upgrade Clients. Follow the below instructions to manually upgrade your Client.

1. Log into Mac OS X as the user you will be running MassTransit under.
2. Be sure that you have sent all queued files.
3. If MassTransit is currently running, quit the application.
4. Locate your backup of the MassTransit application folder; see the “Making a Backup Before Upgrading” section.
5. Install MassTransit Client 5 included on the MassTransit 5.1 CD. You must use an administrative account when installing the MassTransit Client.
6. Copy your MTClient.CFG file and place it in your MassTransit 5.1 folder.
7. Any customizations you have made outside the MTClient.CFG, like your communication methods, will need to be manually reconfigured.
8. Follow the rest of the upgrading instructions in the “Migrating Configurations” section.

## Migrating Configurations

The following sections detail how to ensure that all configurations are properly migrated from your old MassTransit installation to your new one. If you installed MassTransit to the default location, the new installation folder will be: [/Applications/MassTransit Server 5 Folder](#)

### Copying User Mailboxes

Copy your User Mailboxes folder from the backup of your old MassTransit Folder to the new MassTransit Folder. If you choose not to do this, MassTransit will create a new User Mailboxes folder when it starts up.

**If you are running on Mac OS X and share the user mailboxes**, copy the contents of the old “User Mailboxes” folder from your previous installation to the “User Mailboxes” folder in the new MassTransit folder. If you want to make the mailboxes available to all users, run the “Set User Mailbox Permissions”

script, available on the Group Logic website:

<http://www.grouplogic.com/files/mt/scripts/mac/SetUserMailboxPermissions.hqx>

## Maintaining Verified Certificates

If you are using a verified certificate [e.g. one purchased from VeriSign], you may need to ensure that the certificate and private key files are configured properly for the new version of MassTransit.

If the certificate and/or private key files were located in the “Security” folder of your previous MassTransit installation you will need to move them to the “Security” folder of the new MassTransit installation. In addition, when you restart MassTransit, go to **Setup->Security** to update the preferences to access the files at their new location. If you’re using verified SSL certificates, the `mtcert.pem` (located in the Security folder) and `mtkey.pem` (located in the private folder) files must be manually moved from the backed up Security folder into the 5.1 Security folder.

On Windows, if the certificate and/or private key files were *not* located within the previous MassTransit installation folder then no action is needed as MassTransit will continue to find the files in their present location if you are installing on the same server. If you are not installing MassTransit 5.1 on the same server, then you will need to copy the certificate and/or private key files to the new server.

On Macintosh, no matter where you install MassTransit 5.1, you will need to convert all SSL certificate and key files with Macintosh line endings to Unix line endings. There is a script called, “Convert Certificates to 5.app” that does this in your Extras folder. The default location is:  
`/Applications/MassTransit Server 5 Folder/Extras.`

To run the script:

1. Double-click “Convert Certificates to 5.app”.
2. A dialog appears with buttons asking you to **Convert one file** or to **Convert a folder hierarchy**. If you wish to convert just one certificate or key file, select the **Convert one file** button. If you wish to convert all of your certificate and key files at once and they are in a single folder, select the **Convert a folder hierarchy** button.
3. The “Choose a File” or “Choose a Folder” dialog appears based on your selection. Choose the certificate, key file, or folder hierarchy you want to convert. Select the **Choose** button to continue.
4. A dialog appears informing you that the script has completed successfully. It also tells you to go to your desktop and locate the folder named, “MassTransit 5 Cert”. The converted files or folder hierarchy are in that folder. Select **OK** to close the dialog.
5. Copy the converted files and place them in the appropriate folder. If they were in your Security folder, put the converted files in the MassTransit 5.1 Security folder, or if they were not in your previous MassTransit installation, replace them in that same location. You can overwrite the original files, as they should be saved with your backup.

## Preserving MassTransit.cfg Settings For Enterprise and Professional Servers

If you were using the `MassTransit.cfg` file to specify settings for your previous MassTransit installation, you will need to make equivalent changes in the updated version of the `MassTransit.cfg` file.

DO NOT simply drop your old `MassTransit.cfg` file in the new MassTransit directory. Some changes may have been made to the settings in this file and using the newest version ensures proper operation.

1. Copy the new version of the `MassTransit.cfg` file from the Extras folder of the new MassTransit installation to the main MassTransit folder.
2. Open the new `MassTransit.cfg` file that you just moved in a text editor.
3. Open the `MassTransit.cfg` file that you backed up from your old installation in a text editor.
4. For each enabled setting in your old `MassTransit.cfg` file, uncomment the same setting and set the value appropriately in the new `MassTransit.cfg` file. Settings with a '%' preceding them are not enabled.
5. Save the new `MassTransit.cfg` file.

### **Maintaining MT IP Addresses.txt**

If you were using `MT IP Addresses.txt` on your previous MassTransit installation, copy the `MT IP Addresses.txt` file that you backed up into the new MassTransit folder. No changes to the actual file are required.

### **Consider Updating Aliases and Shortcuts**

If you have an alias or shortcut that you used to launch the previous version of MassTransit, you may want to update it to point to the new version. This is especially important if you have one as a startup item, to ensure that the old version of MassTransit is not launched automatically.

### **Web Configuration for Enterprise Servers Only**

Starting with MassTransit 5.0 there is a new Web site for web client configuration. For information about configuring MassTransit for use with web servers, see the Web Configuration Instructions document located on the MassTransit Latest Releases web page in the MassTransit 5.1 Documentation section: <http://www.grouplogic.com/files/glidownload/mtreleases.cfm>.

### **Other MassTransit 5.1 Resources**

Go to <http://www.grouplogic.com/files/mt/51/OtherMassTransit51Resources.html> for additional articles to help you set up, configure, and use MassTransit 5.1 and its new features. The [Group Logic Knowledge Base](#) contains many articles that provide detailed information on MassTransit 5.1 and its features and components. The HTML version of this file, "OtherMassTransit51Resources.html", is provided with your MassTransit 5.1 CD or with your download package.

## **MassTransit 5.0 to 5.1**

When upgrading your Enterprise, Professional, Satellite, or Client server to MassTransit 5.1 from MassTransit 5.0, it is not necessary to run the DB Converter application.

### **Enterprise and Professional Servers**

1. Log into Mac OS X as the user you will be running MassTransit under.
2. If MassTransit is currently running, quit the application.
3. Verify that MySQL is running.
4. Back up your MassTransit application folder; see the “Making a Backup Before Upgrading” section.
5. Run **Install MassTransit Server 5** from the MassTransit 5.1 CD to install MassTransit 5.1.
  - During the installation process, the Enterprise installer gives you the option of backing up the MassTransitEngine.cfg file and the entire MTWeb folder. Select **OK** to back up your custom configuration.
  - During the installation, a dialog appears asking if you would like to share the MassTransit User Mailboxes Folder with File Sharing. You may select **Yes** or **No**. If you select **Yes**, the User Mailboxes folder will be shared via standard Mac OS X file sharing so remote users can connect and view the mailboxes. If you select **No** the installer will NOT change the permissions of the existing User Mailboxes folder. It will be fully accessible locally and you can later change the permissions manually.
6. Follow the rest of the upgrading instructions in the “Migrating Configurations” section.

### **Satellite Servers**

1. Log into Mac OS X as the user you will be running MassTransit under.
2. If MassTransit is currently running, quit the application.
3. Back up your MassTransit application folder; see the “Making a Backup Before Upgrading” section.
4. Install MassTransit Satellite 5.1 included on the MassTransit 5.1 CD. You must use an administrative account when installing MassTransit.
5. Copy your MTClient.CFG file and place it in your MassTransit 5.1 folder.
6. Copy the data folder from your backed up Satellite Databases folder into your 5.1 Databases folder.
7. Follow the rest of the upgrading instructions in the “Migrating Configurations” section.

### **Application Clients**

1. Log into Mac OS X as the user you will be running MassTransit under.
2. If MassTransit is currently running, quit the application.
3. Locate your backup of the MassTransit application folder; see the “Making a Backup Before Upgrading” section.
4. Install MassTransit Client 5.1 included on the MassTransit 5.1 CD. You must use an administrative account when installing the MassTransit Client.
5. Copy your MTClient.CFG file and place it in your MassTransit 5.1 folder.
6. Any customizations you have made outside the MTClient.CFG, like your communication methods, will need to be manually reconfigured.
7. Follow the rest of the upgrading instructions in the “Migrating Configurations” section.

## Migrating Configurations

The following sections detail how to ensure that all configurations are properly migrated from your old MassTransit installation to your new one. If you installed MassTransit to the default location, the new installation folder will be: `/Applications/MassTransit Server 5 Folder`

### Preserving MassTransit.cfg Settings For Enterprise, Professional, and Satellite Servers

If you were using the `MassTransit.cfg` file to specify settings for your previous MassTransit installation, you will need to make equivalent changes in the updated version of the `MassTransit.cfg` file.

DO NOT simply drop your old `MassTransit.cfg` file in the new MassTransit directory. Some changes may have been made to the settings in this file and using the newest version ensures proper operation.

1. Copy the new version of the `MassTransit.cfg` file from the Extras folder of the new MassTransit installation to the main MassTransit folder.
2. Open the new `MassTransit.cfg` file that you just moved in a text editor.
3. Open the `MassTransit.cfg` file that you backed up from your old installation in a text editor.
4. For each enabled setting in your old `MassTransit.cfg` file, uncomment the same setting and set the value appropriately in the new `MassTransit.cfg` file. Settings with a '%' preceding them are not enabled.
5. Save the new `MassTransit.cfg` file.

### Preserving MassTransitEngine.cfg Settings For Enterprise and Professional Servers

If you were using the `MassTransitEngine.cfg` file to specify settings for your previous MassTransit installation, you will need to make equivalent changes in the updated version of the `MassTransitEngine.cfg` file.

DO NOT simply drop your old `MassTransitEngine.cfg` file in the new MassTransit directory. Some changes may have been made to the settings in this file and using the newest version ensures proper operation.

1. The new version of the `MassTransitEngine.cfg` file is installed by default in the main MassTransit folder.
2. Open the new `MassTransitEngine.cfg` file in a text editor.
3. Open the `MassTransitEngine.cfg` file that you backed up from your old installation in a text editor.  
Note: If you opted to backup the `MassTransitEngine.cfg` during the installation, the file exists in your main MassTransit folder and is named: `MassTransitEngine.cfg.bak`.
4. For each enabled setting in your old `MassTransitEngine.cfg` file, uncomment the same setting and set the value appropriately in the new `MassTransitEngine.cfg` file. Settings with a '%' preceding them are not enabled.
5. Save the new `MassTransitEngine.cfg` file.

## Web Configuration for Enterprise Servers Only

If you are using the MassTransit web interface, you will need to update your web configuration settings. Please follow the instructions in the "Upgrading an Existing MTWeb 5.0.x Installation to MTWeb 5.1"

section of the Web Configuration Instructions document located on the MassTransit Latest Releases web page in the MassTransit 5.1 Documentation section:

<http://www.grouplogic.com/files/glidownload/mtreleases.cfm> .

## **Other MassTransit 5.1 Resources**

MassTransit 5.1 supports MySQL 5.0. MySQL 5.0 offers improved stability and performance and will be required for MassTransit versions 5.2 and later. If you would like to upgrade your MySQL database to 5.0.42, follow the instructions in the Knowledge Base article located at:

[http://www.grouplogic.com/knowledge/index.cfm/fuseaction/view\\_Info/docID/284](http://www.grouplogic.com/knowledge/index.cfm/fuseaction/view_Info/docID/284) . This article provides instructions on backing up your existing MySQL database.

Note: If you do not wish to use MySQL 5, MassTransit 5.1 is still compatible with MySQL 4.1.21. To back up your MySQL4 database, follow the instructions in the Knowledge Base article located at:

<http://www.grouplogic.com/knowledge/index.cfm/fuseaction/view/docID/243> .

For additional information on how to set up, configure, and use MassTransit 5.1 and its new features, go to <http://www.grouplogic.com/files/mt/51/OtherMassTransit51Resources.html>. The [Group Logic Knowledge Base](#) contains many articles that provide detailed information on MassTransit 5.1 and its features and components. The HTML version of this file, "OtherMassTransit51Resources.html", is provided with your MassTransit 5.1 CD.

## Upgrading on Windows

### MassTransit Versions Prior to 4.5

Prior to upgrading to MassTransit 5.1, you will need to upgrade your current version of MassTransit to MassTransit 4.5. To download MassTransit 4.5, go to the MassTransit 4.5 Releases section located at: <http://www.grouplogic.com/files/glidownload/mtreleases.cfm> . This Web site also includes upgrading instructions in the MassTransit 4.5 Documentation section. Once you have successfully upgraded to MassTransit 4.5, you can then upgrade to 5.1; follow the instructions below. If you need assistance upgrading, please contact Group Logic Support at [support@grouplogic.com](mailto:support@grouplogic.com) or call 703-527-7979.

### MassTransit 4.5 to 5.1

To install MassTransit 5.1 on Windows 2000 [SP4] Server or Professional, Windows 2003, or Windows XP Professional, you will need to have a USB or parallel port hardware key and a version 5 serial number. Please contact Group Logic Technical Support if you need to obtain these. Email [support@grouplogic.com](mailto:support@grouplogic.com) or call 703-527-7979.

### Enterprise and Professional Servers

1. Be sure that you have sent all queued files.
2. If MassTransit is currently running stop the service.
3. Back up your MassTransit application folder; see the “Making A Backup Before Upgrading” section.
4. Verify MySQL is installed and running as a service; see the Installation Guide for Windows included on the CD for assistance. Follow the “Installing MySQL” section.
5. Install MassTransit 5.1; see the Installation Guide for Windows included on the CD for assistance. Follow the “Installing MassTransit” section.

### Running the Database (DB) Converter

The DB Converter is a tool installed with MassTransit to convert your databases. It will convert all contacts and their associated data, as well as all configuration settings, including listens, actions, services, and priorities. Files and log tables will not be converted. The tool consists of two components: the 4.5 exporter, “MT 4.5 DB Export.exe” and the 5.1 importer, “Import 4.5 Data.vbs”. The former exports your 4.5 databases; the latter imports the converted databases to 5.1. If you’re installing MassTransit on a different server, skip to the next section, “Running the DB Converter when 4.5 and 5.1 are on Different Servers”.

6. Double-click the MT 4.5 DB Export.exe located in the following default path: <C:\Program Files\Group Logic\MassTransit Server 5\DB Converter\45Export>.
  - a. An introductory window appears; select the **Next** button to continue.
  - b. An explanation window appears explaining the conversion that is about to occur. Once you have read the explanation, select **Next** to continue.
  - c. The next window requires the locations of your MassTransit 4.5 and MassTransit 5.1 application folders.
    - i. To locate your 4.5 application folder, select **Browse...** and the “Browse for Folder” dialog opens. The default installation path is <C:\Program Files\MassTransit>. Locate the folder and select **OK** to close the dialog.

- ii. To locate your 5.1 application folder, select **Browse...** and the “Browse for Folder” dialog opens. The default installation path is [C:\Program Files\Group Logic\MassTransit Server 5](#). Locate the folder and select **OK** to close the dialog.
    - iii. Select the **Finish** button to complete the conversion.
  - d. When the conversion is complete, the DB Converter Log.txt populates to the DB Converter folder. This log lists everything converted.
7. Double-click the Import 4.5 Data.vbs script located in the following default path: [C:\Program Files\Group Logic\MassTransit Server 5\DB Converter\51Import](#).
  - a. A “Browse For Folder” dialog appears. Select the MassTransit 5 folder; the default path is [C:\Program Files\Group Logic\MassTransit Server 5](#). Select **OK** to continue.
  - b. A series of dialogs appear asking for MySQL information:
    - i. Enter your MySQL server address: Enter localhost (default). Select **OK** to continue.
    - ii. Enter your MySQL server user name: Use either root (default) or the username you created when you installed MassTransit, i.e. “masstransit”. We recommend using your username; it is more restrictive and safer to use. Select **OK** to continue.
    - iii. Enter your MySQL server password and select **OK** to continue.
  - c. When the import completes, a terminal window appears for just a moment and the DB Importer Log.txt populates to the DB Converter folder. This log lists everything imported.
8. Follow the rest of the upgrading instructions in the “Migrating Configurations” section.

### Running the DB Converter when 4.5 and 5.1 are on Different Machines

If you’re installing MassTransit on a different machine, follow these instructions to convert your databases. Note: The DB Converter only converts Mac -> Mac or Win -> Win; the DB Converter does not support cross-platform conversions.

When you run the MT 4.5 DB Export.exe on your MassTransit 4.5 server, a file called MassTransit Data.xml is generated when the conversion completes. You will have to manually move the MassTransit Data.xml file to your MassTransit 5.1 server, run the importer, Import 4.5 Data.vbs, and your database conversion will be complete.

1. Follow steps 1-5 as listed above.
2. Put MT 4.5 DB Export.exe anywhere on the MassTransit 4.5 server. MT 4.5 DB Export.exe is installed by MassTransit and is located in the following default path: [C:\Program Files\Group Logic\MassTransit Server 5\DB Converter\45Export](#). It is also included on the CD.
3. Double-click the MT 4.5 DB Export.exe.
  - a. An introductory window appears; select the **Next** button to continue.
  - b. An explanation window appears explaining the conversion that is about to occur. Once you have read the explanation, select **Next** to continue.
  - c. The next window requests the location of two folders: the MassTransit 4.5 application folder and the MassTransit 5.1 application folder. Instead of using the MassTransit 5.1 application folder, you can use any folder. When MT 4.5 DB Export.exe runs, the MassTransit Data.xml file is generated and placed in that folder. This is the file you will manually move to the MassTransit 5.1 server.
    - i. To locate your 4.5 application folder, select **Browse...** and the “Browse for Folder” dialog opens. The default installation path is [C:\Program Files\MassTransit](#). Locate the folder and select **OK** to close the dialog.
    - ii. Instead of your 5.1 application folder, select **Browse...** and select the folder of your choice. Select **OK** to close the dialog.

- iii. Select the **Finish** button to complete the conversion.
  4. When the conversion is complete, go to the folder you selected as your MassTransit 5.1 application folder in step 3.c.ii and locate the MassTransit Data.xml file.
  5. Place the MassTransit Data.xml file in the root MassTransit 5.1 folder. The default path is: [C:\Program Files\Group Logic\MassTransit Server 5\](#).
  6. From the MassTransit 5.1 server, double-click the Import 4.5 Data.vbs script located in the following default path: [C:\Program Files\Group Logic\MassTransit Server 5\DB Converter\51Import](#).
    - a. A “Browse For Folder” dialog appears. Select the MassTransit 5 folder; the default path is [C:\Program Files\Group Logic\MassTransit Server 5](#). Select **OK** to continue.
    - b. A series of dialogs appear asking for MySQL information:
      - i. Enter your MySQL server address: Enter localhost (default). Select **OK** to continue.
      - ii. Enter your MySQL server user name: Use either root (default) or the username you created when you installed MassTransit, i.e. “masstransit”. We recommend using your username; it is more restrictive and safer to use. Select **OK** to continue.
      - iii. Enter your MySQL server password and select **OK** to continue.
    - c. When the import completes, a terminal window appears for just a moment and the DB Importer Log.txt populates to the 51Import folder. This log lists everything imported.
  7. Follow the rest of the upgrading instructions in the “Migrating Configurations” section.

## Satellite Servers

1. Be sure that you have sent all queued files.
2. If MassTransit is currently running, quit the application or stop the service.
3. Back up your MassTransit application folder; see the “Making A Backup Before Upgrading” section.
4. Install InstallMT5Satellite.exe included on the MassTransit 5.1 CD. You must use an administrative account when installing the MassTransit Satellite server.
5. Copy your MTClient.CFG file and place it in your MassTransit 5.1 folder.

## Running the DB Converter

The DB Converter is a tool installed with MassTransit to convert your databases. It will convert all contacts and their associated data, as well as all configuration settings, including listens, actions, services, and priorities. Files and log tables will not be converted. The tool consists of two components: the 4.5 exporter, “MT 4.5 DB Export.exe” and the 5.1 importer, “Import 4.5 Data Embedded.vbs”. The former exports your 4.5 databases; the latter imports the converted databases to 5.1. If you’re installing MassTransit on a different server, skip to the next section, “Running the DB Converter when 4.5 and 5.1 Satellites are on Different Servers”.

6. Double-click the MT 4.5 DB Export.exe located in the following default path: [C:\Program Files\Group Logic\MassTransit Satellite 5\DB Converter\45Export](#).
  - a. An introductory window appears; select the **Next** button to continue.
  - b. An explanation window appears explaining the conversion that is about to occur. Once you have read the explanation, select **Next** to continue.
  - c. The next window requires the locations of your MassTransit 4.5 and MassTransit 5.1 application folders.
    - i. To locate your 4.5 application folder, select **Browse...** and the “Browse for Folder” dialog opens. The default installation path is [C:\Program Files\MassTransit](#). Locate the folder and select **OK** to close the dialog.

- ii. To locate your 5.1 application folder, select **Browse...** and the “Browse for Folder” dialog opens. The default installation path is [C:\Program Files\Group Logic\MassTransit Satellite 5](#). Locate the folder and select **OK** to close the dialog.
    - iii. Select the **Finish** button to complete the conversion.
  - d. When the conversion is complete, the DB Converter Log.txt populates to the DB Converter folder. This log lists everything converted.
7. Double-click the Import 4.5 Data Embedded.vbs script located in the following default path: [C:\Program Files\Group Logic\MassTransit Satellite 5\DB Converter\51Import](#).
  - a. A “Browse For Folder” dialog appears. Select the MassTransit 5 folder; the default path is [C:\Program Files\Group Logic\MassTransit Satellite 5](#). Select **OK** to continue.
  - b. When the import completes, a terminal window appears for just a moment and the DB Importer Log.txt populates to the DB Converter folder. This log lists everything imported.
8. Follow the rest of the upgrading instructions in the “Migrating Configurations” section.

### Running the DB Converter when 4.5 and 5.1 Satellites are on Different Machines

If you’re installing your MassTransit 5.1 Satellite Server on a different machine, follow these instructions to convert your databases. Note: The DB Converter only converts Mac -> Mac or Win -> Win; the DB Converter does not support cross-platform conversions.

When you run MT 4.5 DB Export.exe on your MassTransit 4.5 Satellite server, a file called MassTransit Data.xml is generated when the conversion completes. You will have to manually move the MassTransit Data.xml file to your MassTransit 5.1 Satellite server, run the importer, Import 4.5 Data Embedded.vbs, and your database conversion will be complete.

1. Follow steps 1-5 as listed above.
2. Put MT 4.5 DB Export.exe anywhere on the MassTransit 4.5 Satellite server. MT 4.5 DB Export.exe is installed by MassTransit and is located in the following default path: [C:\Program Files\Group Logic\MassTransit Satellite 5\DB Converter\45Export](#). It is also included on the CD.
3. Double-click the MT 4.5 DB Export.exe.
  - a. An introductory window appears; select the **Next** button to continue.
  - b. An explanation window appears explaining the conversion that is about to occur. Once you have read the explanation, select **Next** to continue.
  - c. The next window requests the location of two folders: the MassTransit 4.5 application folder and the MassTransit 5.1 application folder. Instead of using the MassTransit 5.1 application folder, you can use any folder. When MT 4.5 DB Export.exe runs, the MassTransit Data.xml file is generated and placed in that folder. This is the file you will manually move to the MassTransit 5.1 Satellite server.
    - i. To locate your 4.5 application folder, select **Browse...** and the “Browse for Folder” dialog opens. The default installation path is [C:\Program Files\MassTransit](#). Locate the folder and select **OK** to close the dialog.
    - ii. Instead of your 5.1 application folder, select **Browse...** and select the folder of your choice. Select **OK** to close the dialog.
    - iii. Select the **Finish** button to complete the conversion.
4. When the conversion is complete, go to the folder you selected as your MassTransit 5.1 application folder in step 3.c.ii and locate the MassTransit Data.xml file.
5. Place the MassTransit Data.xml file in the root MassTransit 5.1 Satellite folder. The default path is: [C:\Program Files\Group Logic\MassTransit Satellite 5\.](#)

6. From the MassTransit 5.1 Satellite server, double-click the Import 4.5 Data Embedded.vbs script located in the following default path: `C:\Program Files\Group Logic\MassTransit Satellite 5\DB Converter\51Import`.
  - a. A “Browse For Folder” dialog appears. Select the MassTransit 5 folder; the default path is `C:\Program Files\Group Logic\MassTransit Satellite 5`. Select **OK** to continue.
  - b. A series of dialogs appear asking for MySQL information:
  - c. When the import completes, a terminal window appears for just a moment and the DB Importer Log.txt populates to the 51Import folder. This log lists everything imported.
7. Follow the rest of the upgrading instructions in the “Migrating Configurations” section.

## Application Clients

The DB Converter does not upgrade Clients. Follow the below instructions to manually upgrade your Client.

1. Be sure that you have sent all queued files.
2. If MassTransit is currently running, quit the application.
3. Locate your backup of the MassTransit application folder; see the “Making a Backup Before Upgrading” section.
4. Install InstallMT5Client.exe included on the MassTransit 5.1 CD. You must use an administrative account when installing the MassTransit Client.
5. Copy your MTClient.CFG file and place it in your MassTransit Client 5 folder.
6. Any customizations you have made outside the MTClient.CFG, like your communication methods, will need to be manually reconfigured.
7. Follow the rest of the upgrading instructions in the “Migrating Configurations” section.

## Migrating Configurations

The following sections detail how to ensure that all configurations are properly migrated from your old MassTransit installation to your new one. If you installed MassTransit to the default location, the new installation folder will be: `C:\Program Files\Group Logic\MassTransit Server 5`

### Copying User Mailboxes

Copy your User Mailboxes folder from the backup of your old MassTransit Folder to the new MassTransit Folder. If you choose not to do this, MassTransit will create a new User Mailboxes folder when it starts up.

**If you are running on Mac OS X and share the user mailboxes**, copy the contents of the old “User Mailboxes” folder from your previous installation to the “User Mailboxes” folder in the new MassTransit folder. If you want to make the mailboxes available to all users, run the “Set User Mailbox Permissions” script, available on the Group Logic website:

<http://www.grouplogic.com/files/mt/scripts/mac/SetUserMailboxPermissions.hqx>

## Maintaining Verified Certificates

If you are using a verified certificate [e.g. one purchased from VeriSign], you may need to ensure that the certificate and private key files are configured properly for the new version of MassTransit.

If the certificate and/or private key files were located in the “Security” folder of your previous MassTransit installation you will need to move them to the “Security” folder of the new MassTransit installation. In addition, when you restart MassTransit, go to **Setup->Security** to update the preferences to access the files at their new location. If you’re using verified SSL certificates, the `mtcert.pem` (located in the Security folder) and `mtkey.pem` (located in the private folder) files must be manually moved from the backed up Security folder into the 5.1 Security folder.

On Windows, if the certificate and/or private key files were *not* located within the previous MassTransit installation folder then no action is needed as MassTransit will continue to find the files in their present location if you are installing on the same server. If you are not installing MassTransit 5.1 on the same server, then you will need to copy the certificate and/or private key files to the new server.

On Macintosh, no matter where you install MassTransit 5.1, you will need to convert all SSL certificate and key files with Macintosh line endings to Unix line endings. There is a script called, “Convert Certificates to 5.app” that does this in your Extras folder. The default location is:  
[/Applications/MassTransit Server 5 Folder/Extras.](#)

To run the script:

1. Double-click “Convert Certificates to 5.app”.
2. A dialog appears with buttons asking you to **Convert one file** or to **Convert a folder hierarchy**. If you wish to convert just one certificate or key file, select the **Convert one file** button. If you wish to convert all of your certificate and key files at once and they are in a single folder, select the **Convert a folder hierarchy** button.
3. The “Choose a File” or “Choose a Folder” dialog appears based on your selection. Choose the certificate, key file, or folder hierarchy you want to convert. Select the **Choose** button to continue.
4. A dialog appears informing you that the script has completed successfully. It also tells you to go to your desktop and locate the folder named, “MassTransit 5 Cert”. The converted files or folder hierarchy are in that folder. Select **OK** to close the dialog.
5. Copy the converted files and place them in the appropriate folder. If they were in your Security folder, put the converted files in the MassTransit 5.1 Security folder, or if they were not in your previous MassTransit installation, replace them in that same location. You can overwrite the original files, as they should be saved with your backup.

## Preserving MassTransit.cfg Settings For Enterprise and Professional Servers

If you were using the `MassTransit.cfg` file to specify settings for your previous MassTransit installation, you will need to make equivalent changes in the updated version of the `MassTransit.cfg` file.

DO NOT simply drop your old `MassTransit.cfg` file in the new MassTransit directory. Some changes may have been made to the settings in this file and using the newest version ensures proper operation.

1. Copy the new version of the `MassTransit.cfg` file from the Extras folder of the new MassTransit installation to the main MassTransit folder.
2. Open the new `MassTransit.cfg` file that you just moved in a text editor.
3. Open the `MassTransit.cfg` file that you backed up from your old installation in a text editor.

4. For each enabled setting in your old `MassTransit.cfg` file, uncomment the same setting and set the value appropriately in the new `MassTransit.cfg` file. Settings with a '%' preceding them are not enabled.
5. Save the new `MassTransit.cfg` file.

### **Maintaining MT IP Addresses.txt**

If you were using `MT IP Addresses.txt` on your previous MassTransit installation, copy the `MT IP Addresses.txt` file that you backed up into the new MassTransit folder. No changes to the actual file are required.

### **Consider Updating Aliases and Shortcuts**

If you have an alias or shortcut that you used to launch the previous version of MassTransit, you may want to update it to point to the new version. This is especially important if you have one as a startup item, to ensure that the old version of MassTransit is not launched automatically.

### **Web Configuration for Enterprise Servers Only**

Starting with MassTransit 5.0 there is a new Web site for web client configuration. For information about configuring MassTransit for use with web servers, see the Web Configuration Instructions document located on the MassTransit Latest Releases web page in the MassTransit 5.1 Documentation section: <http://www.grouplogic.com/files/glidownload/mtreleases.cfm>.

### **Other MassTransit 5.1 Resources**

Go to <http://www.grouplogic.com/files/mt/51/OtherMassTransit51Resources.html> for additional articles to help you set up, configure, and use MassTransit 5.1 and its new features. The [Group Logic Knowledge Base](#) contains many articles that provide detailed information on MassTransit 5.1 and its features and components. The HTML version of this file, "OtherMassTransit51Resources.html", is provided with your MassTransit 5.1 CD or with your download package.

## **MassTransit 5.0 to 5.1**

When upgrading your Enterprise, Professional, Client, or Satellite server to MassTransit 5.1 from MassTransit 5.0, it is not necessary to run the DB Converter application.

### **Enterprise and Professional Servers**

1. If MassTransit is currently running, stop the service.
2. Back up your MassTransit application folder; see the “Making A Backup Before Upgrading” section.
3. Verify MySQL is running.
4. Run InstallMT5Server.exe to install MassTransit 5.1.  
Note: During the installation process, the Enterprise installer will give you the option of backing up the MassTransitEngine.cfg file and the entire MTWeb folder. Select **OK** to ensure your configurations are backed up.
5. Follow the rest of the upgrading instructions in the “Migrating Configurations” section.

### **Satellite Servers**

1. If MassTransit is currently running, quit the application or stop the service.
2. Back up your MassTransit application folder; see the “Making A Backup Before Upgrading” section.
3. Install InstallMT5Satellite.exe included on the MassTransit 5.1 CD. You must use an administrative account when installing the MassTransit Satellite server.
4. Copy your MTClient.CFG file and place it in your MassTransit 5.1 folder.
5. Copy the data folder from your backed up Satellite Databases folder into your 5.1 Databases folder.
6. Follow the rest of the upgrading instructions in the “Migrating Configurations” section.

### **Application Clients**

1. If MassTransit is currently running, quit the application.
2. Backup your MassTransit application folder; see the “Making a Backup Before Upgrading” section.
3. Install InstallMT5Client.exe included on the MassTransit 5.1 CD. You must use an administrative account when installing the MassTransit Client.
4. Copy your MTClient.CFG file and place it in your MassTransit Client 5 folder.
5. Any customizations you have made outside the MTClient.CFG, like your communication methods, will need to be manually reconfigured.
6. Follow the rest of the upgrading instructions in the “Migrating Configurations” section.

### **Migrating Configurations**

The following sections detail how to ensure that all configurations are properly migrated from your old MassTransit installation to your new one. If you installed MassTransit to the default location, the new installation folder will be: `C:\Program Files\Group Logic\MassTransit Server 5`

### **Preserving MassTransit.cfg Settings For Enterprise and Professional Servers**

If you were using the `MassTransit.cfg` file to specify settings for your previous MassTransit installation, you will need to make equivalent changes in the updated version of the `MassTransit.cfg` file.

DO NOT simply drop your old `MassTransit.cfg` file in the new MassTransit directory. Some changes may have been made to the settings in this file and using the newest version ensures proper operation.

1. Copy the new version of the `MassTransit.cfg` file from the Extras folder of the new MassTransit installation to the main MassTransit folder.
2. Open the new `MassTransit.cfg` file that you just moved in a text editor.
3. Open the `MassTransit.cfg` file that you backed up from your old installation in a text editor.
4. For each enabled setting in your old `MassTransit.cfg` file, uncomment the same setting and set the value appropriately in the new `MassTransit.cfg` file. Settings with a '%' preceding them are not enabled.
5. Save the new `MassTransit.cfg` file.

### Preserving MassTransitEngine.cfg Settings For Enterprise and Professional Servers

If you were using the `MassTransitEngine.cfg` file to specify settings for your previous MassTransit installation, you will need to make equivalent changes in the updated version of the `MassTransitEngine.cfg` file.

DO NOT simply drop your old `MassTransitEngine.cfg` file in the new MassTransit directory. Some changes may have been made to the settings in this file and using the newest version ensures proper operation.

1. The new version of the `MassTransitEngine.cfg` file is installed by default in the main MassTransit folder.
2. Open the new `MassTransitEngine.cfg` file in a text editor.
3. Open the `MassTransitEngine.cfg` file that you backed up from your old installation in a text editor.  
Note: The `MassTransitEngine.cfg` was backed up during the installation; the file exists in your main MassTransit folder and is named:  
`MassTransitEngine.cfg.[datestamp].[timestamp].bak.`
4. For each enabled setting in your old `MassTransitEngine.cfg` file, uncomment the same setting and set the value appropriately in the new `MassTransitEngine.cfg` file. Settings with a '%' preceding them are not enabled.
5. Save the new `MassTransitEngine.cfg` file.

## Web Configuration for Enterprise Servers Only

If you are using the MassTransit web interface, you will need to update your web configuration settings. Please follow the instructions in the “Upgrading an Existing MTWeb 5.0.x Installation to MTWeb 5.1” section of the Web Configuration Instructions document located on the MassTransit Latest Releases web page in the MassTransit 5.1 Documentation section:

<http://www.grouplogic.com/files/glidownload/mtreleases.cfm> .

## Other MassTransit 5.1 Resources

MassTransit 5.1 supports MySQL 5.0. MySQL 5.0 offers improved stability and performance and will be required for MassTransit versions 5.2 and later. If you would like to upgrade your MySQL database to 5.0.42, follow the instructions in the Knowledge Base article located at:

[http://www.grouplogic.com/knowledge/index.cfm/fuseaction/view\\_Info/docID/284](http://www.grouplogic.com/knowledge/index.cfm/fuseaction/view_Info/docID/284) . This article provides instructions on backing up your existing MySQL database.

Note: If you do not wish to use MySQL 5, MassTransit 5.1 is still compatible with MySQL 4.1.21. To back up your MySQL4 database, follow the instructions in the Knowledge Base article located at:

<http://www.grouplogic.com/knowledge/index.cfm/fuseaction/view/docID/243> .

Go to <http://www.grouplogic.com/files/mt/51/OtherMassTransit51Resources.html> for additional articles to help you set up, configure, and use MassTransit 5.1 and its new features. The [Group Logic Knowledge Base](#) contains many articles that provide detailed information on MassTransit 5.1 and its features and components. The HTML version of this file, “OtherMassTransit51Resources.html”, is provided with your MassTransit 5.1 CD or with your download package.

## Verifying the Upgrade

Once you have completed all the upgrade steps, you can launch MassTransit.

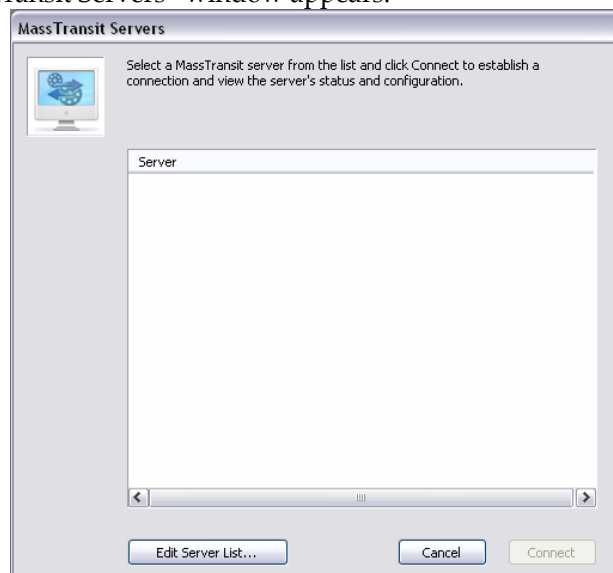
### Mac OS X

#### Launching the MassTransit Engine

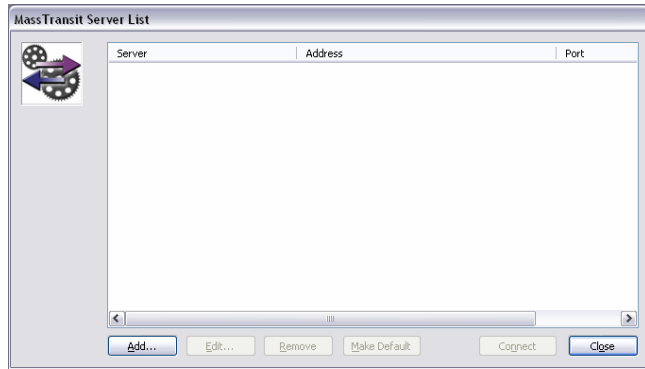
Double click the MassTransit Engine application located in the root MassTransit folder; the default location is `/Applications/MassTransit Server 5 Folder/`. The MassTransit Engine icon appears on the dock and remains there while running. You may want to make an alias of this program on the desktop or dock.

#### Launching the MassTransit Administrator

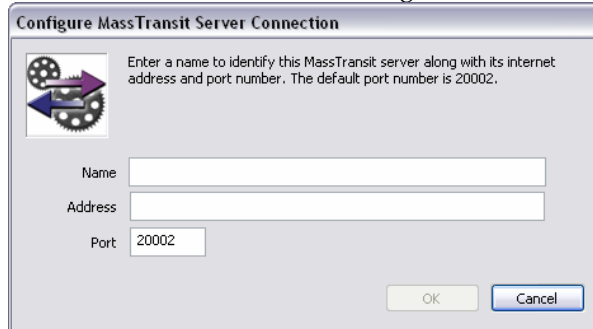
1. Double click the MassTransit Administrator application located in the root MassTransit folder; the default location is `/Applications/MassTransit Server 5 Folder/`. The splash screen appears for a moment and then the MassTransit Administrator icon appears on the dock and remains there while running.
2. To connect to your MassTransit server, go to the **File** Menu and select **Connect to Server**; the “MassTransit Servers” window appears.



3. Add the server you wish to connect to:
  - a. Select the **Edit Server List...** button; the “MassTransit Server List” appears.



- b. Select the **Add** button; the “Configure MassTransit Server Connection” dialog appears.



- c. Add the name and address of the server you are connecting to; all fields are required. If Remote Administration is enabled and you are connecting to a remote server, enter that machine’s information.
- i. Enter the server **Name** (or localhost if you are connecting locally); this is just a name to identify the server you’re connecting to.
  - ii. Enter the server IP **Address** or DNS name (or localhost if you are connecting locally).
  - iii. Enter the **Port**. Use 20002 (the default) unless the MassTransit server has been configured to use a different port.
- d. Select **OK** to continue.
4. After selecting **OK** you return to the “MassTransit Server List” window and see the server you just created.
  5. To connect, highlight the server entry and select **Connect**. Note: You will be able to connect to the server only when the Engine is running, otherwise a dialog will appear stating that a connection cannot be made to the server.
  6. On connection, the “MassTransit” toolbar appears with the following buttons: **Contacts**, **Status**, **Files**, **Log**, and **Setup**. Click any button to go to the corresponding window.

### Shutting Down the MassTransit Administrator

To disconnect from the server only, go to the **File** menu and select **Disconnect From Server**. This will not shut down the Administrator. To exit the MassTransit Administrator go the **MassTransit Administrator** menu and select **Quit MassTransit Administrator**. If you are currently connected to a server, you will be disconnected before the Administrator quits.

### Shutting Down the MassTransit Engine

To shut down the MassTransit Engine, select the MassTransit Engine from the dock, go the **MassTransit Engine** menu and select **Quit MassTransit Engine**.

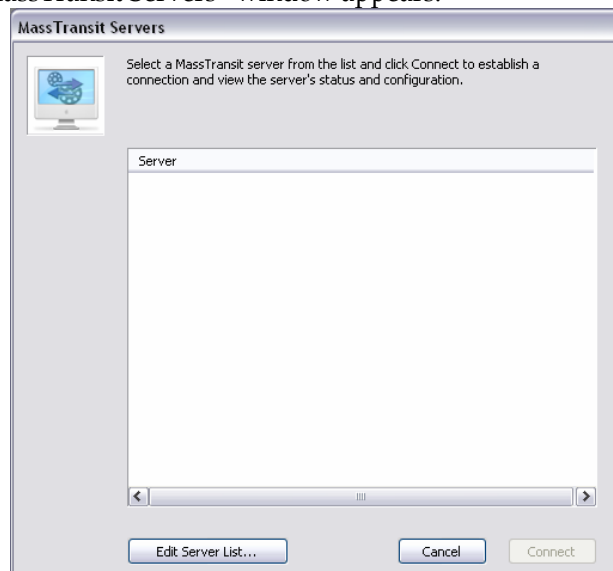
## Windows

### Launching the MassTransit Engine

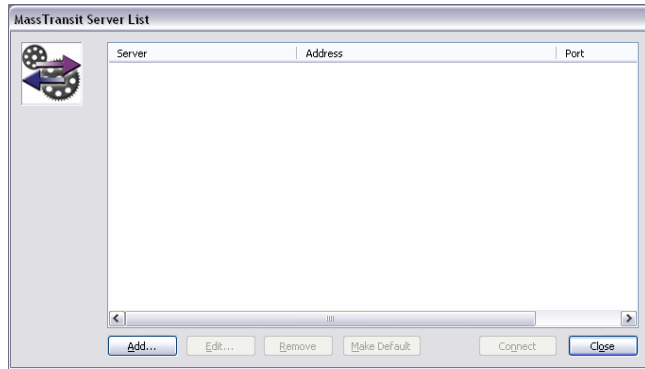
1. The MassTransit Engine must be started via the Services Control Panel. To access the Services Control Panel, go to Start -> Programs -> Administrative Tools -> Services.
2. Once the Services window is open, highlight the service named "MassTransit" and select the **Start Service** button. Note: This will not conflict with the 4.5 Service named, "MassTransit Service", but the two cannot run simultaneously.
3. The default startup type for the MassTransit service is Automatic, thus anytime your machine reboots, the MassTransit service automatically starts. Note: MassTransit is dependent upon MySQL and will fail if MySQL is not started. Make sure MySQL is set to start automatically. If you find that MassTransit is attempting to start before MySQL is ready, you can modify the options in the Recovery tab of the MassTransit service to have it retry.
4. If you would like the MassTransit Engine service to access network volumes, do the following:
  - a. Go to the Services window via Start -> Programs -> Administrative Tools -> Services. Highlight the MassTransit service, right click, and select **Properties** to open the "Properties" window.
  - b. Go to the Log On tab and select the **This account:** option.
    - i. Select the **Browse** button to browse for your valid domain user that has access to the volumes needed.
    - ii. Enter and confirm your password.
    - iii. Select OK to finish and close the "Properties" window.

### Launching the MassTransit Administrator

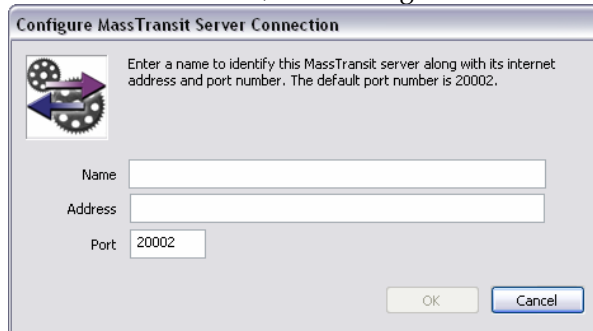
1. Double click the MassTransit Administrator.exe located in the root MassTransit folder to connect to your MassTransit server; the default location is [C:\Program Files\Group Logic\MassTransit Server 5](#).
2. The "MassTransit Servers" window appears.



3. Add the server you wish to connect to:
  - a. Select the **Edit Server List...** button; the "MassTransit Server List" appears.



- b. Select the **Add** button; the “Configure MassTransit Server Connection” dialog appears.



- c. Add the name and address of the server you are connecting to; all fields are required. If Remote Administration is enabled and you are connecting to a remote server, enter that machine’s information.
- i. Enter the server **Name** (or localhost if you are connecting locally); this is just a name to identify the server you’re connecting to.
  - ii. Enter the server IP **Address** or DNS name (or localhost if you are connecting locally).
  - iii. Enter the **Port**. Use 20002 (the default) unless the MassTransit server has been configured to use a different port.
- d. Select **OK** to continue.
4. After selecting **OK** you return to the “MassTransit Server List” window and see the server you just created.
  5. To connect, highlight the server entry and select **Connect**. Note: You will be able to connect to the server only when the Engine is running, otherwise a dialog will appear stating that a connection cannot be made to the server.
  6. The “MassTransit” window appears with a toolbar of the following buttons: **Contacts**, **Status**, **Files**, **Log**, and **Setup**. Click any button to go to the corresponding window.

### Shutting Down the MassTransit Administrator

To disconnect from the server only, go to the **File** menu and select **Disconnect From Server**. To exit the MassTransit Administrator, go the **File** menu and select **Exit**.

### Shutting Down the MassTransit Engine

To shut down the MassTransit Engine, open the Services Control Panel, select the MassTransit service, and select the **Stop Service** button.

## **Verifying Connectivity**

To ensure that MassTransit can properly connect following the upgrade, attempt outgoing calls to server entries and verify that you can receive incoming calls.

On Macintosh, if you are running MassTransit as a non-root user and want to listen below port 1024, you will need to configure Xinetd. Please see Appendix A for more details.

## **Verifying the Web Configuration for Enterprise Servers only**

To ensure that your web configuration is functional, verify that you can login to the MassTransit Web site, upload and download files. It is advisable to do this from both inside and outside the firewall (if relevant) and with all user platforms (Macintosh and Windows), as there are slight differences in configuration that need verification.

## **Other MassTransit 5.1 Resources**

Go to <http://www.grouplogic.com/files/mt/51/OtherMassTransit51Resources.html> for additional articles to help you set up, configure, and use MassTransit 5.1 and its new features. The [Group Logic Knowledge Base](#) contains many articles that provide detailed information on MassTransit 5.1 and its features and components. The HTML version of this file, "OtherMassTransit51Resources.html", is provided with your MassTransit 5.1 CD or with your download package.

© 1995-2008 Group Logic Incorporated. All Rights Reserved.

## **Appendix A: Configuring Xinetd when not running as Root**

In Mac OS X, only the root user has access to ports below 1024. Because of this limitation, in order for MassTransit to listen on the standard FTP or TCP/IP Secure ports, MassTransit previously needed to be run with root privileges. In order to avoid this requirement, Xinetd can be used to redirect traffic from one port to another. This allows MassTransit to be configured to listen on a port above 1024, but receive incoming traffic on a port below 1024. For more information, see the Knowledge Base article at: <http://www.grouplogic.com/knowledge/index.cfm/fuseaction/view/docID/172> .