

MassTransit Installation Guide for Enterprise and Professional Servers on Windows

GroupLogic

February 4, 2008

Group Logic, Inc.
1110 North Glebe Road, Suite 450
Arlington, VA 22201
Phone: 703-528-1555 Fax: 703-528-3296
E-mail: info@grouplogic.com
Internet: <http://www.grouplogic.com>

<u>Document Version History</u>	3
<u>Using this Document</u>	4
BEFORE YOU BEGIN	4
SYSTEM REQUIREMENTS	4
<u>MySQL</u>	5
INSTALLING MYSQL	5
<u>MassTransit</u>	7
INSTALLING MASSTRANSIT	7
TROUBLESHOOTING	9
LAUNCHING THE MASSTRANSIT ENGINE	9
SHUTTING DOWN THE MASSTRANSIT ENGINE	10
LAUNCHING THE MASSTRANSIT ADMINISTRATOR	10
SHUTTING DOWN THE MASSTRANSIT ADMINISTRATOR	11
TROUBLESHOOTING	11
<u>Optional MySQL GUI Tools</u>	12
INSTALLING THE MYSQL GUI TOOLS	12
LAUNCHING THE MYSQL ADMINISTRATOR	12
LAUNCHING THE MYSQL QUERY BROWSER	12
<u>Configuring Remote Administration When MassTransit Is Already Installed</u>	14
CONFIGURING REMOTE ADMINISTRATION IN MASSTRANSIT	14
CONFIGURING REMOTE ADMINISTRATION IN MYSQL	14
TROUBLESHOOTING	16
<u>Web Configuration for Enterprise Servers Only</u>	17
<u>Other MassTransit 5.1 Resources</u>	17

Document Version History

Version	Date	Updater	Details
1.0	2006/03/13	CLM	Created.
1.1	2007/01/08	CLM	Updated link to Web Configuration Instructions.
1.2	2007/04/18	JLB	Updated Group Logic Support contact information.
2.0	2007/08/21	CLB	Updated for 5.1.
2.1	2008/02/04	CLB	Updated copyright.

Using this Document

Before You Begin

To install MassTransit 5.1 on Windows 2000 [SP4] Server or Professional, Windows 2003, or Windows XP Professional you will need to have a USB or parallel port hardware key (dongle) and a version 5 serial number. This new serial number is provided with your MassTransit 5.1 CD or with your download package. Please contact Group Logic Support at 703-527-7979 or support@grouplogic.com if you need to obtain either the hardware key or the serial number.

System Requirements

For a complete listing of all system requirements, please see the MassTransit ReadMe. We strongly recommend that you contact the Group Logic MassTransit team to consult with them prior to purchasing or upgrading a system to run MassTransit. Using their expertise in this area, the team can evaluate with you your specific needs and determine the optimal system configuration for use with MassTransit under those conditions.

MySQL

MassTransit utilizes MySQL for its database. Prior to installing MassTransit, you will need to install MySQL 5.0.42; this is also provided on your MassTransit 5.1 CD or with your download package. MassTransit is dependent upon MySQL, so if it is not running, then MassTransit cannot be installed.

Note: If you have an earlier version of MySQL already installed, you must uninstall the old MySQL service and then restart MySQL after you have successfully upgraded to MySQL 5.0.42 to complete the installation. For additional information, go to <http://dev.mysql.com/doc/refman/5.0/en/upgrade.html>.

Installing MySQL

MySQL is a relational database used by MassTransit to store and retrieve data. Follow the below instructions to install and launch MySQL.

1. Unzip the MySQL installation files, mysql-enterprise-5.0.42-win32.zip, located on your CD or with your download package. A directory opens containing the required installer, Setup.exe.
2. To install the MySQL engine, double click Setup.exe.
3. An introduction window appears. Select the **Next** button to proceed.
4. The "License Agreement" window appears. The **Next** button is enabled after you select **I accept the terms in the license agreement**. Read the license and select **Next** to continue or select **Cancel** to cancel the installation.
5. The "Setup Type" window appears. Select the **Typical** setup type and then select the **Next** button.
6. The "Ready to Install the Program" window appears next. Once you have verified that all of the settings are accurate, select the **Install** button.
7. While the installation completes, the "Installing MySQL Server 5.0" window appears.
8. Two "MySQL Enterprise Subscription" windows appear next. You may select **More** for more information or **Next** to continue on both windows.
9. The "Wizard Completed" window appears next. Check the **Configure the MySQL Server now** check box if you would like to configure MySQL to launch when your machine starts up. Select the **Finish** button to proceed.

If you selected the **Configure the MySQL Server now** check box in step 9, follow the below steps to complete your installation.

10. The "MySQL Server Instance Configuration Wizard" then launches; select **Next** to continue.
11. The next window asks you to select a configuration type. Select the **Standard Configuration** and then select **Next** to continue.
12. The next window asks you to set the Windows options:
 - a. Check the checkbox for **Install As Windows Service**.
 - b. Select MySQL for the **Service Name**.
 - c. Check the checkbox for **Launch the MySQL Server automatically**.
 - d. Check the checkbox for **Include Bin Directory in Windows PATH**.
 - e. Select **Next**.
13. The next window asks you to set the Security options:
 - a. Select the **Modify Security Settings** checkbox if you would like to set a password for your root account.
 - i. Enter the root password.
 - ii. Retype the password for verification.
 - iii. Select the **Enable root access from remote machines** checkbox if you would like to give remote machines root access to MySQL.
 - b. Clear the **Create An Anonymous Account** checkbox.
 - c. Select **Next** to continue.

14. The “Ready to execute...” window appears next. Select the **Execute** button to start the configuration.
15. Once the configuration is complete select the **Finish** button.

Additional MySQL tools can be found in the Optional MySQL GUI Tools section.

MassTransit

Installing MassTransit

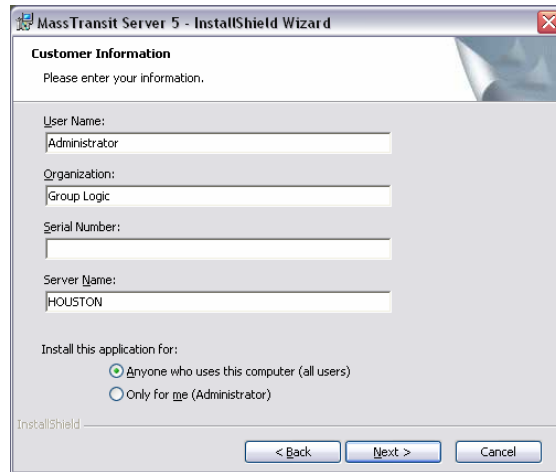
1. Verify MySQL 5.0.42 is running as a service. Go to the Services window to verify via Start -> Programs -> Administrative Tools -> Services.
2. Double click InstallMT5Server.exe on the CD or with your download package to launch the InstallShield Wizard. Note: you may quit the installation at any time; the **Cancel** button is enabled until the **Install** button is selected.
3. A “Preparing to Install...” window remains open until the installation preparation is complete.
4. When the installation preparation completes, the “Welcome to the InstallShield Wizard for MassTransit Server 5” window appears. Select the **Next** button to continue.
5. The “License Agreement” window appears next. The **Next** button is enabled after you select **I accept the terms in the license agreement**. Once you have read and agreed with the license agreement, select **Next** to continue or select **Cancel** to cancel the installation.
6. The “ReadMe Information” window appears next; read it and select **Next** to continue.
7. The “MassTransit Server 5 Features” window appears next. Select the features that you would like to install.



- a. All items are checked by default.
 - b. Checking the MassTransit Server Engine will install both the Engine and the MassTransit Administrator; this is necessary so you can configure the Engine.
 - c. Checking just the MassTransit Administrator will install just the Administrator. Starting in MassTransit 5.0, the file transfer engine runs as a service and can be accessed for viewing and administration by a separate application, the MassTransit Administrator. MassTransit Enterprise allows local and remote Administrators to connect. When remote administration is enabled, the MassTransit server can be administered from both Macintosh and Windows machines. MassTransit Professional only allows an Administrator to connect from the local computer. Additional details can be found below in the Configuring Remote Administration section.
 - d. Checking the MassTransit Manuals will install manuals and documentation.
 - e. Once you have made your selection, select **Next** to continue.
8. The “MySQL Settings” window appears next.



- a. In the MySQL MassTransit Account section, the following information is required:
 - i. Hostname: [default: localhost] Leave this setting configured as “localhost” so MassTransit can access the local database. *Do not use your local IP address.*
 - ii. Port: [default: 3306] Leave this setting configured to “3306” unless you have changed the TCP port used by the MySQL database server (this is rare).
 - iii. Username: [default: masstransit] This will be the name of the user account created in MySQL that MassTransit will use to access the database. You may change it to any username you wish.
 - iv. Password: This will be the password for the user account created in MySQL that MassTransit will use to access the database. You may change it to any password you wish.
 - v. Confirm Password: Please retype your password for verification.
 - vi. “Enable remote login for this account”: [default: not selected] If you wish to allow administration of the MassTransit server using the MassTransit Administrator from other machines, you will need to check this option. If it is not checked, your MassTransit server will not allow remote administration, although you will be able to administer the server locally. If you wish to allow remote administration, it is recommended that you enable it at this time; if you do not enable it now, you will later have to manually configure the proper permissions for both MassTransit and MySQL. Instructions on how to manually configure this can be found below in the Configuring Remote Administration section of this document. MassTransit Professional does not allow remote administration, so this box does not need to be checked.
 - b. Enter your “MySQL Root Password” if you set one when installing MySQL. If you did not, leave this field blank. The root password is required so that the MassTransit installer can create the new user account in MySQL.
 - c. Select **Next** to continue.
9. Once the installer validates the entered information, a dialog appears stating, “MySQL account configured successfully!” Select **OK** to continue.
 10. The “Destination Folder” window appears. The default installation location is C:\Program Files\Group Logic\MassTransit Server 5\.
 - a. Select the **Change** button to install to a different location.
 - b. Select **Next** to continue.
 11. The “Customer Information” window appears next; all fields are mandatory.



- a. Enter your **User Name**.
 - b. Enter the name of your **Organization**.
 - c. Enter the **Serial Number** provided to you by Group Logic.
 - d. Enter the **Server Name**; it auto-populates so verify that it is correct.
 - e. Select whom the application should be installed for: anyone using this computer or only you. The default is **Anyone who uses this computer (all users)**.
 - f. Select **Next** to continue.
12. The “Ready to Install the Program” window appears next. If you would like to make any changes to your installation, do so now. Once you have verified that all of the settings are accurate, select the **Install** button.
 13. A dialog appears stating that the dongle must be removed prior to the installation. If you have the dongle plugged in, remove it now. Once the dongle has been unplugged select **OK** to continue. You will later be prompted to plug the dongle back in.
 14. A dialog appears stating that the Sentinel Protection installer is being configured. This installs the drivers for the dongle.
 15. Once the Sentinel Protection Installer is complete, a dialog will prompt you to plug the dongle in. After the dongle is plugged in, select **OK** to continue.
 16. When the installation is complete, the “InstallShield Wizard Completed” window appears. Select **Finish**.

Troubleshooting

Problem: I did not get a dialog stating “MySQL account configured successfully!” while installing MassTransit.

Solution:

1. Is the MySQL service running? Go to the Services window to check via Start -> Programs -> Administrative Tools -> Services.
2. Did you enter the correct password?
3. Did you incorrectly leave the MySQL Root password field blank?

Launching the MassTransit Engine

1. The MassTransit Engine must be started via the Services window. To access the Services window, go to Start -> Programs -> Administrative Tools -> Services.
2. Once the Services window is open, highlight the service named “MassTransit” and select the **Start Service** button.
3. The default startup type for the MassTransit service is Automatic, thus anytime your machine reboots, the MassTransit service automatically starts. Note: MassTransit is dependent upon MySQL and will fail if MySQL is not started. Make sure MySQL is set to start automatically. If

you find that MassTransit is attempting to start before MySQL is ready, you can modify the options in the Recovery tab of the MassTransit service to have it retry.

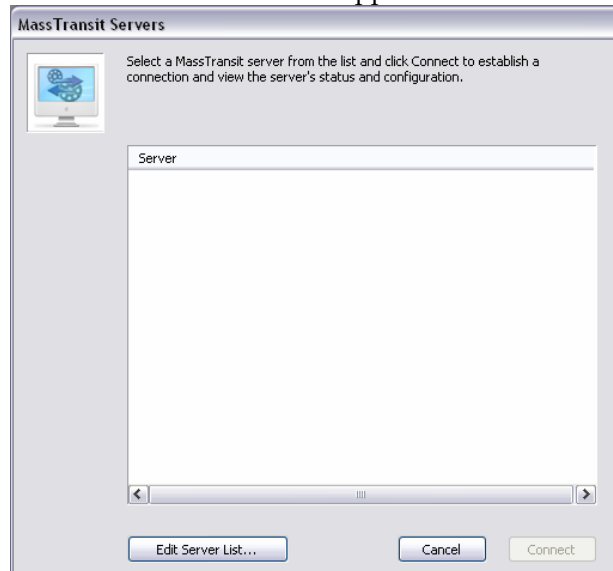
4. If you would like the MassTransit Engine service to access network volumes, do the following:
 - a. Go to the Services window via Start -> Programs -> Administrative Tools -> Services. Highlight the MassTransit service, right click, and select **Properties** to open the "Properties" window.
 - b. Go to the Log On tab and select the **This account:** option.
 - i. Select the **Browse** button to browse for your valid domain user that has access to the volumes needed.
 - ii. Enter and confirm your password.
 - iii. Select OK to finish and close the "Properties" window.

Shutting Down the MassTransit Engine

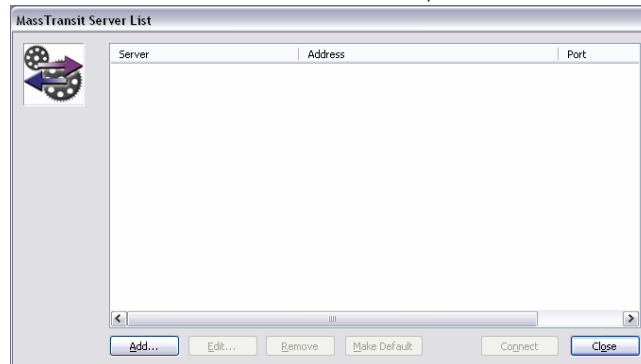
To shut down the MassTransit Engine, open the Services window, select the MassTransit service, and select the **Stop Service** button.

Launching the MassTransit Administrator

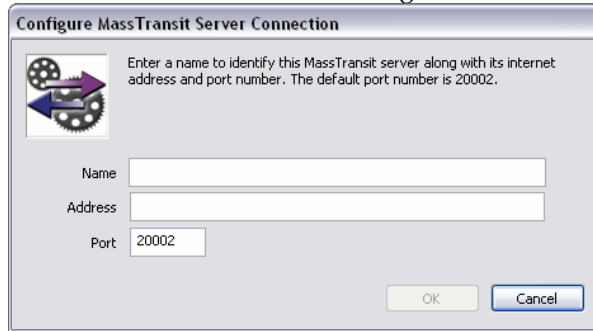
1. Double click the MassTransit Administrator.exe located in the root MassTransit folder to connect to your MassTransit server; the default location is C:\Program Files\Group Logic\MassTransit Server 5.
2. The "MassTransit Servers" window appears.



3. Add the server you wish to connect to:
 - a. Select the **Edit Server List...** button; the "MassTransit Server List" appears.



- b. Select the **Add** button; the “Configure MassTransit Server Connection” dialog appears.



- c. Add the name and address of the server you are connecting to; all fields are required. If Remote Administration is enabled and you are connecting to a remote server, enter that machine’s information; see the Remote Administration section of this document for additional information.
- i. Enter the server **Name** (or localhost if you are connecting locally); this is just a name to identify the server you’re connecting to.
 - ii. Enter the server IP **Address** (or localhost if you are connecting locally).
 - iii. Enter the **Port**. Use 20002 (the default) unless the MassTransit server has been configured to use a different port.
- d. Select **OK** to continue.
4. After selecting **OK** you return to the “MassTransit Server List” window and see the server you just created.
 5. To connect, highlight the server entry and select **Connect**. Note: You will be able to connect to the server only when the Engine is running, otherwise a dialog will appear stating that a connection cannot be made to the server.
 6. The “MassTransit” window appears with a toolbar of the following buttons: **Contacts**, **Status**, **Files**, **Log**, and **Setup**. Click any button to go to the corresponding window.

Shutting Down the MassTransit Administrator

To disconnect from the server only, go to the **File** menu and select **Disconnect From Server**. To exit the MassTransit Administrator, go the **File** menu and select **Exit**.

Troubleshooting

Problem: The MassTransit Engine shut down immediately upon launch.

Solution: Look for an error log entry on the Application page of the Event Viewer. To open the Event Viewer, go to Start -> Programs -> Administrative Tools -> Event Viewer. Look for an Error type and the source name should have “MassTransit” in it. Select the error and double click it. When the event opens, look at the description; the last few sentences of the description are frequently the most informative.

Problem: The MassTransit Administrator shut down immediately upon launch.

Solution:

1. Verify the Engine is running. When the Engine is not running a dialog appears stating, “An error occurred with MassTransit: Unable to connect to the MassTransit server.”
2. Look for an error log entry on the Application page of the Event Viewer. To open the Event Viewer, go to Start -> Programs -> Administrative Tools -> Event Viewer. Look for an Error type and the source name should have “MassTransit” in it. Select the error and double click it. When the event opens, look at the description; the last few sentences of the description are frequently the most informative.

Optional MySQL GUI Tools

Below are instructions for installing the MySQL GUI tools. Two of the most commonly used tools for administering and troubleshooting the MassTransit server are the MySQL Administrator and the MySQL Query Browser.

Installing the MySQL GUI Tools

1. Double-click mysql-gui-tools-com-5.0-r12-win32.msi on the CD or with your download package.
2. An introduction window appears. Select the **Next** button to proceed.
3. The “License Agreement” window appears. The **Next** button is enabled after you select **I accept the terms in the license agreement**. Read the license and select **Next** to continue or select **Cancel** to cancel the installation.
4. The “Destination Folder” window appears. Select the **Change** button to install to a different location; select **Next** to continue.
5. The “Setup Type” window appears. Select the **Complete** setup type and then select the **Next** button.
6. The “Ready to Install the Program” window appears next. Once you have verified that all of the settings are accurate, select the **Install** button.
7. Two “MySQL Enterprise Subscription” windows appear next. You may select **More** for more information or **Next** to continue on both windows.
8. The “Wizard Completed” window appears when the installation is complete. Select the **Finish** button to exit.

Launching the MySQL Administrator

1. Double click MySQLAdministrator.exe; the default installation is C:\Program Files\MySQL\MySQL Tools for 5.0.
2. A “Connect to MySQL Instance” dialog appears.
 - a. **Stored Connection** can be left blank; it will auto-populate on the next launch.
 - b. **Server Hostname:** [default: localhost] Leave this setting configured as “localhost” so MassTransit can access the local database. *Do not use your local IP address.*
 - c. **Port:** Leave this setting configured to “3306” unless you have changed the TCP port used by the MySQL database server (this is rare).
 - d. **Username:** This will be the name of the user account created in MySQL that MassTransit will use to access the database. You may change it to any username you wish.
 - e. Enter your **Password**.
 - f. Select **OK**.
3. The MySQL Administrator opens to the Server Information page and you can now administer MySQL as needed. For additional information, go to <http://www.MySQL.com/products/tools/administrator> .

Launching the MySQL Query Browser

1. Double click MySQLQueryBrowser.exe; the default installation is C:\Program Files\MySQL\MySQL Tools for 5.0.
2. A “Connect to MySQL Instance” dialog appears.
 - a. **Stored Connection** can be left blank; it will auto-populate on the next launch.
 - b. **Server Hostname:** [default: localhost] Leave this setting configured as “localhost” so MassTransit can access the local database. *Do not use your local IP address.*
 - c. **Port:** Leave this setting configured to “3306” unless you have changed the TCP port used by the MySQL database server (this is rare).
 - d. **Username:** This will be the name of the user account created in MySQL that MassTransit will use to access the database. You may change it to any username you wish.

- e. Enter your **Password**.
 - f. **Default Schema** can be left blank. MassTransit does generate a schema on launch called mtdatabase.
 - g. Select **OK**.
3. The MySQL Query Browser launches and you can now query your MySQL database as needed. For additional information, go to <http://www.MySQL.com/products/tools/query-browser> .

Configuring Remote Administration When MassTransit Is Already Installed

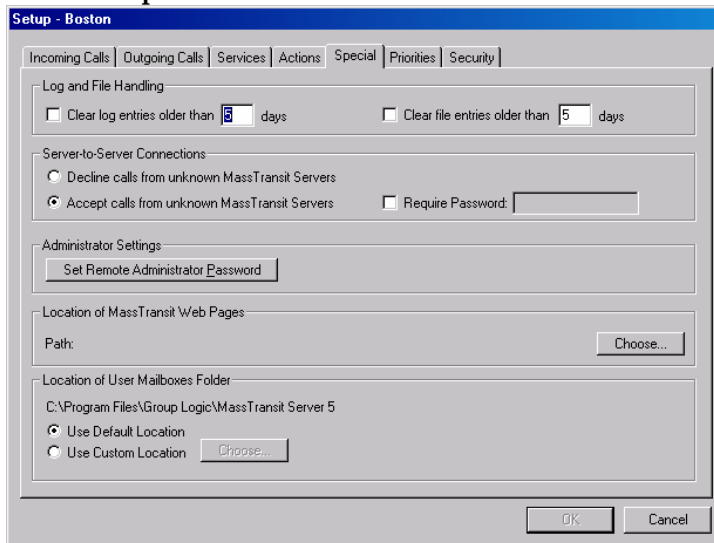
Starting in MassTransit 5.0, the file transfer engine runs as a service and can be accessed for viewing and administration by a separate application, the MassTransit Administrator. MassTransit Enterprise allows local and remote Administrators to connect. When remote administration is enabled, the MassTransit server can be administered from both Macintosh and Windows machines. MassTransit Professional only allows an Administrator to connect from the local computer, so this section is not relevant.

The easiest way to configure remote administration is to check the checkbox when you install MassTransit 5.1. If you already have MassTransit installed and want to enable Remote Administration, use the following instructions. Both MassTransit and MySQL will need to be configured before remote connections will be accepted.

Configuring Remote Administration in MassTransit

Note: This is unnecessary if you selected the **Enable Remote login for this account** checkbox during installation.

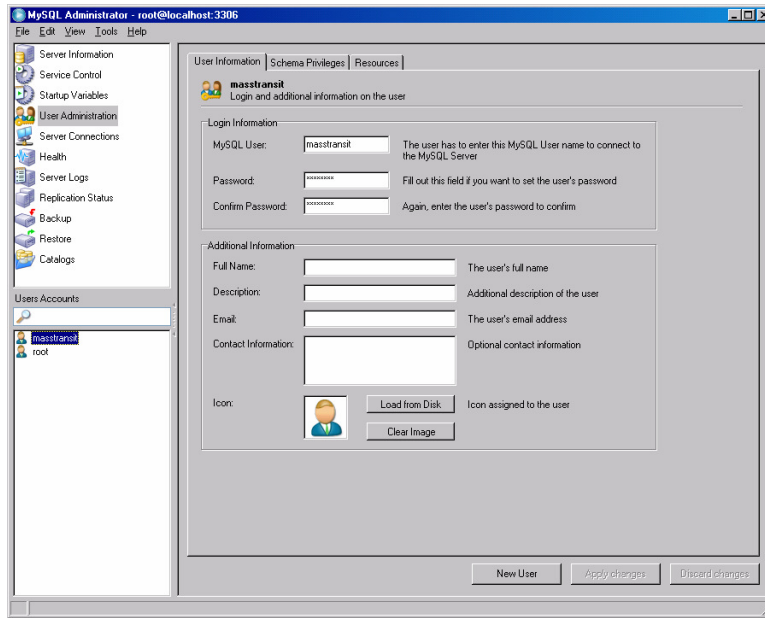
1. Via the MassTransit Administrator connect to the local server.
2. Select the **Setup** button on the toolbar.
3. Select the **Special** tab.



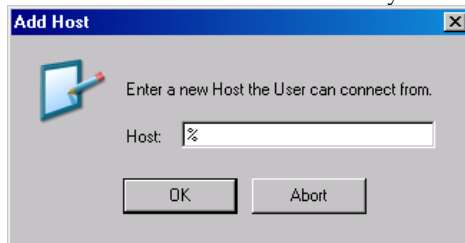
4. Click the **Set Remote Administrator Password...** button.
5. The Enter Password dialog appears; enter your password. This password will have to be entered by a Remote Administrator when it attempts to connect to your server.
6. Select the **OK** button and now any Remote Administrators with the password can connect to your server.

Configuring Remote Administration in MySQL

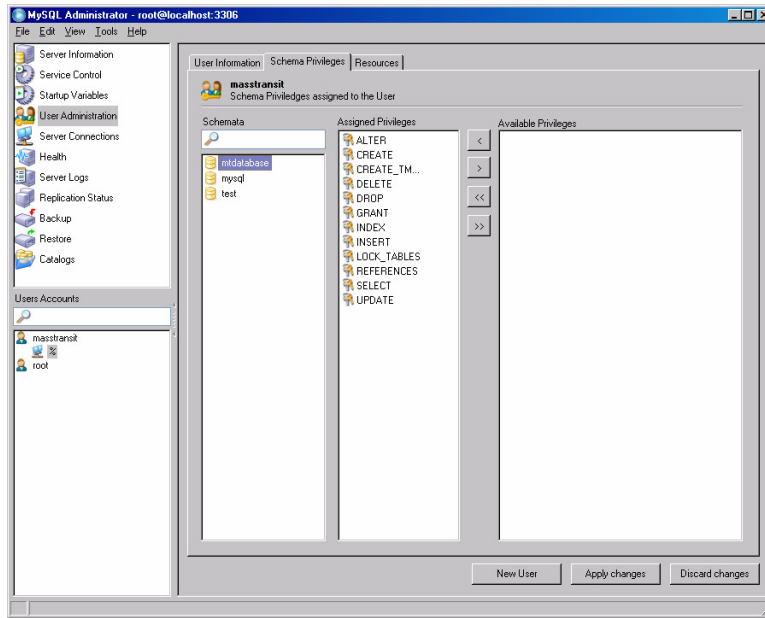
7. Launch the MySQL Administrator.
8. Select the User Administration page.
 - a. Select the "masstransit" account. This account may have a different name depending on the username you entered on the "MySQL Settings" dialog during the installation of MassTransit.



- b. While focus is on “masstransit” right click and select “Add Host From Which The User Can Connect”.
- c. The “Add Host” dialog appears; enter the name of the new host, “%”, and select **OK** to continue. This will allow any machine to connect to the database.



- d. The new host populates below the masstransit account.
 - e. The password on the General tab auto-populates the MySQL password used when you installed MassTransit. Remote administrators will not need to know this password to connect.
 - f. **NOTE:** Do NOT select the **Apply Changes** button until this host is completely configured.
9. Verify the host you just created in the Users Accounts section is highlighted and select the Schema Privileges Tab.
 - a. In the Schemas section, highlight mtdatabase.
 - b. Go to the Available Privileges Section and highlight all of the items listed.
 - c. Click the < button so all of the Available Privileges become Assigned Privileges.



- d. **NOTE:** Do NOT select the **Apply Changes** button until this host is completely configured.
10. Go to the Resources tab.
 - a. Configure the values in the Limiting user resources section. The default is "0"; "Unlimited" is the default when the MassTransit installer creates this account.
 - b. Select the **Apply Changes** button.
 - c. **NOTE:** When you select the **Apply Changes** button, it looks like the host you just created has disappeared. It has not disappeared; it is just no longer visible from the MySQL Administrator.

Now that you have configured both MySQL and MassTransit, Remote Administration is enabled.

Troubleshooting

Problem: A dialog appears stating, "An error occurred with MassTransit: Remote Administration is disabled because the required password has not been configured."

Solution: Remote Administration is not enabled in MassTransit; follow steps 1-6 to configure it.

Problem: A dialog appears stating, "An error occurred with MassTransit: Failed to connect to server due to problems initializing - most likely a database issue."

Solution: Remote Administration is not enabled in MySQL; follow steps 7-10 to configure it.

Web Configuration for Enterprise Servers Only

For information about configuring MassTransit for use with web servers, see the Web Configuration Instructions document located on the MassTransit Latest Releases web page in the MassTransit 5.1 Documentation section: <http://www.grouplogic.com/files/glidownload/mtreleases.cfm> .

Other MassTransit 5.1 Resources

Go to <http://www.grouplogic.com/files/mt/51/OtherMassTransit51Resources.html> for additional articles to help you set up, configure, and use MassTransit 5.1 and its new features. The [Group Logic Knowledge Base](#) contains many articles that provide detailed information on MassTransit 5.1 and its features and components. The HTML version of this file, "OtherMassTransit51Resources.html", is provided with your MassTransit 5.1 CD or with your download package.

© 1995-2008 Group Logic Incorporated. All Rights Reserved.