

# MassTransit Upgrade Guide

## MassTransit 6.0 for Mac OS X

**GroupLogic**

March 11, 2009

Group Logic, Inc.  
1100 North Glebe Road, Suite 800  
Arlington, VA 22201  
Phone: 703-528-1555 Fax: 703-528-3296  
E-mail: [info@grouplogic.com](mailto:info@grouplogic.com)  
Internet: <http://www.grouplogic.com>

## Contents

<b>Contents</b>	<b>2</b>
<b>Using This Document</b>	<b>3</b>
BEFORE YOU BEGIN.....	3
MASSTRANSIT VERSIONS PRIOR TO 5.0.....	3
UPGRADING PROCESS.....	3
<b>Step 1: Application and Database Backups</b>	<b>4</b>
MASSTRANSIT APPLICATION BACKUP .....	4
MYSQL DATABASE BACKUP.....	4
<b>Step 2: Upgrading from MySQL 4 to MySQL 5</b>	<b>5</b>
WHAT YOU WILL NEED... ..	5
MYSQL DATABASE BACKUP .....	5
INSTALL MYSQL 5.0 .....	5
INSTALLING MYSQL GUI TOOLS .....	6
MIGRATE DATA TO 5.0.....	6
SECURITY CONFIGURATIONS FOR MYSQL.....	7
MASSTRANSIT RUNNING ON A REMOTE SERVER.....	8
MYSQL UPGRADE COMPLETE.....	8
<b>Step 3: Mac OS X Upgrade to MassTransit 6</b>	<b>9</b>
MASSTRANSIT UPGRADE 5.X TO 6.0 .....	9
ENTERPRISE AND PROFESSIONAL SERVERS.....	9
SATELLITE SERVERS .....	10
APPLICATION CLIENTS .....	11
<b>Step 4: Migrating Configurations</b>	<b>12</b>
COPYING USER MAILBOXES .....	12
MAINTAINING VERIFIED CERTIFICATES.....	12
PRESERVING MASSTRANSIT.CFG SETTINGS AND MASSTRANSITENGINE.CFG SETTINGS ....	12
MAINTAINING MT IP ADDRESSES.TXT .....	13
PRESERVING ADMINISTRATOR CONNECTION CONFIGURATION .....	13
CONSIDER UPDATING ALIASES AND SHORTCUTS.....	13
WEB CONFIGURATION FOR ENTERPRISE SERVERS ONLY .....	13
AUTO-STARTING MASSTRANSIT.....	13
<b>Step 5: Verifying the Upgrade</b>	<b>14</b>
LAUNCHING THE MASSTRANSIT ENGINE .....	14
LAUNCHING THE MASSTRANSIT ADMINISTRATOR .....	14
SHUTTING DOWN THE MASSTRANSIT ADMINISTRATOR.....	14
SHUTTING DOWN THE MASSTRANSIT ENGINE.....	14
VERIFYING CONNECTIVITY.....	15
VERIFYING THE WEB CONFIGURATION FOR ENTERPRISE SERVERS ONLY .....	15
<b>Configuring Remote Administration When MassTransit Is Already Installed</b>	<b>16</b>
CONFIGURING REMOTE ADMINISTRATION IN MASSTRANSIT .....	16
CONFIGURING REMOTE ADMINISTRATION IN MYSQL.....	17
TROUBLESHOOTING.....	18
<b>Other MassTransit 6.0 Resources</b>	<b>19</b>
GROUP LOGIC MASSTRANSIT TECHNICAL SUPPORT .....	19

## Using This Document

### Before You Begin

This document details how to upgrade an existing MassTransit 5 installation to MassTransit 6.0 for Mac OS X. Please follow the steps carefully to ensure that all of your settings are maintained with the new installation.

Before starting the upgrade process, please verify that you have the following:

- Version number of MassTransit you are currently running. Must be MassTransit 5.x.
- Version number of MySQL you are currently running. Must be MySQL 5.
  - To verify the Distrib version number, open the terminal and enter:  
`/usr/local/mysql/bin/mysql -V`
- MassTransit CD for the latest release, or installers downloaded electronically (see <http://www.grouplogic.com/files/gli/download/mtreleases.cfm> ).

MassTransit Enterprise and Professional users will also need:

- MassTransit serial number for version 6. To locate your current version 6 serial number, launch the MassTransit Administrator, go to the **File** menu, and select **Server Information**. Your serial number is the last item listed in the **Licensed To:** section. Users upgrading from MassTransit 5 must obtain a version 6 serial number from Group Logic; see contact information below.
- MassTransit hardware key also known as a “dongle”.

Please contact Group Logic Technical Support if you need to obtain any of the items above. Email [support@grouplogic.com](mailto:support@grouplogic.com) or call 703-527-7979.

You should be logged in as a user with administrative privileges (but not root) to install MySQL and MassTransit 6.0.

### MassTransit Versions Prior to 5.0

If your current installation of MassTransit is less than version 5, you will need to upgrade to MassTransit 5 prior to upgrading to MassTransit 6. To download MassTransit 5, go to the MassTransit 5 Releases section located at: <http://www.grouplogic.com/files/gli/download/mtreleases.cfm>. This Web site also includes upgrading instructions in the MassTransit 5 Documentation section. Once you have successfully upgraded to MassTransit 5, you can then upgrade to 6.0 by following the instructions below.

### Upgrading Process

This document includes details on how to upgrade to MySQL 5 and MassTransit 6.0. You should not launch MassTransit until you have completed all of the processes outlined in this document.

The upgrading process is a series of major steps:

1. Backing up your existing installation of MassTransit.
2. Backing up your MassTransit databases from MySQL.
3. Upgrading to MySQL 5 if necessary. MySQL 5 is required for MassTransit 6.
4. Upgrading from MassTransit 5 to MassTransit 6.
5. Migrating custom configurations to the new MassTransit installation.
6. Verifying the success of the new installation.

It is highly recommended that you back up your original MassTransit application folder and databases so that if you encounter problems, you can still run from the backup until support can resolve the issue.

## Step 1: Application and Database Backups

Before upgrading your existing MassTransit installation to a new version it is highly recommended that you make a backup. If you do not back up your MassTransit 5 installation, including the database backup, you will not be able to revert back to MassTransit version 5.

You will need to select a backup location for MassTransit, e.g. a different folder on the same volume, a network volume, a CD, etc. It is highly recommended that you make backups immediately before you upgrade and do not run the older version of MassTransit again to ensure that the transition between the two servers is seamless. If you encounter a problem running with the new version of MassTransit, you can revert to this saved application folder until the issue can be resolved.

### MassTransit Application Backup

Perform the following steps to make a backup copy of the MassTransit application folder:

1. If MassTransit is currently running complete all file transfers and quit the application.
2. Locate the folder that contains the old MassTransit application.
3. Copy the entire MassTransit application folder to your backup location.

### MySQL Database Backup

Perform the following steps to make a backup copy of the MassTransit database.

1. Login into your Mac OS X system with a user account that has administrator privileges.
2. Shut down the MassTransit Engine if it is running.
3. Open *Terminal* from the *Utilities* folder inside *Applications* on the Mac OS X system running MySQL.
4. Make a copy of the MySQL *data* folder in the */usr/local/mysql* folder by entering the following commands:

```
mkdir ~/mysqlbackup
sudo cp -R /usr/local/mysql/data ~/mysqlbackup
```

- NOTE:** This step is imperative. The *mysqlbackup* folder is used in a later section to restore your database information and fix the GRANTS table if problems occur during the updating process. The backup folder can be found inside the home directory of the logged in user.
5. Make backups of the MTDATABASE and MYSQL schemas with the *MySQL Administrator* application. When backing up, ensure that *Lock All Tables* under the *Advanced Options* tab in the *Backup* dialog is selected.
  6. Stop the MySQL Server using the *Stop Server* button on the *Services* tab of the MySQL Administrator.

## Step 2: Upgrading from MySQL 4 to MySQL 5

MassTransit 6.0 requires the use of MySQL version 5.0, which allows for faster performance, better management, enhanced data integrity, improved security and additional replication services. If your current installation of MySQL is version 4, you must upgrade to MySQL 5 prior to installing MassTransit 6. The MassTransit 6 engine will not run with MySQL 4. If MySQL 5 is already installed you may want to upgrade to MySQL 5.0.78, otherwise please skip to the [Mac OS X Upgrade to MassTransit 6](#) section of this document.

### What you will need...

To complete the MySQL 5 upgrade, you will need:

1. A MySQL 5.0.78 installation disk image. This disk image is available on the MassTransit 6.0 CD and on the MassTransit releases web page:  
<http://www.grouplogic.com/files/gldownload/mtreleases.cfm>
2. Administrative login permissions for the machine you want to upgrade.

This upgrade procedure assumes that you do not have any other versions of MySQL 5 installed and that MassTransit is installed.

### MySQL Database Backup

First you must back up existing MySQL version 4 or 5 data. You should have already done in this in the previous section: [MySQL Database Backup](#).

### Install MySQL 5.0

**NOTE:** The disk images are located on the Group Logic MassTransit 6.0 CD in the *MySQL* folder.

Follow the below instructions to install and launch MySQL.

1. Unzip the MySQL installation files by double-clicking the appropriate mysql .dmg file located on your CD or with your download package. A directory opens containing the required installers.  
To install on an Intel Mac OS 10.4, use the mysql-classic-5.0.78-osx10.4-i686.dmg.  
To install on a PPC Mac OS 10.4, use the mysql-classic-5.0.78-osx10.4-powerpc.dmg.  
To install on an Intel Mac OS 10.5, use the mysql-classic-5.0.78-osx10.5-x86.dmg.  
To install on a PPC Mac OS 10.5, use the mysql-classic-5.0.78-osx10.5-powerpc.dmg.
2. To install the MySQL engine, double click the mysql-classic-5.0.78 .pkg file.
3. An "Introduction" window appears. Select the **Continue** button to proceed.
4. The "ReadMe" window appears. After reading, select **Continue** to proceed.
5. The "License" window appears. Read the License and select **Continue** to proceed.
6. A dialog then appears asking you to accept the terms of the agreement. Select the **Agree** button to continue or select the **Disagree** button to cancel the installation.
7. The "Select Destination" window appears next and the default destination is highlighted; you may select a different destination. Once you make your selection select **Continue**.
8. The "Installation Type" window appears; select **Install** for the basic installation. You will need to authenticate using your Mac administrative password to allow the installation to proceed.
9. Once the installation is complete a window appears stating the software was successfully installed. Select the **Close** button.

MySQL has now been successfully installed; if you installed to the default location, it is located in the /usr/local/ folder.

Configure MySQL to launch when your machine starts up, using the following steps.

10. Double click MySQLStartupItem.pkg.
11. An “Introduction” window appears. Select the **Continue** button to proceed.
12. The “Select Destination” window appears next and the default destination is highlighted. Make your selection and select the **Continue** button.
13. The “Installation Type” window appears; select **Install** or **Upgrade** for the basic installation.
14. Once the installation is complete a window appears stating the software was successfully installed. Select **Close**.

Make the necessary customizations to the MySQL installation using the following steps.

15. Open the Terminal application in the Applications/Utilities folder.
16. Enter the following command:  

```
sudo pico /etc/my.cnf
```
17. Type your administrative password for the machine at the password prompt.
18. If the following is not the first line of the file, add it to the top of the file.  

```
[mysqld]
```
19. Add the following line of text on the second line of the file (right after the [mysqld]):  

```
temp-pool=0
```
20. Type Control-X to exit. Type Y at the prompt to save your changes. Type Enter at the prompt to use the default file name.
21. At the terminal prompt, enter the following commands to restart the MySQL server with the new settings.  

```
sudo /Library/StartupItems/MySQLCOM/MySQLCOM stop  
sudo /Library/StartupItems/MySQLCOM/MySQLCOM start
```

MySQL is now correctly configured.

## Installing MySQL GUI Tools

Below are instructions for installing the MySQL GUI tools. Two of the most commonly used tools for administering and troubleshooting the MassTransit server are the MySQL Administrator and the MySQL Query Browser.

To upgrade from MySQL 4 to MySQL 5, you will need to install the updated versions of the MySQL Administrator and MySQL Query Browser. The tools are available in the mysql-gui-tools-5.0-r12-osx10.4-universal.dmg disk image in the MySQL folder of your MassTransit 6.0 CD or with your download package.

To install the MySQL GUI Tools

1. Double-click “mysql-gui-tools-5.0-r12-osx10.4-universal.dmg”. A directory opens containing the MySQL Tools icon.
2. Install the tools by dragging the MySQL Tools icon to your Applications folder.

## Migrate Data to 5.0

MySQL 5.0 has now been installed. Prior to continuing, your existing MassTransit data must be restored. To restore the old 4.1 or 5 data, complete the following steps:

1. Open *Terminal* from the *Utilities* folder inside *Applications* on your Mac OS X system.
2. Stop MySQL 5 if it is running by entering the following command:

```
sudo /Library/StartupItems/MySQLCOM/MySQLCOM stop
```

3. Overwrite the data folder in the `/usr/local/mysql/` folder with the `mysql4` backup folder you created in the [MySQL Database Backup](#) part of the upgrade process and fix the ownership of the folder by entering the following commands:

```
sudo cp -R ~/mysqlbackup/data /usr/local/mysql/
sudo chown -Rv mysql:mysql /usr/local/mysql/data/
```

4. Start the MySQL Service by entering the following command:

```
sudo /Library/StartupItems/MySQLCOM/MySQLCOM start
```

**NOTE:** This step requires that you installed the startup item as specified in Step 10 of the Install MySQL 5.0 section.

5. Now it is necessary to make your database compatible with MySQL 5.0 by entering the following command (all on one line). Replace “ROOTPASSWORD” with the root password for the previous MySQL server (which is now the root password on your MySQL 5.0.78 server).

```
sudo /usr/local/mysql/bin/mysqlcheck --check-upgrade
--all-databases --auto-repair --user=root --password=ROOTPASSWORD
```

**NOTE:** You may see a few warnings about table repairs that are required. These should be handled automatically by the above command, but you can re-run the command to confirm that the repairs occurred successfully.

6. Then run the following command to repair the privileges.

```
sudo /usr/local/mysql/bin/mysql_fix_privilege_tables
```

## Security Configurations for MySQL

It is critical that the directory where the MySQL database files are stored (/usr/local/mysql/data by default) and the Mac temp directory (/tmp or /var/tmp) be excluded from virus scan and server backups. Both virus scan tools and backup tools can lock key files in these folders and interrupt operation of the MySQL server, and by extension, MassTransit.

To backup the MySQL databases, it is recommended that you use the MySQL or other standard tools to automatically save the backup files to a directory or volume that can then be processed by your backup or archiving solution.

By default, MySQL uses TCP/IP port 3306 to accept client communications. It is recommended to restrict traffic on this port by setting appropriate firewall rules. Normally, the only remote computers that should be allowed to access MySQL on the MassTransit server are those running the MassTransit Administrator (or those running the MassTransit Engine or MTWeb in the rare configurations where MySQL is not running on the same server as MassTransit).

You should use a strong root password on your MySQL installation. To change the root password, use the following steps. Note that your current root password after importing the old MySQL data will be the same as the old MySQL root password. You should use a strong root password of 8 or more characters with a variety of letters, numbers, and symbols. Follow these steps to change your password.

1. Open the Terminal application in the Applications/Utilities folder.
2. Enter the following command, where PASSWORD is your current root password:  
/usr/local/mysql/bin/mysql -uroot -pPASSWORD
3. Enter the following at the MySQL prompt:  
UPDATE mysql.user SET Password=PASSWORD('MyNewPass') WHERE User='root';  
FLUSH PRIVILEGES;  
Quit;

Enter your desired root password in place of MyNewPass in the first command.  
Your MySQL root password has now been changed. You may close the Terminal.

## MassTransit Running on a Remote Server

If MassTransit is running on a remote server, separate from where MySQL is installed you will need to execute the following command on the MySQL command prompt before installing MassTransit:

```
GRANT ALL PRIVILEGES ON *.* TO 'root'@'<REMOTE IP ADDRESS>' identified by  
'<PASSWORD>' WITH GRANT OPTION
```

In the above statement, replace <REMOTE IP ADDRESS> with the MassTransit Server IP Address and replace '<PASSWORD>' with the root password for the MySQL server.

## MySQL Upgrade Complete

Your server is now running against MySQL 5.0.78. You can now upgrade to MassTransit 6.

If you allow remote administration of MassTransit and do not click the checkbox for Remote Administration as part of the MassTransit 6 installation (Step 13), then you will need to follow the instruction on how to configure remote administration for [MassTransit and MySQL](#).

## Step 3: Mac OS X Upgrade to MassTransit 6

### MassTransit Upgrade 5.x to 6.0

To install MassTransit 6.0 on Mac OS X 10.4 client or later, or Mac OS X 10.4 Server or later, you will need to have a USB dongle and a version 6 serial number. Please contact Group Logic Technical Support if you need to obtain these. Email [support@grouplogic.com](mailto:support@grouplogic.com) or call 703-527-7979. MassTransit 6.0 installs to a different installation folder. You should not install to the same directory as your previous MassTransit 5 installation.

### Enterprise and Professional Servers

Install MassTransit 6.0 Server; using the directions below. For a more specific installation instructions and troubleshooting information, see the Installation Guide for Macintosh included on the CD for assistance.

1. Log into Mac OS X as the user you will be running MassTransit under.
2. Be sure that you have sent all queued files.
3. If MassTransit is currently running, quit the application.
4. Back up your MassTransit application folder; see the “[Application and Database Backups](#)” section.
5. Verify MySQL 5 is installed and running; see the “[Upgrading from MySQL 4 to MySQL 5](#)” section.
6. Double click **Install MassTransit Server 6** located on your CD or with your download package to launch the Installer Vise X Wizard.
7. The “ReadMe” window appears first. Read it and select the **Continue** button to proceed.
8. The “License Agreement” window appears next. Once you have read and agreed with the license agreement, select **Continue** to proceed.
9. A dialog then appears asking you to accept the terms of the agreement; select **Agree** to continue or **Disagree** to cancel the installation.
10. The “Select Destination” window appears next. The default is the Applications folder; you may select a different destination. Once you make your selection select the **Continue** button.
11. The “Installation Type” window appears next. You have two choices available via the spin box: Easy Install or Custom Install.
  - a. Easy Install – Installs the MassTransit Engine, Administrator, and Documentation.
  - b. Custom Install – Allows you to manually select the features you want.

Once you have made your selection, select **Install** to continue.
12. While installing, the “Registration Preferences” dialog appears. All fields are mandatory.
  - a. Enter your **Server Name**; this is the name of the computer where you are installing MassTransit.
  - b. Enter the name of your **Organization**.
  - c. Enter the **Serial Number** provided to you by Group Logic.
  - d. Select **OK** to continue.
13. The “MySQL Settings” dialog appears next.
  - a. In the MySQL MassTransit Account section, the following information is required:
    - i. Hostname: [default: localhost] Leave this setting configured as “localhost” so MassTransit can access the local database. *Do not use your local IP address.* If MassTransit is on a remote server, enter the IP address of the machine where MySQL is installed.
    - ii. Port: [default: 3306] Leave this setting configured to “3306” unless you have changed the TCP port used by the MySQL database server (this is rare).
    - iii. Username: [default: masstransit] This will be the name of the user account created in MySQL that MassTransit will use to access the database. In order to

- ensure that all your remote access permissions from MassTransit 5 are maintained, it is highly recommended to use the same username used by MassTransit 5. You can find this username in the MassTransitEngine.cfg file in your MassTransit 5 backup folder under DATABASE\_USER. *Do not use root.*
- iv. Password: This will be the password for the user account created in MySQL that MassTransit will use to access the database. It is highly recommended to use the same password used by MassTransit 5.
  - v. “Enable remote login for this account”: [default: not selected] If you wish to allow administration of the MassTransit server using the MassTransit Administrator from other machines, you will need to check this option. If it is not checked, your MassTransit server will not allow remote administration, although you will be able to administer the server locally. **If you wish to allow remote administration, it is recommended that you enable it at this time**; if you do not enable it here, you will later have to manually configure the proper permissions for both [MassTransit and MySQL](#).
- b. Enter your MySQL root password. The root password is required so that the MassTransit installer can create the new user account in MySQL.
  - c. Select **OK** to continue.
14. Once the installer validates the entered information, a dialog appears stating, “MySQL account configured successfully!” Select **OK** to continue.
15. Three additional dialogs will appear while MassTransit is being installed:
- a. The first will ask, “Do you want to automatically optimize your network settings for broadband?” Select **Yes** to optimize the TCP/IP stack for MassTransit protocol connections; or select **No** to continue.
  - b. The second dialog asks, “The installer can back up your MTWeb folder before replacing it. Clicking OK creates a backup of the folder with a .bak extension. Clicking Cancel replaces your current MTWeb folder without making a backup.” Click **OK**. This dialog only appears if you are reinstalling MassTransit 6.
  - c. The third will ask, “MassTransit stores files received from and files being sent to other contacts in the User Mailboxes folder. Do you wish to share this folder with File Sharing?” Sharing your User Mailboxes folder will allow users to connect from other machines and access files in the standard User Mailboxes for MassTransit. If you do not share this folder now and later you want to allow remote access to this folder, you will need to manually share the folder after MassTransit is installed. Select **Yes** or **No** to continue.
16. The “Finish Up” window appears when the installation is complete. There are two options:
- a. Select **Quit** to exit the installer.
  - b. Select **Continue** and the “Installation Type” window will reappear; allowing you to install additional MassTransit features.

**The MassTransit upgrade is not yet complete.** Do not launch MassTransit until you have completed all of the steps in the upgrading instructions in the [“Migrating Configurations”](#) section.

## Satellite Servers

1. Log into Mac OS X as the user you will be running MassTransit under.
2. Be sure that you have sent all queued files.
3. If MassTransit is currently running, quit the application.
4. Back up your MassTransit application folder; see the [“Application and Database Backups”](#) section.
5. Run the Install MassTransit 6 Satellite installer included on the MassTransit 6 CD. Choose all default settings to install.  
**NOTE:** You must use an administrative account when installing MassTransit.
6. Copy your MTClient.CFG file from your previous MassTransit 5 Satellite folder and place it in your MassTransit 6 Satellite folder.

7. Copy the data folder from the Databases folder in the MassTransit 5 Satellite installation folder to the Databases folder in the MassTransit 6 Satellite installation folder.

**The MassTransit upgrade is not yet complete.** Do not launch MassTransit until you have completed all of the steps in the upgrading instructions in the [“Migrating Configurations”](#) section.

## Application Clients

1. Log into Mac OS X as the user you will be running MassTransit under.
2. Be sure that you have sent all queued files.
3. If MassTransit is currently running, quit the application.
4. Back up your MassTransit application folder; see the [“Application and Database Backups”](#) section.
5. Run the Install MassTransit 6 Client installer included on the MassTransit 6 CD. Choose all default settings to install.  
**NOTE:** You must use an administrative account when installing the MassTransit Client.
6. Copy your MTClient.CFG file from your previous MassTransit 5 Client folder and place it in your MassTransit 6 Client folder.
7. Copy the data folder from the Databases folder in the MassTransit 5 Client installation folder to the Databases folder in the MassTransit 6 Client installation folder.

**The MassTransit upgrade is not yet complete.** Do not launch MassTransit until you have completed all of the steps in the upgrading instructions in the [“Migrating Configurations”](#) section.

## Step 4: Migrating Configurations

The following sections detail how to ensure that all configurations are properly migrated from your old MassTransit installation to the new one. If you installed MassTransit to the default location, the new installation folder will be: [/Applications/MassTransit Server 6 Folder](#).

### Copying User Mailboxes

Copy your User Mailboxes folder from the backup of your old MassTransit Folder to the new MassTransit 6 Folder. If you choose not to do this, MassTransit will create a new User Mailboxes folder when it starts up.

If you are running on Mac OS X and share the user mailboxes, copy the contents of the old “User Mailboxes” folder from your previous installation to the “User Mailboxes” folder in the new MassTransit folder.

In order to make mailboxes for new contacts available to all users, configure the “Set User Mailbox Permissions” script, available on the Group Logic website:  
<http://www.grouplogic.com/products/masstransit/scripts/>

### Maintaining Verified Certificates

If you are using a verified certificate [e.g. one purchased from VeriSign], you may need to ensure that the certificate and private key files are configured properly for the new version of MassTransit.

If the certificate and/or private key files were *not* located within the previous MassTransit installation folder then no action is needed as MassTransit will continue to find the files in their present location if you are installing on the same server.

If the certificate and/or private key files were located in the “Security” folder of the previous MassTransit installation they will need to be moved to the “Security” folder of the new MassTransit installation. In addition, restart MassTransit, go to **Setup->Security** and update the preferences to access the files at their new location. If you are using verified SSL certificates, the mtcert.pem (located in the Security folder) and mtkey.pem (located in the Security\private folder) files must be manually moved from the backed up Security folder into the MassTransit 6 Security folder. **Do not** simply copy the old Security folder to the new MassTransit 6 installation as other files in the folder have been updated for version 6.

If you are not installing MassTransit 6.0 on the same server, then you will need to copy the certificate and/or private key files to the new server and update the preferences in MassTransit on the **Setup->Security** tab to access the files at the new location.

### Preserving MassTransit.cfg Settings and MassTransitEngine.cfg Settings

#### For Enterprise and Professional Servers only

If you were using the [MassTransit.cfg](#) and [MassTransitEngine.cfg](#) files to specify settings for the previous MassTransit installation, you will need to make equivalent changes in the updated versions of the [MassTransit.cfg](#) and [MassTransitEngine.cfg](#) files.

**DO NOT** simply drop the old [MassTransit.cfg](#) and [MassTransitEngine.cfg](#) files in the new MassTransit directory. Some changes may have been made to the settings in these files and using the newest version ensures proper operation.

1. Open the new [MassTransitEngine.cfg](#) file in the root MassTransit folder in a text editor.

2. Open the [MassTransitEngine.cfg](#) file that you backed up from your old installation in a text editor. You may want to rename this file `oldMassTransitEngine.cfg` to avoid confusion over which is the new file.
3. For each enabled setting in your old [MassTransitEngine.cfg](#) file, uncomment the same setting and set the value appropriately in the new [MassTransitEngine.cfg](#) file. Settings with a '%' preceding them are not enabled. *Do not change the settings for DATABASE\_HOST, DATABASE\_NAME, DATABASE\_USER, or DATABASE\_PASSWORD.*
4. Save the new [MassTransitEngine.cfg](#) file.
5. Copy the new version of the [MassTransit.cfg](#) file from the "Extras" folder of the new MassTransit 6 installation to the main MassTransit folder.
6. Open the new [MassTransit.cfg](#) file in a text editor.
7. Open the [MassTransit.cfg](#) file that you backed up from your old installation in a text editor. You may want to rename this file `oldMassTransit.cfg` to avoid confusion over which is the new file.
8. For each enabled setting in your old [MassTransit.cfg](#) file, uncomment the same setting and set the value appropriately in the new [MassTransit.cfg](#) file. Settings with a '%' preceding them are not enabled.
9. Save the new [MassTransit.cfg](#) file.

### Maintaining MT IP Addresses.txt

If you were using [MT IP Addresses.txt](#) on your previous MassTransit installation, copy the [MT IP Addresses.txt](#) file that you backed up into the new MassTransit folder. No changes to the actual file are required. If in use, the [MT IP Addresses.txt](#) file is found in the root MassTransit folder.

### Preserving Administrator Connection Configuration

In order to preserve the list of servers the MassTransit Administrator can connect to, copy all files in the ServerPreferences folder in the backed up MassTransit installation to the ServerPreferences folder in the new MassTransit installation.

### Consider Updating Aliases and Shortcuts

If you have an alias or shortcut that you used to launch the previous version of MassTransit, you may want to update it to point to the new version. This is especially important if you have one as a startup item, to ensure that the old version of MassTransit is not launched automatically.

### Web Configuration for Enterprise Servers Only

MassTransit 6.0 will require updates to the Web Configuration. For information about configuring MassTransit for use with web servers, see the Web Configuration Instructions document located on the MassTransit Latest Releases web page in the MassTransit 6.0 Documentation section:  
<http://www.grouplogic.com/files/glidownload/mtreleases.cfm>.

### Auto-starting MassTransit

For information about configuring MassTransit to launch automatically when your machine starts up, see the following Knowledge Base article located at:  
[http://www.grouplogic.com/knowledge/index.cfm/fuseaction/view\\_Bug/docID/223](http://www.grouplogic.com/knowledge/index.cfm/fuseaction/view_Bug/docID/223).

## Step 5: Verifying the Upgrade

Once you have completed all the upgrade steps, you can launch MassTransit.

### Launching the MassTransit Engine

Double click the MassTransit Engine application located in the root MassTransit folder; the default location is `/Applications/MassTransit Server 6 Folder/`. The MassTransit Engine icon appears on the dock and remains there while running. You may want to make an alias of this program on the desktop or dock.

### Launching the MassTransit Administrator

1. Double click the MassTransit Administrator application located in the root MassTransit folder; the default location is `/Applications/MassTransit Server 6 Folder/`. The splash screen appears for a moment and then the MassTransit Administrator icon appears on the dock and remains there while running.
2. To connect to your MassTransit server, go to the **File** Menu and select **Connect to Server**; the “MassTransit Servers” window appears.
3. If you did not preserve your server preferences, add the server you wish to connect to:
  - a. Select the **Edit Server List...** button; the “MassTransit Server List” appears.
  - b. Select the **Add** button; the “Configure MassTransit Server Connection” dialog appears.
  - c. Add the name and address of the server you are connecting to; all fields are required. If Remote Administration is enabled and you are connecting to a remote server, enter that machine’s information.
    - i. Enter the server **Name** (or localhost if you are connecting locally); this is just a name to identify the server you’re connecting to.
    - ii. Enter the server IP **Address** or DNS name (or localhost if you are connecting locally).
    - iii. Enter the **Port**. Use 20002 (the default) unless the MassTransit server has been configured to use a different port.
  - d. Select **OK** to continue.
  - e. After selecting **OK** you return to the “MassTransit Server List” window and see the server you just created.
4. To connect, highlight the server entry and select **Connect**. Note: You will be able to connect to the server only when the Engine is running, otherwise a dialog will appear stating that a connection cannot be made to the server.
5. On connection, the “MassTransit” toolbar appears with the following buttons: **Contacts**, **Status**, **Files**, **Log**, and **Setup**. Click any button to go to the corresponding window.

### Shutting Down the MassTransit Administrator

To disconnect from the server only, go to the **File** menu and select **Disconnect From Server**. This will not shut down the Administrator. To exit the MassTransit Administrator go the **MassTransit Administrator** menu and select **Quit MassTransit Administrator**. If you are currently connected to a server, you will be disconnected before the Administrator quits.

### Shutting Down the MassTransit Engine

To shut down the MassTransit Engine, select the MassTransit Engine from the dock, go the **MassTransit Engine** menu and select **Quit MassTransit Engine**.

## Verifying Connectivity

To ensure that MassTransit can properly connect following the upgrade, attempt outgoing calls to server entries and verify that you can receive incoming calls.

On Macintosh, if you are running MassTransit as a non-root user and want to listen below port 1024, you will need to do some additional configuration. Please consult the following knowledge base articles for instructions:

For Mac OS 10.4: <http://www.grouplogic.com/knowledge/index.cfm/fuseaction/view/docID/172>

For Mac OS 10.5: <http://www.grouplogic.com/knowledge/index.cfm/fuseaction/view/docID/343>

## Verifying the Web Configuration for Enterprise Servers only

To ensure that your web configuration is functional, verify that you can login to the MassTransit Web site, upload and download files. It is advisable to do this from both inside and outside the firewall (if relevant) and with all user platforms (Macintosh and Windows), as there are slight differences in configuration that need verification.

## Configuring Remote Administration When MassTransit Is Already Installed

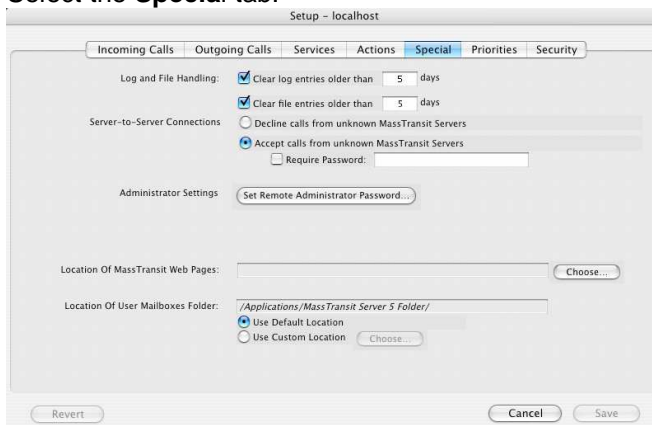
In MassTransit the file transfer engine runs as a service and can be accessed for viewing and administration by a separate application, the MassTransit Administrator. MassTransit Enterprise and Professional allow local and remote Administrators to connect. When remote administration is enabled, the MassTransit server can be administered from both Macintosh and Windows machines. Remote administration must be enabled for both MySQL and the MassTransit Engine.

The easiest way to configure remote administration for MySQL is to check the checkbox when you install MassTransit 6.0. If you already have MassTransit installed and want to enable Remote Administration, use the following instructions. Both MassTransit and MySQL will need to be configured before remote connections will be accepted.

If remote administration was already configured in MassTransit 5 and you properly imported your databases, you should not need to make any changes to enable remote administration in MassTransit 6.

## Configuring Remote Administration in MassTransit

1. Via the MassTransit Administrator connect to the local server.
2. Select the **Setup** button on the toolbar.
3. Select the **Special** tab.

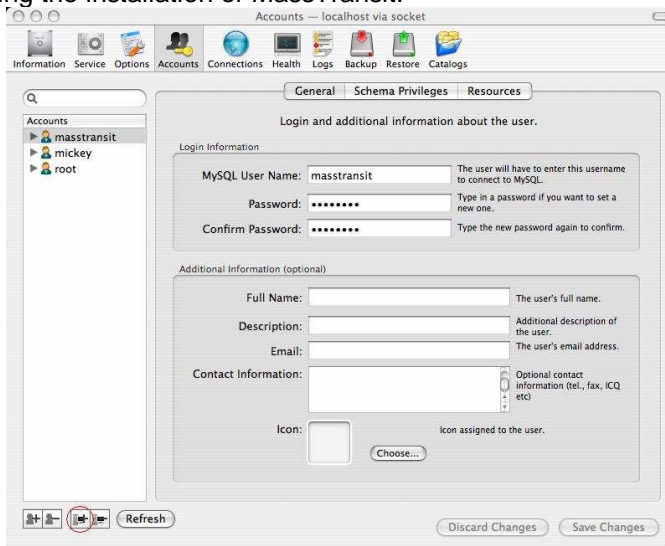


4. Click the **Set Remote Administrator Password...** button.
5. The “Enter Password” dialog appears; enter your password. This password will have to be entered by a Remote Administrator when it attempts to connect to your server.
6. Select the **OK** button and now any Remote Administrators with the password can connect to your server.

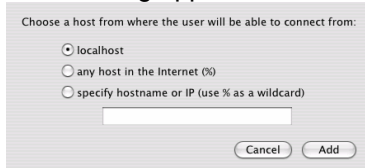
## Configuring Remote Administration in MySQL

**Note:** This is unnecessary if you selected the **Enable Remote login for this account** checkbox during installation.

1. Launch the MySQL Administrator.
2. Go to the Accounts tab.
3. To the left of General tab, expand and highlight the “masstransit” account. This account may have a different name depending on the username you entered on the “MySQL Settings” dialog during the installation of MassTransit.

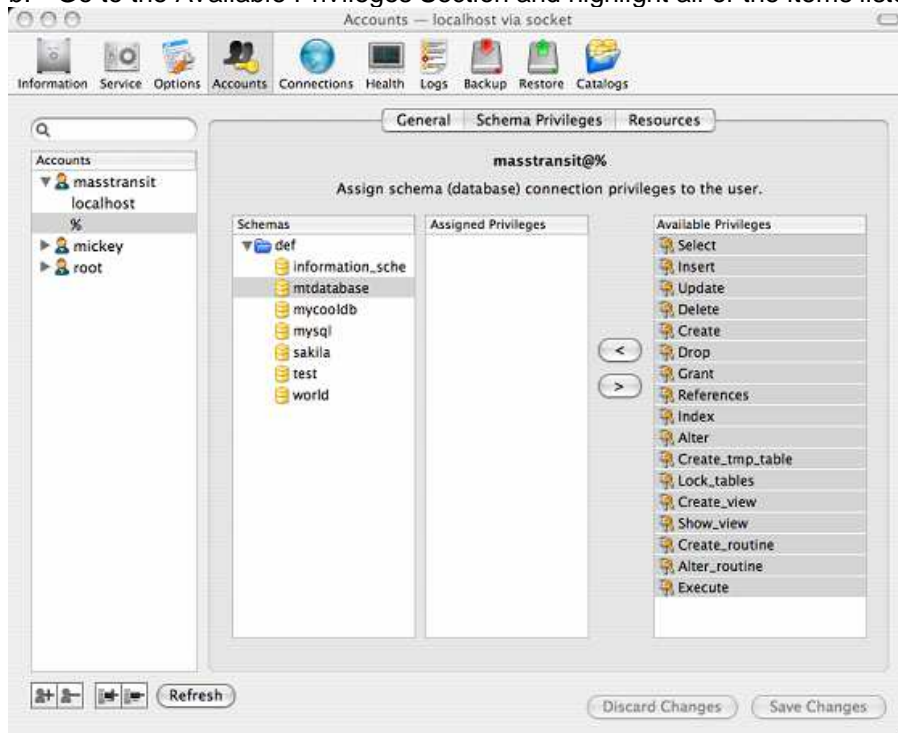


- a. Select the Add a host...button to add a host to the masstransit account. This is the third button from the left below the Accounts listing.
- b. A dialog appears with three options:



- i. **localhost** – only the local machine (this won’t help you for remote administration).
  - ii. **any host in the Internet (%)** - this will allow any machine to connect to the database.
  - iii. **specify hostname or IP (use % as a wildcard)** – this allows you to specify a specific hostname or IP address from which remote administration will be allowed. This is more secure than “any host”, but you will need to add a host for every machine from which you wish to administer the MassTransit server.
  - iv. Select **Add** to continue.
- c. The password on the General tab auto-populates the MySQLpassword used when you installed MassTransit. Remote administrators will not need to know this password to connect.
  - d. Select the **Save Changes** button.

4. Verify the host you just created in the Accounts section is highlighted and select the Schema Privileges Tab.
  - a. In the Schemas section, highlight mtdatabase.
  - b. Go to the Available Privileges Section and highlight all of the items listed.



- c. Click the < button so all of the Available Privileges become Assigned Privileges.
  - d. Select the **Save Changes** button.
5. Go to the Resources tab.
  - a. In the Max. Questions: field enter the number of queries the user can execute within one hour. “Unlimited” is the default when the MassTransit installer creates this account.
  - b. Select the **Save Changes** button.

Now that you have configured both MySQL and MassTransit, Remote Administration is enabled.

## Troubleshooting

**Problem:** A dialog appears stating, “An error occurred with MassTransit: Remote Administration is disabled because the required password has not been configured.”

**Solution:** Remote Administration is not enabled in MassTransit; follow [Steps 1-6](#) to configure it.

**Problem:** A dialog appears stating, “An error occurred with MassTransit: Failed to connect to server due to problems initializing – most likely a database issue.”

**Solution:** Remote Administration is not enabled in MySQL; follow [Steps 1-5](#) to configure it.

## Other MassTransit 6.0 Resources

Go to <http://www.grouplogic.com/files/mt/60/OtherMassTransit60Resources.html> for additional articles to help you set up, configure, and use MassTransit 6.0 and its new features. The [Group Logic Knowledge Base](#) contains many articles that provide detailed information on MassTransit 6.0 and its features and components. The HTML version of this file, “OtherMassTransit60Resources.html”, is provided with your MassTransit 6.0 CD or with your download package.

## Group Logic MassTransit Technical Support

Please contact Group Logic Technical Support if you need assistance with upgrading MassTransit. Email [support@grouplogic.com](mailto:support@grouplogic.com) or call 703-527-7979. For a complete listing of the latest official release versions and documentation, go to <http://www.grouplogic.com/files/glidownload/mtreleases.cfm> .