

# MassTransit 6.1.1 Server Installation Guide for Windows

**GroupLogic**

November 24, 2009

Group Logic, Inc.  
1100 North Glebe Road, Suite 800  
Arlington, VA 22201  
Phone: 703-528-1555 Fax: 703-528-3296  
E-mail: [info@grouplogic.com](mailto:info@grouplogic.com)  
Web: <http://www.grouplogic.com>

<b>Using This Document</b>	<b><u>3</u></b>
<b>BEFORE YOU BEGIN</b>	<b>3</b>
<b>SYSTEM REQUIREMENTS</b>	<b>3</b>
<b>Install MySQL 5</b>	<b><u>4</u></b>
<b>INSTALLING MYSQL</b>	<b>4</b>
<b>SECURITY CONFIGURATIONS FOR MYSQL</b>	<b>5</b>
<b>INSTALLING MYSQL GUI TOOLS</b>	<b>5</b>
<b>Install MassTransit</b>	<b><u>6</u></b>
<b>RUNNING THE MASSTRANSIT INSTALLER</b>	<b>6</b>
<b>TROUBLESHOOTING</b>	<b>9</b>
<b>LAUNCHING THE MASSTRANSIT ENGINE</b>	<b>9</b>
<b>SHUTTING DOWN THE MASSTRANSIT ENGINE</b>	<b>9</b>
<b>LAUNCHING THE MASSTRANSIT ADMINISTRATOR</b>	<b>9</b>
<b>SHUTTING DOWN THE MASSTRANSIT ADMINISTRATOR</b>	<b>111</b>
<b>TROUBLESHOOTING</b>	<b>11</b>
<b>Configuring Remote Administration of MassTransit</b>	<b><u>12</u></b>
<b>CONFIGURING REMOTE ADMINISTRATION IN MASSTRANSIT</b>	<b>12</b>
<b>CONFIGURING REMOTE ADMINISTRATION IN MYSQL</b>	<b>12</b>
<b>TROUBLESHOOTING</b>	<b>14</b>
<b>Web Configuration for Standard and Premier Servers</b>	<b><u>15</u></b>
<b>Other MassTransit 6.1.1 Resources</b>	<b><u>15</u></b>
<b>Group Logic MassTransit Technical Support</b>	<b><u>15</u></b>

## Using This Document

### Before You Begin

To install MassTransit 6.1.1 on Windows 2003 or Windows 2008 you will need to have a version 6 serial number.

This serial number is provided with your MassTransit download package. Please contact Group Logic Support at 703-527-7979 or [support@grouplogic.com](mailto:support@grouplogic.com) if you need to obtain the serial number.

Note that if you already have MassTransit installed, you should use the MassTransit 6.1.1 upgrading document, not this document, which assumes you are doing a fresh MassTransit installation.

You should be logged in as an administrator to install MySQL and MassTransit 6.1.1.

### System Requirements

For a complete listing of all system requirements, please see the MassTransit ReadMe. We strongly recommend that you contact the Group Logic MassTransit team to consult with them prior to purchasing or upgrading a system to run MassTransit. Using their expertise in this area, the team can evaluate with you your specific needs and determine the optimal system configuration for use with MassTransit under those conditions. Group Logic has discontinued support for Windows 2000.

## Install MySQL 5

Prior to installing MassTransit, you will need to install MySQL 5.0.78; this is also provided in your MassTransit 6.1.1 download package. MassTransit is dependent upon MySQL, so if it is not running, then MassTransit cannot be installed. MassTransit 6.1.1 requires MySQL 5.0.

**NOTE:** If you have an earlier version of MySQL already installed, you must uninstall the old MySQL service and then restart MySQL after you have successfully upgraded to MySQL 5.0.78 to complete the installation. For additional information, go to <http://dev.mysql.com/doc/refman/5.0/en/upgrade.html>.

## Installing MySQL

Follow the below instructions to install and launch MySQL.

1. Unzip the MySQL installation files, mysql-classic-5.0.78-win32.zip, located in your download package. A directory opens containing the required installer, Setup.exe.
2. To install the MySQL engine, double click Setup.exe.
3. An introduction window appears. Select the **Next** button to proceed.
4. The “License Agreement” window appears. The **Next** button is enabled after you select **I accept the terms in the license agreement**. Read the license and select **Next** to continue or select **Cancel** to cancel the installation.
5. The “Setup Type” window appears. Select the **Typical** setup type and then select the **Next** button.
6. The “Ready to Install the Program” window appears next. Once you have verified that all of the settings are accurate, select the **Install** button.
7. While the installation completes, the “Installing MySQL Server 5.0” window appears.
8. Two “MySQL Enterprise Subscription” windows appear next. On both windows you may select **More** for more information or **Next** to continue.
9. The “Wizard Completed” window appears next. Check the **Configure the MySQL Server now** check box to configure your server. Select the **Finish** button to proceed.
10. The “MySQL Server Instance Configuration Wizard” then launches; select **Next** to continue.
11. The next window asks you to select a configuration type. Select the **Standard Configuration** and then select **Next** to continue.
12. The next window asks you to set the Windows options:
  - a. Check the checkbox for **Install As Windows Service**.
  - b. Select MySQL for the **Service Name**.
  - c. Check the checkbox for **Launch the MySQL Server automatically**.
  - d. Check the checkbox for **Include Bin Directory in Windows PATH**.
  - e. Select **Next**.
13. The next window asks you to set the Security options:
  - a. Select the **Modify Security Settings** checkbox to set a password for your root account. You should use a strong root password of 8 or more characters with a variety of letters, numbers, and symbols.
    - i. Enter the root password.
    - ii. Retype the password for verification.
    - iii. Select the **Enable root access from remote machines** checkbox if you would like to give remote machines root access to MySQL. This is not recommended.
  - b. Uncheck the **Create An Anonymous Account** checkbox.
  - c. Select **Next** to continue.
14. The “Ready to execute...” window appears next. Select the **Execute** button to start the configuration.
15. Once the configuration is complete select the **Finish** button.
16. Go to the folder where you installed MySQL (by default, C:\Program Files\MySQL\MySQL Server 5.0). Open the my.ini file in a text editor.

**NOTE:** On 64-bit machines, the default location of MySQL is C:\Program Files (x86)\MySQL\MySQL Server 5.0.

17. Add the following line to the end of the file:  
temp-pool=0
18. Save and close my.ini.
19. In the services control panel, restart the MySQL service.

## Security Configurations for MySQL

It is critical that the directory where the MySQL database files are stored (c:\Program Files\MySQL\MySQL Server 5.0\data by default) and the Windows temp directory (c:\tmp) be excluded from virus scan and server backups. Both virus scan tools and backup tools can lock key files in these folders and interrupt operation of the MySQL server, and by extension, MassTransit.

**NOTE:** On 64-bit machines, the default location of MySQL is C:\Program Files (x86)\MySQL\MySQL Server 5.0.

To backup the MySQL databases, it is recommended that you use the MySQL or other standard tools to automatically save the backup files to a directory or volume that can then be processed by your backup or archiving solution.

By default, MySQL uses TCP/IP port 3306 to accept client communications. It is recommended to restrict traffic on this port by setting appropriate firewall rules. Normally, the only remote computers that should be allowed to access MySQL on the MassTransit server are those running the MassTransit Administrator (or those running the MassTransit Engine or MTWeb in the rare configurations where MySQL is not running on the same server as MassTransit).

## Installing MySQL GUI Tools

Below are instructions for installing the MySQL GUI tools. Two of the most commonly used tools for administering and troubleshooting the MassTransit server are the MySQL Administrator and the MySQL Query Browser.

If you are upgrading from MySQL 4 to MySQL 5, you will need to install the updated versions of the MySQL Administrator and MySQL Query Browser. The tools are available in the mysql-gui-tools-com-5.0-r12-win32.zip in the MySQL folder of your MassTransit download package.

### To install the MySQL GUI Tools

1. Double-click mysql-gui-tools-com-5.0-r12-win32.msi.
2. An introduction window appears. Select the **Next** button to proceed.
3. The "License Agreement" window appears. The **Next** button is enabled after you select **I accept the terms in the license agreement**. Read the license and select **Next** to continue or select **Cancel** to cancel the installation.
4. The "Destination Folder" window appears. Select the **Change** button to install to a different location; select **Next** to continue.
5. The "Setup Type" window appears. Select the **Complete** setup type and then select the **Next** button.
6. The "Ready to Install the Program" window appears next. Once you have verified that all of the settings are accurate, select the **Install** button.
7. Two "MySQL Enterprise Subscription" windows appear next. On both windows you may select **More** for more information or **Next** to continue.
8. The "Wizard Completed" window appears when the installation is complete. Select the **Finish** button to exit.

## Install MassTransit

### Running the MassTransit Installer

1. Verify MySQL 5.0.78 is running as a service. Go to the Services window to verify via Start -> Programs -> Administrative Tools -> Services.

**NOTE:** If MassTransit is running on a remote server, separate from where MySQL is installed you will need to execute the following command on the MySQL command prompt before installing MassTransit :

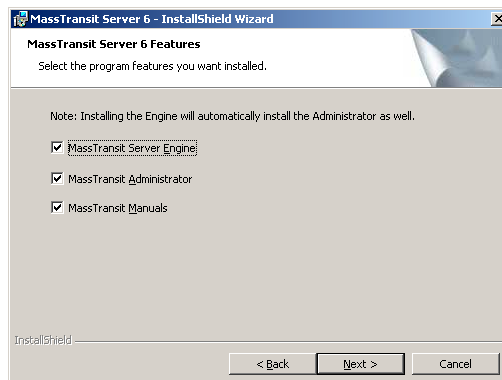
```
GRANT ALL PRIVILEGES ON *.* TO 'root'@'<REMOTE IP ADDRESS>' identified by '<PASSWORD>' WITH GRANT OPTION
```

In the above statement, replace <REMOTE IP ADDRESS> with the MassTransit Server IP Address and replace '<PASSWORD>' with the root MySQL password.

2. Double click InstallMT6Server.exe to launch the InstallShield Wizard.

**NOTE:** you may quit the installation at any time; the **Cancel** button is enabled until the **Install** button is selected.

3. A “Preparing to Install...” window remains open until the installation preparation is complete.
4. When the installation preparation completes, the “Welcome to the InstallShield Wizard for MassTransit Server 6” window appears. Select the **Next** button to continue.
5. The “License Agreement” window appears next. The **Next** button is enabled after you select **I accept the terms in the license agreement**. Once you have read and agreed with the license agreement, select **Next** to continue or select **Cancel** to cancel the installation.
6. The “ReadMe Information” window appears next; read it and select **Next** to continue.
7. The “MassTransit Server 6 Features” window appears next. Select the features that you would like to install.

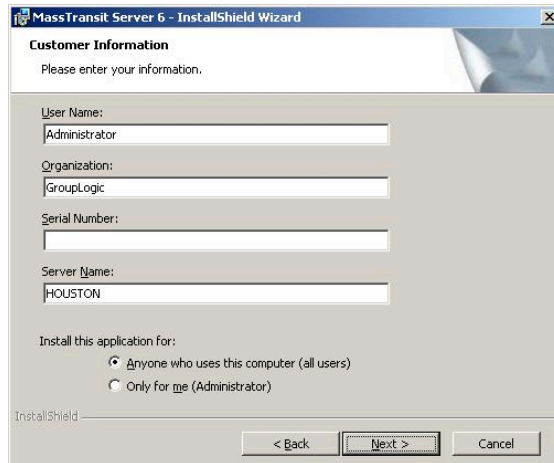


- a. All items are checked by default.
- b. Checking the MassTransit Server Engine option will install both the Engine and the MassTransit Administrator; this is necessary so you can configure the Engine.
- c. Checking just the MassTransit Administrator option will install just the Administrator. MassTransit Premier and Standard allow local and remote Administrators to connect if remote administration is enabled for both MySQL and the MassTransit Engine Additional details can be found below in the [Configuring Remote Administration](#) section.
- d. Checking the MassTransit Manuals option will install manuals and documentation.
- e. Once you have made your selection, select **Next** to continue.

8. The “MySQL Settings” window appears next.



- a. In the MySQL MassTransit Account section, the following information is required:
    - i. Hostname: [default: localhost] Leave this setting configured as “localhost” so MassTransit can access the local database. *Do not use your local IP address.* If MassTransit is on a remote server, enter the IP address of the machine where MySQL is installed.
    - ii. Port: [default: 3306] Leave this setting configured to “3306” unless you have changed the TCP port used by the MySQL database server (this is rare).
    - iii. Username: [default: masstransit] This will be the name of the user account created in MySQL that MassTransit will use to access the database. You may change it to any username you wish. *Do not use root.*
    - iv. Password: This will be the password for the user account created in MySQL that MassTransit will use to access the database. You may change it to any password you wish.
    - v. Confirm Password: Please retype your password for verification.
    - vi. “Enable remote login for this account”: [default: not selected] If you wish to allow administration of the MassTransit server using the MassTransit Administrator from other machines, you will need to check this option. If it is not checked, your MassTransit server will not allow remote administration, although you will be able to administer the server locally. If you wish to allow remote administration, it is recommended that you enable it at this time; if you do not enable it now, you will later have to manually configure the proper permissions for both MassTransit and MySQL. Instructions on how to manually configure this can be found below in the [Configuring Remote Administration](#) section of this document.
  - b. Enter your MySQL root password. The root password is required so that the MassTransit installer can create the new user account in MySQL.
  - c. Select **Next** to continue.
9. Once the installer validates the entered information, a dialog appears stating, “MySQL account configured successfully!” Select **OK** to continue.
10. The “Destination Folder” window appears. The default installation location for 32-bit machines is C:\Program Files\Group Logic\MassTransit Server 6\ and C:\Program Files (x86)\Group Logic\MassTransit Server 6\ for 64-bit machines.
- a. Select the **Change** button to install to a different location.
  - b. Select **Next** to continue.
11. The “Customer Information” window appears next; all fields are mandatory.



- a. Enter your **User Name**.
  - b. Enter the name of your **Organization**.
  - c. Enter the **Serial Number** provided to you by Group Logic.
  - d. Enter the **Server Name**; it auto-populates so verify that it is correct.
  - e. Select whom the application should be installed for: anyone using this computer or only you. The default is **Anyone who uses this computer (all users)**.
  - f. Select **Next** to continue.
12. The “Ready to Install the Program” window appears next. If you would like to make any changes to your installation, do so now. Once you have verified that all of the settings are accurate, select the **Install** button.
  13. A dialog will appear asking, “Would you like to install Dongle Drivers?” Select **Yes**.
  14. A dialog appears stating that the dongle must be removed prior to the installation. If you have a MassTransit hardware dongle plugged in, remove it now. Once the dongle has been unplugged select **OK** to continue. You will be prompted later to plug the dongle back in.
  15. A dialog appears stating that the Sentinel Protection installer is being configured. This installs the drivers for the dongle.
  16. Once the Sentinel Protection Installer is complete, a dialog will prompt you to plug the dongle in. If you have one, plug it in and select **OK** to continue. Otherwise, just click **OK**.
  17. When the installation is complete, the “InstallShield Wizard Completed” window appears. Select **Finish**.
  18. If you have an mtdongle.cfg file that you received from Group Logic, copy it into the MassTransit installation directory. This file contains your license information.

**If you are installing MassTransit on Windows Server 2008 or Windows Server 2008 R2, you now need to follow the next steps for adding a Windows Firewall exception. Otherwise, skip to the next section.**

19. Open the Control Panel and click on the Windows Firewall option.
20. In the window that appears, click on the “Allow a program through Windows Firewall” link (“Allow a program or feature through Windows Firewall” on Windows 2008 R2).
21. Click on the “Add program...” button (“Allow another program...” on Windows 2008 R2).
22. Browse the “**MassTransit Engine.exe**” in the MassTransit installation folder and select it. Click **OK** to confirm.
23. **On Windows Server 2008 R2**, you can choose the networks the Firewall exception will be valid for (Domain, Private, or Public networks). Enable the exception only for the networks you want to use MassTransit on.

## Troubleshooting

**Problem:** I did not get a dialog stating “MySQL account configured successfully!” while installing MassTransit.

**Solution:**

1. Is the MySQL service running? Go to the Services window to check via Start -> Programs -> Administrative Tools -> Services.
2. Did you enter the correct MySQL password?
3. Did you incorrectly leave the MySQL Root password field blank?
4. If MySQL is on a separate server, did you follow the directions for remote server install in step 1?

## Launching the MassTransit Engine

1. The MassTransit Engine must be started via the Services window. To access the Services window, go to Start -> Programs -> Administrative Tools -> Services.
2. Once the Services window is open, highlight the service named “MassTransit” and select the **Start Service** button.
3. The default startup type for the MassTransit service is Automatic, thus anytime your machine reboots, the MassTransit service automatically starts.

**NOTE:** MassTransit is dependent upon MySQL 5 and will fail if MySQL is not started. Make sure MySQL is set to start automatically. If you find that MassTransit is attempting to start before MySQL is ready, you can modify the options in the Recovery tab of the MassTransit service to have it retry.

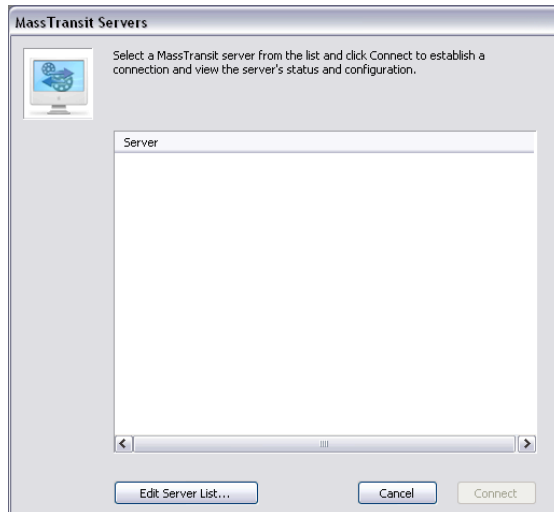
4. If you would like the MassTransit Engine service to access network volumes, do the following:
  - a. Go to the Services window via Start -> Programs -> Administrative Tools -> Services. Highlight the MassTransit service, right click, and select **Properties** to open the "Properties" window.
  - b. Go to the Log On tab and select the **This account:** option.
    - i. Select the **Browse...** button to browse for your valid domain user that has access to the volumes needed.
    - ii. Enter and confirm your password.
    - iii. Select **OK** to finish and close the "Properties" window.

## Shutting Down the MassTransit Engine

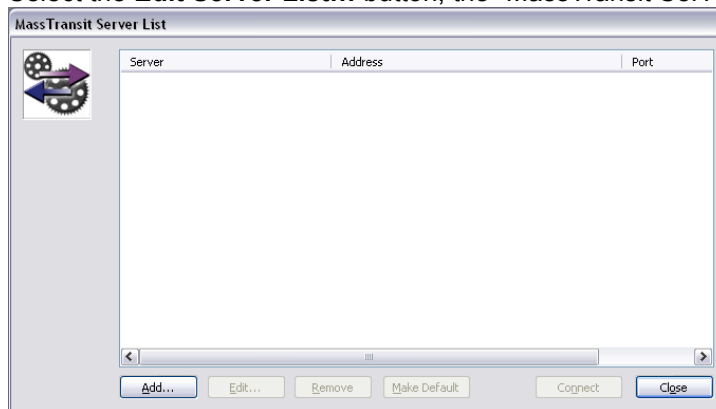
To shut down the MassTransit Engine, open the Services window, select the MassTransit service, and select the **Stop Service** button.

## Launching the MassTransit Administrator

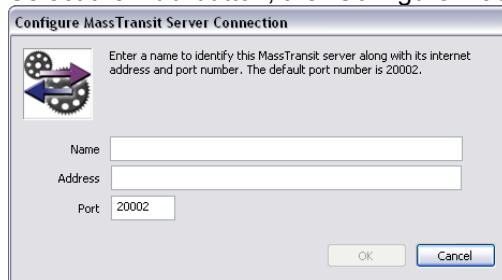
1. Double click the MassTransit Administrator.exe located in the root MassTransit folder to connect to your MassTransit server; the default location for 32-bit computers is C:\Program Files\Group Logic\MassTransit Server 6 and C:\Program Files (x86)\Group Logic\MassTransit Server 6 for 64-bit computers.
2. The “MassTransit Servers” window appears.



3. Add the server you wish to connect to:
  - a. Select the **Edit Server List...** button; the “MassTransit Server List” appears.



- b. Select the **Add** button; the “Configure MassTransit Server Connection” dialog appears.



- c. Add the name and address of the server you are connecting to; all fields are required. If Remote Administration is enabled and you are connecting to a remote server, enter that machine's information; see the [Remote Administration](#) section of this document for additional information.
          - i. Enter the server **Name** (or localhost if you are connecting locally); this is just a name to identify the server you're connecting to.
          - ii. Enter the server IP **Address** (or localhost if you are connecting locally).
          - iii. Enter the **Port**. Use 20002 (the default) unless the MassTransit server has been configured to use a different port.
        - d. Select **OK** to continue.
4. After selecting **OK** you return to the “MassTransit Server List” window and see the server you just created.
5. To connect, highlight the server entry and select **Connect**.

**NOTE:** You will be able to connect to the server only when the Engine is running; otherwise, a dialog will appear stating that a connection cannot be made to the server.

6. The “MassTransit” window appears with a toolbar of the following buttons: **Contacts**, **Status**, **Files**, **Log**, and **Setup**. Click any button to go to the corresponding window.

**HINT:** If you always want the MassTransit Administrator to connect to the same server, go to **Edit Server List...** and highlight that server in the list. Then click the **Make Default** button and click **Close**. Now when you launch the MassTransit Administrator, it will automatically connect to the default server.

## Shutting Down the MassTransit Administrator

To disconnect from the server only, go to the **File** menu and select **Disconnect From Server**. To exit the MassTransit Administrator, go the **File** menu and select **Exit**.

## Troubleshooting

**Problem:** The MassTransit Engine shut down immediately upon launch.

**Solution:** Look for an error log entry on the Application page of the Event Viewer. To open the Event Viewer, go to Start -> Programs -> Administrative Tools -> Event Viewer. Look for an Error type and the source name should have “MassTransit” in it. Select the error and double click it. When the event opens, look at the description; the last few sentences of the description are frequently the most informative. Make sure you have MySQL 5 installed. MassTransit 6.1.1 will not run if MySQL 4 is installed. Verify from the Services window that MySQL is running.

**Problem:** The MassTransit Administrator shut down immediately upon launch.

**Solution:**

1. Verify the Engine is running. When the Engine is not running a dialog appears stating, “An error occurred with MassTransit: Unable to connect to the MassTransit server.”
2. Look for an error log entry on the Application page of the Event Viewer. To open the Event Viewer, go to Start -> Programs -> Administrative Tools -> Event Viewer. Look for an Error type and the source name should have “MassTransit” in it. Select the error and double click it. When the event opens, look at the description; the last few sentences of the description are frequently the most informative.

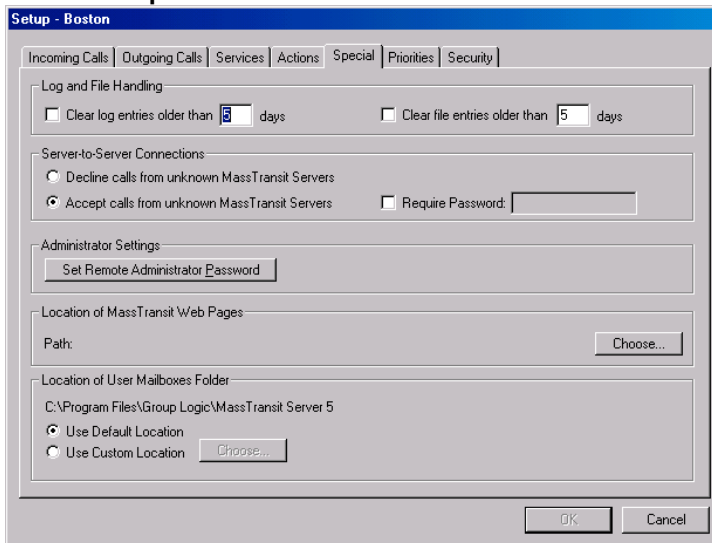
## Configuring Remote Administration of MassTransit

The file transfer engine runs as a service and can be accessed for viewing and administration by a separate application, the MassTransit Administrator. MassTransit Premier and Standard allow local and remote Administrators to connect if remote administration is enabled for both MySQL and the MassTransit Engine.

The easiest way to configure remote administration for MySQL is to check the checkbox when you install MassTransit 6.1.1. If you already have MassTransit installed and want to enable Remote Administration, use the following instructions. Both MassTransit and MySQL will need to be configured before remote connections will be accepted.

### Configuring Remote Administration in MassTransit

1. Via the MassTransit Administrator connect to the local server.
2. Select the **Setup** button on the toolbar.
3. Select the **Special** tab.

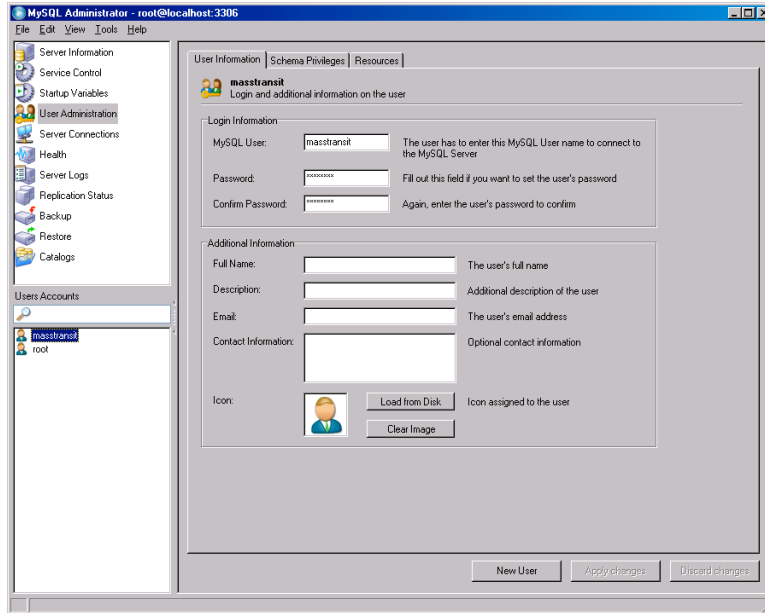


4. Click the **Set Remote Administrator Password...** button.
5. The Enter Password dialog appears; enter your password. This password will have to be entered by a Remote Administrator when it attempts to connect to your server.
6. Select the **OK** button and now any Remote Administrators with the password can connect to your server.

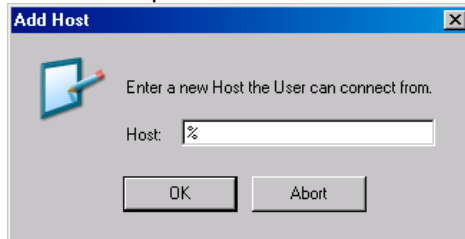
### Configuring Remote Administration in MySQL

**NOTE:** This is unnecessary if you selected the **Enable remote login for this account** checkbox during installation.

1. Launch the MySQL Administrator.
2. Select the User Administration page.
  - a. Under User Accounts select the “masstransit” account. This account may have a different name depending on the username you entered on the “MySQL Settings” dialog during the installation of MassTransit.



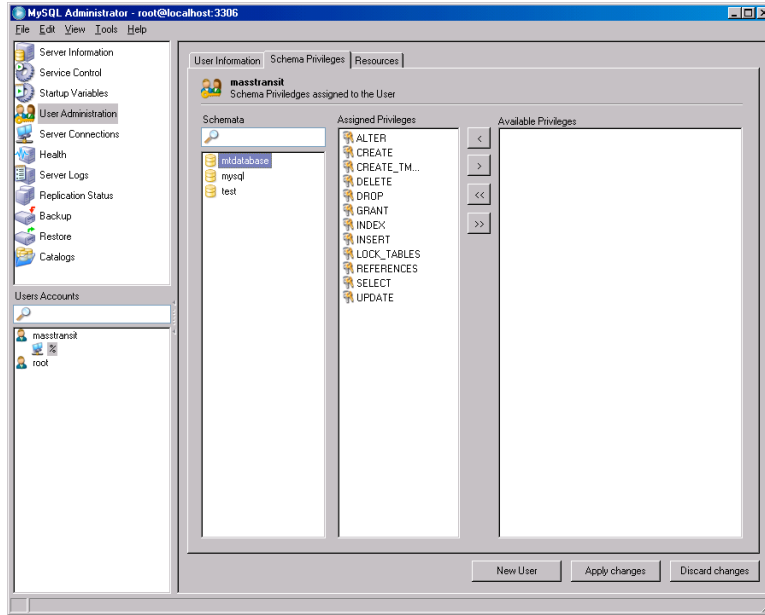
- b. While focus is on “masstransit” right click and select “Add host from which the user can connect”.
- c. The “Add Host” dialog appears; enter the name of the new host, and select **OK** to continue. Using “%” will allow any machine to connect to the database. For security purposes, it is better to specify a specific host IP if only a limited number of hosts will need to perform remote administration.



- d. The new host populates below the masstransit account.
- e. The password on the General tab auto-populates the MySQLpassword used when you installed MassTransit. Remote administrators will not need to know this password to connect.

**NOTE:** Do NOT select the **Apply Changes** button until this host is completely configured.

3. Verify the host you just created in the Users Accounts section is highlighted and select the Schema Privileges Tab.
  - a. In the Schemas section, highlight mtdatabase.
  - b. Go to the Available Privileges Section and highlight all of the items listed.
  - c. Click the < button so all of the Available Privileges become Assigned Privileges.



**NOTE:** Do NOT select the **Apply Changes** button until this host is completely configured.

4. Go to the Resources tab.
  - a. Configure the values in the Limiting user resources section. The default is “0”; “Unlimited” is the default when the MassTransit installer creates this account.
  - b. Select the **Apply Changes** button.

**NOTE:** When you select the **Apply Changes** button, it looks like the host you just created has disappeared. It has not disappeared; it is just no longer visible from the MySQL Administrator.

Now that you have configured both MySQL and MassTransit, Remote Administration is enabled.

## Troubleshooting

**Problem:** A dialog appears stating, “An error occurred with MassTransit: Remote Administration is disabled because the required password has not been configured.”

**Solution:** Remote Administration is not enabled in MassTransit; follow Steps 1-6 to configure it.

**Problem:** A dialog appears stating, “An error occurred with MassTransit: Failed to connect to server due to problems initializing – most likely a database issue.”

**Solution:** Remote Administration is not enabled in MySQL; follow Steps 1-4 to configure it.

## Web Configuration for Standard and Premier Servers

For information about configuring MassTransit for use with web servers, see the Web Configuration Instructions document located on the MassTransit Latest Releases web page in the MassTransit 6.1.1 Documentation section at <http://support.grouplogic.com/mtlatest>.

## Other MassTransit 6.1.1 Resources

Go to <http://support.grouplogic.com/mtlatest> for additional articles to help you set up, configure, and use MassTransit 6.1.1 and its new features. The [Group Logic Knowledge Base](#) contains many articles that provide detailed information on MassTransit 6.1.1 and its features and components.

## Group Logic MassTransit Technical Support

Please contact Group Logic Technical Support if you need assistance with installing MassTransit. Email [support@grouplogic.com](mailto:support@grouplogic.com) or call 703-527-7979. For a complete listing of the latest official release versions and documentation, go to <http://support.grouplogic.com/mtlatest>.