

ExtremeZ-IP Filename Policies

Presented by:

Geordie Korper | March 5, 2008

What is ExtremeZ-IP?

File & Print server software

- » Connects Macs to Windows servers
- » Replaces Microsoft Services for Macintosh (SFM)
- » Allows Macs to use Active Directory accounts and Kerberos single sign-on
- » Only Windows server solution to fully support the Mac OS X client

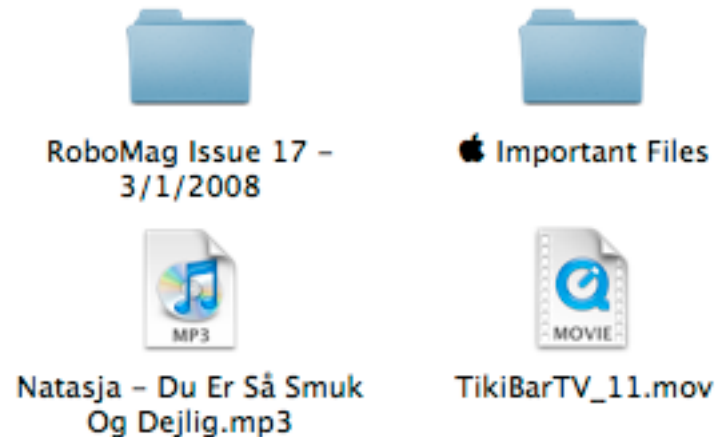
What are Filename Policies?

Filename policies allow you to decide what characters and extensions are allowed on files copied to the server.

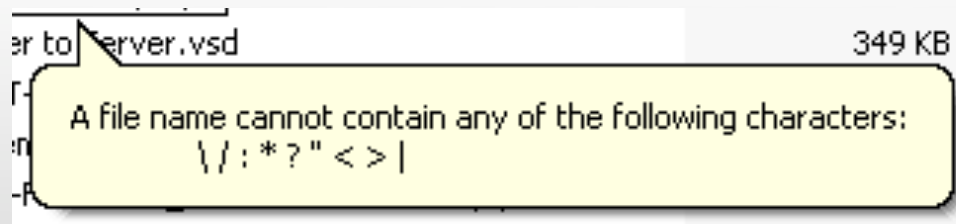
- » Prevent downtime due to broken cross-platform workflows
- » Save on expensive storage space by preventing non-business content from filling up the server
- » Help you avoid help desk calls by giving the user the ability to resolve the problem on their own
- » Will not modify existing files

Example File Names

- » Mac file names can be almost any Unicode character



- » Windows NTFS support Unicode, but many applications don't, including Windows Explorer



Setting Filename Policies

Settings

File Server | Print Server | Security | Search | **Filename Policy** | Service Discovery

Enforce Filename Policy

Apply policy to all volumes

Limit error messages to clients to one every seconds

Log failures to Windows Event Log every minutes

Custom error message to client:

Do not allow:

Characters illegal in Windows file or folder names

Characters that will not display in Windows Explorer

Specific characters:

File or folder names longer than characters

Extension:

Add... Remove...

mov
mp4
mp3


Help Refresh Registry OK Cancel Apply

Setting Filename Policies

Settings

File Server | Print Server | Security | Search | **Filename Policy** | Service Discovery

Enforce Filename Policy

 Apply policy to all volumes

Limit error messages to clients to one every seconds

Log failures to Windows Event Log every minutes

Custom error message to client:

Do not allow:

Characters illegal in Windows file or folder names

Characters that will not display in Windows Explorer

Specific characters:

File or folder names longer than characters

Extension:

Add... Remove...

mov
mp4
mp3

Help Refresh Registry OK Cancel Apply

Setting Filename Policies

Settings

File Server | Print Server | Security | Search | **Filename Policy** | Service Discovery

Enforce Filename Policy

Apply policy to all volumes

Limit error messages to clients to one every seconds

Log failures to Windows Event Log every minutes

Custom error message to client:

Do not allow:

Characters illegal in Windows file or folder names

Characters that will not display in Windows Explorer

Specific characters:

File or folder names longer than characters

Extension:

Add... Remove...

mov
mp4
mp3

Help Refresh Registry OK Cancel Apply

Setting Filename Policies

Settings

File Server | Print Server | Security | Search | **Filename Policy** | Service Discovery

Enforce Filename Policy

Apply policy to all volumes

Limit error messages to clients to one every seconds

Log failures to Windows Event Log every minutes

Custom error message to client:

Do not allow:

Characters illegal in Windows file or folder names

Characters that will not display in Windows Explorer

Specific characters:

File or folder names longer than characters

Extension:

Add... Remove...

mov
mp4
mp3

Help Refresh Registry OK Cancel Apply

Setting Filename Policies

Settings

File Server | Print Server | Security | Search | **Filename Policy** | Service Discovery

Enforce Filename Policy

Apply policy to all volumes

Limit error messages to clients to one every seconds

Log failures to Windows Event Log every minutes

Custom error message to client:

Do not allow:

Characters illegal in Windows file or folder names

Characters that will not display in Windows Explorer

Specific characters:

File or folder names longer than characters

Extension:

Add... Remove...

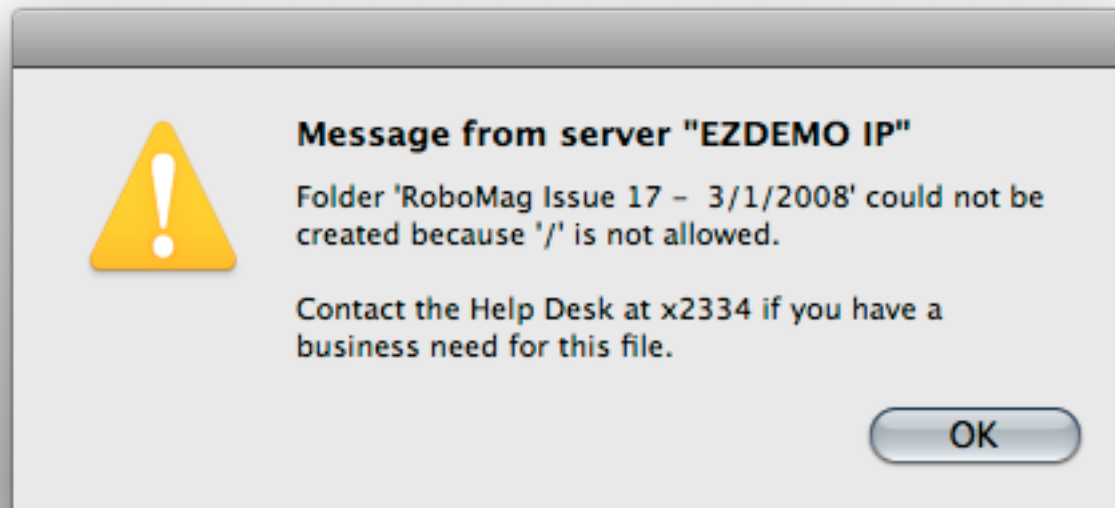
mov
mp4
mp3

Help Refresh Registry OK Cancel Apply

Types of Policies

Available Filename Policies

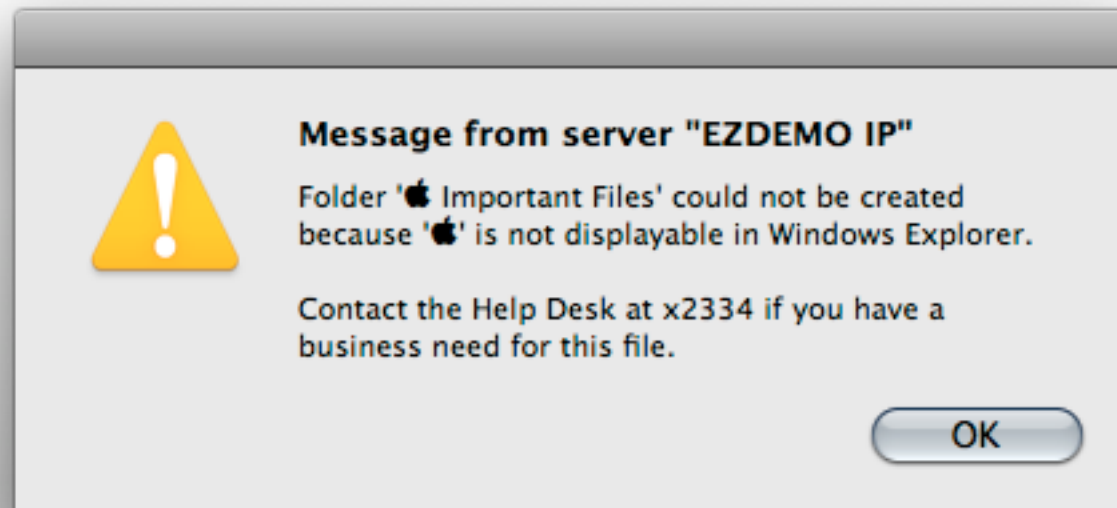
- » Characters illegal in Windows file names
- » Custom character(s) such as spaces



Types of Policies

Available Filename Policies

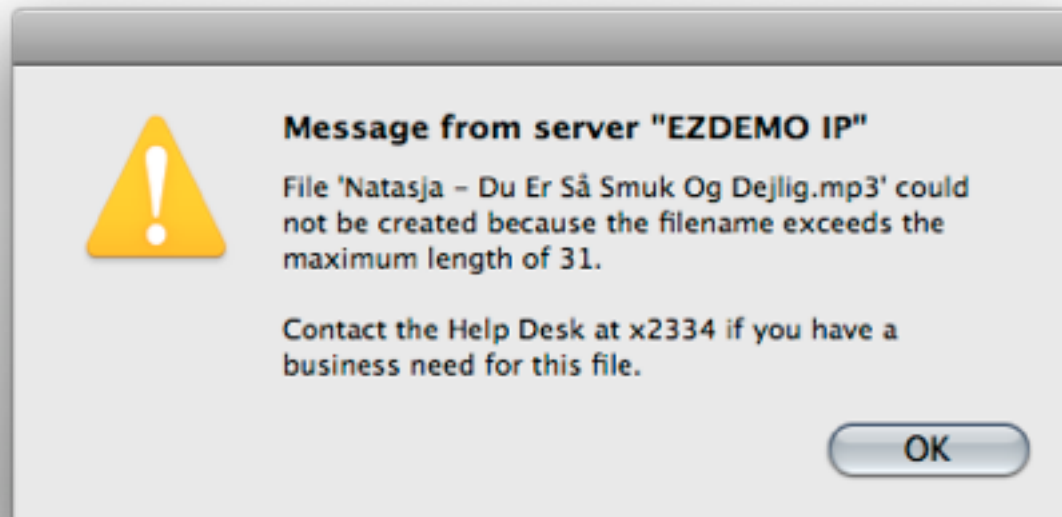
- » Characters illegal in Windows file names
- » Custom character(s) such as spaces
- » Characters that do not exist in Windows Explorer font



Types of Policies

Available Filename Policies

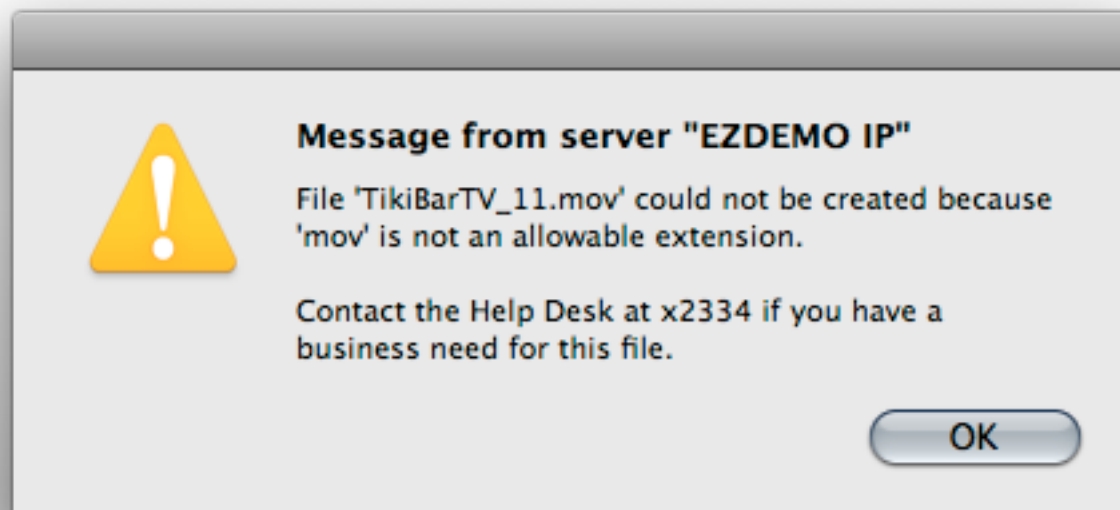
- » Characters illegal in Windows file names
- » Custom character(s) such as spaces
- » Characters that do not exist in Windows Explorer font
- » Filenames over a certain length



Types of Policies

Available Filename Policies

- » Characters illegal in Windows file names
- » Custom character(s) such as spaces
- » Characters that do not exist in Windows Explorer font
- » Filenames over a certain length
- » Extensions such as .mp3 or .avi



Demonstration

Demo of copying files to a volume with filename policies that:

Do not allow:

- Characters illegal in Windows file or folder names
- Characters that will not display in Windows Explorer

Specific characters:

- File or folder names longer than characters

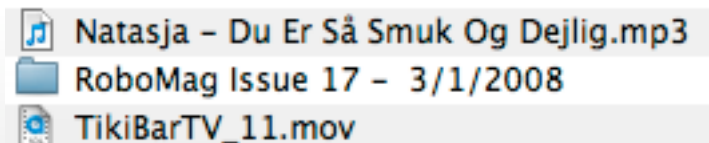
Extension:

Add...

Remove...

mov
mp4
mp3

Example folder with 3/1/2008 in the name





Macintosh HD







ExtremeZ-IP Share



Filename Policy

Work Folder

4 items, 15.59 GB available

 RoboMag Issue 17 - 3/1/2008	 Important Files
 Natasja - Du Er Så Smuk Og Dejlig.mp3	 TikiBarTV_11.mov



Compatibility Without Compromise

You control what files are allowed on the server and avoid help desk calls by giving the user the ability to resolve the problem on their own

- » Character based filename polices prevent downtime due to broken cross-platform workflows
 - Characters illegal in Windows file names
 - Characters that do not exist in Windows Explorer font
 - Custom character(s) such as spaces
 - Filenames over a certain length

- » Extension based filename policies save on expensive storage space by preventing non-business content from filling up the server
 - Extensions such as .mp3 or .avi

Want to Know More?

<http://www.grouplogic.com/products/extreme/FeaturesBenefits.cfm>